

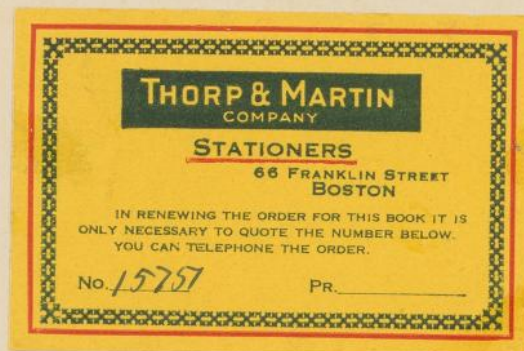
KG

11366
133

BOND 1

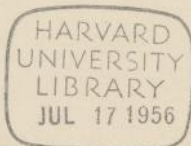
C.H. Payne

KG 11366.133



Measures by Bond Astronomical
Club under C. H. Payne

KG 11366.133



October 17, 1928

032916 RT Eridani

MBS and CHP

Marked on A 4014 (No. 240)

Sequence selected.

October 29, 1928

Observer

Plate	J.D.	Est. b-c	Remarks	MBS
AC 23244	22698	a-s		"
23305	22709	—	plate too poor	"
23346	22716	a-b		"
23443	22736	a-b		"
24039	22931	—	plate too poor	"
24070	22950	—	plate too poor	"
24195	22968	n-s	f barely seen, g n.s.	"
24267	22983	n s	a seen b not seen	CHP
24299	22988	n.s.	d seen, e not seen	MBS
24376	23004	n s.	d seen, e not seen	CHP
24444	23031	n. s.	g seen, h just seen	"
24527	23052		g suspected variable suspected	"
AM 16052	23291	n. s.	f seen, g suspected	"
" 16093	23327	n-s n.s.	k seen	"
" 16127	23353	v. n.s.	l seen	
" 16151	23402	v. n.s.	d seen	
AX 284	23719	v. n.s.	a not seen	
AC 25424	23725	k-l	k-	
AM 16491	23776	v=k?	bad plate, trails	
AC 25425	23725	v=l		
AX 333	23752		plate too poor	
AX 346	23757	v=d?	poor plate	

Is k variable?

	Plate	J.D	Est	Remarks	Re-est	Observer
AX	352	23761	e - f			C.H.P.
AC	25497	23768	$v \equiv e$ ^h MBS CMP			
AC	25498	23768	k - l ^{EHP} $h - l$ MBS		k - l	
AC	25520	23778	= c	plate fogged		MBS
AC	25521	23778	m.s.	b seen, c ns	[d	↓
AX	382	23780	= e		= d	
AC	25534	23782	= h			
AC	25535	23782	[h	k not seen		
AM	16231	23788				
AM	16554	23795	m.s.	c barely seen		
	16579	23801	c - d			
	16605	23819	= b			
AX	818	24047	= $\frac{n}{n-d}$	good plate m barely seen		
	880	24082	$\frac{n-d}{L\sigma}$	good plate		
	909	24089	= $\frac{n}{n-d}$	" "		
	928	24118	$\frac{n-d}{L\sigma}$			
	948	24138	-	plate no good		
	1348	24415	$\frac{n-d}{L\sigma}$	l ns., so barely		
AM	16676	24139	e - f			
AX	1400	24491	$\frac{n-d}{L\sigma}$			
	1423	24498	d - e			
	1489	24528	f - g	scratches		
	1501	24533	e - f			CMP
	1534	24554	a - b			↓
	1865	24759	[σ			
	1872	24761	[[σ	excellent		
	1910	24772	[[σ, ρ	"		
	1958	24801	[σ			
	2026	25158	[[[σ, ρ			
	2051	25183	= ρ			

Plate	J.D.	Est.	Remarks	Observer
AY 1814	25189	Susp.	g seen	CMP
AX 2067	25201	= q		
2101	25230	= σ		
<hr/>				
			Est.	ETK
Am 16091	23326		Plate too poor	↓
Am 16122	23346	n.o.	c seen, d + var. invis.	MBS
Am 16135	23372	n.o.	g barely seen, var. invis.	↓
Am 16158	23404	n.o.	f seen, g + var. invis.	
Am 16384	23663	Est.	m + n seen, var. invis.	
Am 16415	23674	n.o.	c seen, also f, g + var. invis.	
Am 16487	23771	n.o.	e seen, f not, plate poor	
Am 16507	23785		plate too poor	
Am 16535	23792	n.o.	c seen, d not seen	
Am 16558	23797	= h		
Am 16583	23812	b-c		
Am 16616	23820	b-c	m seen, m used	
AX 798	24033	n.o.	m seen, n + var. invis; images trailed	
AX 859	24066	n.o.	d seen, images trailed	
AX 910	24089	n-o	images poor	
Am 16648	24120	n.o.	e but not f seen, no var.	
AX 939	24134	= m	images poor	
Am 16667	24137	n.o.	a but not b seen	
Am 16695	24165		plate too poor	
AX 970	24168	d-e	images poor	
AX 1340	24412	= p	" " (rather)	
AX 1424	24498	f-g	" " (very)	
AX 1436	24503	= k		
AX 1457	24516	f-g		
AX 1479	24525	= h		

4

Plate	F. II.	Est.	Remarks	Observer
AX 1547	24564	= a		MBS
AX 1888	24766	n-o		↓
AX 1924	24787	[o	p not seen	
AX 1933	24790	= n		
AX 1967	24804	= n		
AX 1978	24821	m-n	images poor	
AX 2040	25149	[p		
AX 2074	25202	[o	p invis.	
AX 2106	25234	= o		
B 14529	13443	a-b		
B 20920	14279 ✓	= l		
B 17888	13876	= h		
B 12618	13149 ✓	g-h		
B 22348	14639 ✓	[l		
B 24266	15019 ✓	= b		
25993	15267 ✓	= a x		
29137	15803 ✓	n.s.		
30946	16043 ✓	c-d		
34755	16715 ✓	= a x		
36925	17076 ✓	a-b	near b	
36984	17105 ✓	= b		
38314	17873 ✓	= b		
49394	21219 ✓	a-b	near a	
49396	21219	a-b	near a	
49426	21220	= a	not quite	

p visible on
these plates
when m, n,
are invisible

m invisible, (p visible)

l barely seen

20

Oct. 22, 1928RV Puppis E.K. and CHP later MBS
Sequence & var. marked on B 10810

Plate	J.D.	Est. EK	phase P=190 Est. CHP
B 4639	11325	= l	
10810	12918	l-m	
17166	13786	= d	
46212	20866	= g	+31
46250	20931	n.s., g seen	+96 *
46338	20951	= l	+116
46363	20952	= l	+117
46369	20952	= m	+117
46378	20953	= m	+118
46574	20991	= g	-34 +156
46602	20994	d-e	-31 +159
46781	21000	d	-25 +165
46806	21002	d	-23 +167
49007	21162	g-h	-53 +137
49103	21168	g	-47 +143
49132	21169	e	-46 +144
49235	21183	c	-32 +158
49275	21187	d	-28 +162
45848	20761	n.s.	
45925	20767	b-c?	
46219	20898	b-c	
46522	20977	n.s.	+142 *
46533	20985	a-b	-40 +150
48590	21149	n.s.	+124 *
49500	21263	e-f	+48
49506	21268	= g	+53
49555	21271	n.s.	+56 *

not 19 m.B. 8 and 1214.
Yellow "Signis" Not SeenYellow
Yellow

E seen f n s difficult

yellow

d seen & not seen

Plate	J.D.	Est. MBS		Phase P=190 ^d
B 52150	21575	b-c		-20 +170
52184	21626	= c	images large	+31
52205	21664	El m n.s.	good plate	+69
Am 16137	23372	m-n		-123 +67
16134	23359	h-k		+54
15673	23132	ns	Difficult	
15686	23162	ns	C seen d n.s.	
16155	23403	= n	images long	+98
16168	23465	d-e		-30 +160
16174	23487	= d		-8 +182
16203	23527	d-e		+32
16503	23784	k-l		+99
16538	23792	l-m		+107
16565	23798	= k	l seems brighter than k	+113
16589	23813	El i ^m	m n.s.	-62 +128
16615	23821	h-k		-55 +135
16631	23827	f-g		-49 +141
16653	24121	h-k		+56
16679	24141	= m		+76
16701	24168	ns	d seen E n.s.	+103*
16710	24197	h-k		-58 +132
15680	23154	= d	plate poor	+39
Qx 917	24091	d-e		+26
961	24164	= ns	l seen k n.s.	+99*
1431	24502	h-k		+57
1444	24506	h-k		+61
1509	24536	[n	var barely seen	+91
1525	24550	[n		+105
1570	24623	d-e		-12 +178
1592	24579	f-e		-56 +134

22

Plate	J.D	Est MBS	Phase
ay 1944	24797	=g	-28 +162
1986	24825	d-e	0
2087	25210	c-d	-5 +185
am 15576	22820	n.s.	+85*
10297	20482	c-d	+27
11300	20774	n.s.	-61 +129*
11484	20843	d-e	+8
12651	21158	h-k	-57 +133
12815	21202	=c	-13 +177
12820		ns	
12837	21219	=d	+4
12844	21220	c-d	+5
12852	21224	=c	+9
12862	21263	e-f	+48
12869	21269	g-h	+54
12877	21273	n.s.	+120 +58*
13014	21335	[l l ^m {l seen f not seen	-70 +120
13026	21336	[l l ^m {m not seen variable seen	-69 +121
13062	21348	h-k	-57 +133
13755	21575	=d	-20 +170
13773	21626	d-e	+31
13835	21694	n.s. h seen, k not seen	+99*
13852	21697	n.s. k seen, l not seen	+102*
13880		n.s.	+110
13922	21714	[l l ^m yellow plate m not seen var. seen	+119
14570	21994	=d	+19
14607	22055	=n	+80
14660	22079	[l l ^m m not seen, variable seen	+104
15054	22262	n.s. h seen k not seen	+97*
15106	22432	ns l seen, m not seen	+97*

am

*
8

Dec 31, 1928

Z Aquarii MBS position 234716
 Variable marked on B16154

on AX plates companion star of Var interferes
 with ^{some} measures.

Plate	LD	Est MBS
B 28334	15621	d-e
B 25922	15266	c-d
B 14460	Aug 29 1895 13435	=e
B 23939	Aug 18 1899 14885	=e
B 23603	July 19 1899 14855	b-c
B 18494	Feb 3 1897 13959	=e
B 23151	June 20 1899 14826	=d
B 25800	15262	=c
B 28519	15639	e-f
B 28592	15649	b-c
B 28692	15666	c-d
B 30186	15926	=b
B 37175	17166	=a
B 16154	June 5 1896 13716	e-f
AX 680	23971	e-f
629	23962	d-e
877	24082	d-e
1170	24322 ⁻³	b-c
1206	24328 ⁻⁹	=b
1334	24411 ⁻²	=f
1398	24491 ⁻²	=d
1407	24493 ⁻⁴	d-e
1711	24684 ⁻⁵	e-f
1773	24710 ⁻¹	d-e
1840	24742 ⁻³	=c
1849	24745 ⁻⁶	=b

difficult

Plate	JD	Est MRS
AX1871	24761 ²	c-d
1908	24772 ³	=e
2029	25176 ⁷	=e
2061	25197 ⁸	e-f
AM 15905	23234	=e
15951	23250	=c
16396	23 ⁶⁶⁶ 334	=b
16433	23 ³³⁴ 334	=e
16008	23270	c-d
16374	23649	=e
16345	23620	e-f
16105	23338	e-f
16082	23318	=e
89	14876	=f
110	14891	g e-f
118	14892	d-e
201	14938	=e
235	14952	d-e
519 334	14991	b-c
519	15198	n.s. e seen not seen
551	15195	c-d
580	15234	b-c
603	15262	b-c
687	15308	n.s. d seen e not seen
865	15556	=e
884	15560	e-f
892	15561	=e
952	15599	=f
969	15604	n.s. e seen f not seen
1011	15620	d-e

check Julian Days

plate fogged

32

Z Aquarii

Plate	²⁴⁺ 2.D.	Est. M.B.S.	
AM 1055 1076	15659	b-c	
1089	15662	b-c	
1121	15723	n.s. ^{d seen} e not seen	
1328	15911	=c	
1357	15914	b-c	
1377	15918	b-c	
1393	15926	b-c	plate fogged
1504	15976	=e	
1598	16027	e-f	
1611	16030	=e	
1659	16047	=b	
1725	16085	n.s. ^{c seen} d not seen	
1758	16101	=c	
1766	16107	=d	
Jan 28 '29 39	14868	c-d	
4342	17384	=e	
4345	17385	=e	
4424	17413	=d	
4440	17418	c-d	
4449	17422	b-c	
4508	17443	v n.s. sequence n.s.	
4524	17446	b-c	
4530	17447	=b	
4574	17469	d-e	
4615	17493	e-f	
4698	17531	e-f	
4904	17732	=d	
4921	17738	=e	
4915	17735	=d	
5029	17788	e-f	
5073	17804	=c	

Plate	J. D.	Est. MBS	
AM 5083	17806	c-d	
5135	17830	b-c	Multiple exposure plate
5151	17835	a-b	
5202	17864	b-c	fogged
5619	18123	c-d	check Julian Day
5676	18115	=d	
5802	18191	e-f	
5729	18158	d-e	
5755	18171	e-f	
5863	18215	c-d	exposures on two different fuels
5872	18230	c-d	different
5894	18254	b-c	fogged
6267	18479	e-f	trails
6296	18484	e-f	"
6376	18506	=b	
6457	18531	c-d	
6468	18533	c-d	
6478	18535	b-c	trails
6510	18540	b-c	
6649	18589	e-f e-e'	e' introduced because of great difference between e and f.
6679	18596	e-e'	
6748	18615	=e	
6784	18631	e-e'	
7030	18842	e-e'	
7123	18865	=f	barely visible
7143	18871	[e'	
7150	18879	e'-f	
7153	18880	sequence n.s.	
7189	18888	=e'	
7201	18896	e-e'	
7261	18918	=c	

34

Z Aquarii

plate	J.D.	Est. m.B.S.
AM 7275	24 18922	b-c
7527	19224	c-d
7644	19251	= e'
7728	19276	n.s. sequence n.s.
7732	19277	v. n.s. e' seen
7754	19295	e-e'
7813	19302	= e
7865	19323	a-b
7897	19328	b-c
8224	19544	[d
8232	19545	[e
8385	19578	e'-f
8497	19604	= c
8508	19607	b-c
8536	19618	b-c
8548	19630	b-c
8570	19634	= c
8610	19652	c-d
8667	19676	e'-f
8673	19677	= f
8747	19709	[d
8766	19726	n.s. seq. n.s.
9043	19928	= e
9124	19946	failed to identify field,
9155	19951	" " position of plate wrongly
9174	19954	" " marked?
9236	19972	e-e'
9278	19979	e'-f
9302	19984	= d
9334	19988	= c

double exposure

AM 9418	24 20016	b-c	
9434	20019	b-c	
9481	20034	d-e	
9552	20045	=e	
9587	20069	v n.s. seq. n.s.	trails
9621	20097	" "	images trailed + spotted
9659	20124	=c	
9971	20336	[e	
10136	20492	=c	check Julian Day
10141	20393	=d	20392 ? so plotted
10167	20406	n.s.	plate poor
10179	20413	=c	
10187	20416	c-d	
10199	20422	b-c	
10210	20425	b-c	
10217	20428	b-c	
10226	20430	=c	
10254	20438	n.s.	poor plate
10862	20699	"	" "
10898	20707	not identified	yellow plate
11089	20747	c-d	
11132	20752	=e	
11138	20753	d-e	
11195	20759	n.s.	
11254	20765	not identified	
11262	20767	e'-f	
11440	20813	c-d	
11808	21009	=e'	
11853	2421012	=e'	

36

Z Aquarii

Feb 18 '29

Plate	J.D.	Est. M.B.S.	
AM 3994	24 17175	b-c	
3925		not identified	
4017	17193	c-d	
4021	17194	c-d	
4056	17238		star not on plate
4064	17240	= e	
4298	17374	e-e'	
2003	16269	= e'	
2020	16278	= f	
2049	16282	e'-f	
2173	16331	= b	
2203	16340	= a	
2211	16342	a-b	
2311	16397	= e'	
2322	16400	e'-f	
2397	16459	= c	
2666	16622	b-c	
2736	16642	b-c	
2877	16685	= f	
2926	16698	e'-f	
2982	16715	c-d	
3034	—		series of images, could not est.
3035	—		"
3037	16740	c-d	
3077	16752	= c	
3116	16760	b-c	
3126	16765	= c	trail
3131	16766	= c	
3205	16794	e-e'	
3724	17039	b-c	

Plate	J. D.	Est. MBS	
AM 3734	24 17052	= c	
3771	17067	= c	
3819	17079	= e	
3865	17097	e' - f	
11907	21021	n.s. [e'	
12465	21127	= e	200
12495	21133	e - e'	
12512	21135	e' - f	
12526	21136	e' - f	
12566		n.s.	yellow
12688, 12708, 12731			"
12735	21168	= e	
13580	21482	b - c	
13583	21485	b - c	
13588	21486	= c	
14402	21851	= e'	
14428	21860	sequence n.s.	
14434	21861	e - e'	
14441	21864	= d	
15325	22525	n.s.	trails
15356	22530	n.s.	yellow ?
15478	22577	e - e'	
15551	24226 32	n.s.	yellow ?
ay 1790	25183 ⁺	b - c	
ax 660	23968	e - e'	
721	23992	e' - f	
776	24240 24	= f	
826	24051	b - c	
869	24077	= c	

check for
Julian Day

Feb 25 '29

AX	891	24086	= c
	941	24135	= f
	1190	24326 ⁻⁷	= a
	1315	24403 ⁻⁴	e' - f
	1358	24431 ⁻²	= d
	1390	24488 ⁻⁹	= d
	1429	24502 ⁻³	= d
	1459	24517 ⁻⁸	e - e'
	1774	24710 ⁻¹	= c
	1845	24744 ⁻⁵	= b
	1882	24765 ⁻⁶	c - d
	1928	24789 ⁻⁹⁰	e - e'
	1937	24791 ⁻²	e' - f
	1973	24815 ⁻⁶	e' - f
	2014	25153 ⁻⁴	= d
	2022	25157 ⁻⁸	= d
	2063	25199 ⁻²⁰	= e
	2094	25225 ⁻⁶	e' - f
	2095	25227 ⁻⁸	= f
AC	23936	22911	n.s. <i>sequela n.s.</i>
	24024	22989	[d
	24204	22969	b - c
	24264	22983	= b
	24320	22990	b - c
	24501	23044	[c
	24517	23046	e' - f
	24867	23223	= e
	25334	23646	= e
	25382	23677	b - c
	25625	24036	f

trails

AC 25638	24 24054	$b-c$	
25643	24056		trails
26958	25530 ⁻¹	$= e'$	
26974	25540 ⁻¹	$= d$	
AM 15667	22934	$[b$	
16007	23270	$b-c$	
16111	23339	$e'-f$	
16369	23648	$b-c$	
16411	23670	$= b$	
16513	23787	$b-c$	
16519	23788	$= c$	
16574	23801	$= c$	
16665	24137	$= e'$	max. 4'29
AC 16868	20793	$[a$	
16661	20726	n.s.	
16893	20798	n.s.	yellow
17097	20843	$b-c$	
17127	20848	$b-c$	
17775	21089	n.s.	
17783	21090	n.s.	
17993	21147	$[c$	
18016	21151	$= e'$	
18259	21205	$d-e$	
19052	21466	$[d$	
19244	21506	$= e$	
19282	21516	$[d$	
19291	21518	$e-e'$	
19317	21524	$= b$	yellow
19343	21532	$a-b$	yellow
19571	21593	$e'-f$	
20363	21820	$[c$	

40

AC 20370

20416

20583

20611

20782

21532

21564

21685

21713

21909

21952

23156

23787

21821

21832

21875

21889

21933

22138

22180

22191

22260

22679

[d

[a

= d

= d

c-d

n.s.

= e

b-c

e-d

not identified

= e'

[d

not identified

yellow

march 11, 1929

50

march 25 1929

MBS

R Lupi

approx $P = 234.5^d$
position 154736

Variable marked on B 9664, B16612

Sequence chosen on B19053

Plate

G.D.

Est.

AM 11622	20960	Apr 6 1916	[g]
B 10962	12937		K-l
B 11279	12972	May 23 1894	= m
B 9664	12638	June 23 1893	h-k
B 16612	13743	July 2 1896	[g]
AM 11077	20740	Aug 30 1915	[e]
AM 11063	20738	Aug 28 1915	ns
B 19053	14055	May 10 1897	g-h
AM 10927	20711	Aug 1 1915	[g]
10720	20670	June 21 1915	[h]
10698	20667	June 16 1915	[g]
10621	20653	June 4 1915	[g]
10596	20650	June 1 1915	[g]
8288	19559	June 5 1912	[g]
8596	19650	Sept 4 1912	= g
10391	20594	Apr 6 1915	= g
10485	20612	Apr 24 1915	= h
2658	16619	May 18 1904	h.s
1773	16107	Dec 23 1902	[d]
1774	16108	Dec 24 1902	[c]
11900	21021	June 6 1916	[g]
11913	21022	June 7 1916	= g
11924	21023	June 8 1916	g-h
12361	21099	Aug 23 1916	[g]
12367	21100	Aug 24 1917	= d
12371	21101	Aug 25 1916	[e]

x present

marking of var. interferes

w present

w present faint

multiple exposures
not difficult

defect?

12993	21332	april 13 1917	[h]	
1276	15897	may 27 1902	[g]	
1246	X		X	multiple exposures
136	14904	sept 6 1899	[g]	
2570	16593	april 22 1904	[k]	
180		sept 30 1899	[c]	trails
394	15108	may 29 1900	[e]	
453	15147	may 7 1900	[k]	
474	X		X	trails
613	15264	sept 1 1900	f-g	
643	15274	sept 11 1900	[e]	
784	15518	may 13 1901	[f]	
799	15527	may 22 1901	[e]	
807	15532	may 27 1901	=h	
849	15547	june 11 1901	[g]	isochromatic
904	15572	july 6 1901	[g]	
906	15575	july 9 1901	[d]	
945	15591	july 25 1901	[k]	
1234	15872	may 2 1902	[g]	
1242	15879	may 9 1902	[g]	
1299	15904	june 2 1902	=g	
1534	16008	sept 15 1902	[g]	
1482	15956	july 25 1902	=g	
1909	16240	may 5 1903	=m	
1925	16242	may 7 1903	=l	
1950	16253	may 18 1903	[k]	
1972	16264	may 29 1903	[k]	
2069	16290	june 24 1903		trails
2091	16298	july 2 1903	[l]	
2159	16323	july 27 1903	[k]	

R Lupi

Apr 22/29

M	2269	16372	Sept 14 1903	= k	
	2278	16376	Sept 18 1903	= k	
	2486	16558	March 18 1904	[g]	
	2556	16589	Apr 18 "	[k]	
	2600	16604	May 3 1904	[k]	
	2638	16608	May 7 "	[k]	
	2677	16625	May 24 "	k-l	
	2719	16638	June 6 "	= g	
	2744	16644	" 12 "	= g	
	2803	16664	July 2 "	g-h	
	2884	16691	" 29 "	[h]	
	2946	16707	Aug 14 "	[g]	
	9	14861	July 25 1899	[g]	
	1276	15897		[g]	
	10106	20386		[g]	
	9995	20331	July 27 1914	[e]	
	10041			trail [trails
	10046	20357	Aug 12 1914	[d]	
	10089	20369	Aug 24 "	[b]	
	10091	20370	Aug 25 "	[e]	
	10102				trails
	10137	20393		[g]	
	10183	20415		[g]	
	10557	20624		= h	
	10569				trails
	10740	20681		[d]	
	10779	20690		[g]	
	10787	20691		[g]	
	10811	20694		[g]	
	10819	20695		[d]	

Am 10901	20708		Σh
10919	20710		Σg
11110	20750		Σg
11679	20991		Σg
11685	20992		Σg
B 20279	14181	Sept 13 1897	p-q
18586	13987	March 3 "	Σn
18706	14013	Mar 29 "	Σm
18765	14022	Apr 7 "	= l
19434	14084	June 8 "	= f
19642	14105	June 29 "	= f
19715	14108	July 2 "	= g
21128	14382	Apr 2 1898	m-n
21571	14448	June 7 "	m-n
21805	14479	July 8 "	= m
10962	12937	Apr 18 1894	h-k
12915	13290	Apr 6 1895	n-p
13339	13327	May 13 "	= m
14288	13409	Aug 3 1895	f-g
15389	13626	March 7 1896	e-f
15433	13635	" 16 "	= f
15519	13653	Apr. 3 "	g-h
15585	13661	" 11 "	g-h
15647	13673	" 23 "	k-l
15697	13684	May 4 "	= l
16067	13713	June 2 "	p-q
16144	13716	June 5 "	= p
19053	14055	May 10 1897	= g

Σ not plotted

images poor

54

Plate

2D

R Lupi

date

ast

may 27 '29

31854	2416245	may 20 1903	= p
32125	16302	july 6 "	[m
21501	14436	may 26 1898	[m
22503	14751	Apr 6 1899	k-l
22923	14743	May 29 1899	e-f
23917	14885	July 18 1899	[m
9940	12670	july 25 1893	= d
9974	12671	july 26 "	d-e
11787	13051	Aug 10 1894	[g
5331	11517	may 29 1890	g-h
5373	11526	june 7 1890	k-l
11114	12963	may 14 1894	= n
12824	13247	Feb 22 1895	[k
18305	13934	Jan 9 1897	[g
18356	13946	" 21 "	p-q
18533	13960	Feb 4 "	[n
21925	14538	Sept 5 1898	f-g
23443	14849	july 13 1899	[k
24919	15110	March 31 1900	= n
25494	15169	May 29 "	> g
25907	15266	Sept 3 "	= g
30551	15976	Aug 14 1902	= g
31768	16249	May 14 1903	= m
38000	17805	Aug 17 1907	= f
28400	15631	Sept 3 1901	[m
6655	11953	Aug 8 1891	= e
15983	13691	May 11 1896	[k
16021	13710	" 30 "	n-p
20274	14181	Sept 13 1897	[l
13305	13325	May 11 1895	l-m

Nothing with smaller RA
 Hare 15^h 25^m
 can be used for
 this star

55

plates bet. 1907 + 1917
 at AM, MF, AK?
 especially 1915, 1916, 1917

plate in wrong envelope
 poor images
 poor images

B13971	2413749	July 8 1895	d-e
16877	13758	" 17 1896	[p
16408	13729	June 17 "	[m
17289	13803	Aug 31 "	k-l
17482	13831	Sept 28 "	f-g
14029	9726 12632	June 27 1893	=g
31337	16149	Feb 3 1903	g-h
36613	17069	Aug 11 1905	[l
5912	11869	May 16 1891	[g
38785	18058	Apr 26, 1908	=g
36396	17038	July 11, 1905	[n
34140	16652	June 20, 1904	=f
12842	13289	Mar 5, 1895	[m
19318	14107	June 1, 1897	d-e
21343	14398	Apr. 18, 1898	=m

of plate 64.552
 97262
 9974
 12824

60

R Y Gemin I 39770

PLATEJDDATE

Est AH.

AX 79
 AY 1213
 AY 862

Mar 20, 1923 = f
 Nov 4-5, 1926 = k
 Nov 9-10, 1925 e - f

RX Gem

I-26070

61

PLATEJDDATE

Est. A.H.

AX 79

AY 1213

AY 862

Mar 20, 1923

= g

Nov. 4-5, 1926

= b

Nov 9-10, 1925

= d

<u>063942</u>		RV Puppis		Kohler	
		<u>9.1</u> <u>11.5</u>		Mie Payne	
		B 15273 [✓]			
B 10810	46363	49007	49479	45848	
B 26852	46369	49103	49500	45925	
4639	46378	49132	49506	46219	
17166	46574	49235	49555	46522	
46212	46602	49275 [✓]	52150	46533	
46250	46781		52184	48590	
46338	46806		52205		

