

53







Frances Woodworth Wright







RS Tel	p.1
RY CrA	8
RW Tel	"
SV, RY Tel	16
W, X, Y Ind	24
Y Pav, V Oct	32
W Mic, U Gru	40
X Mic	58
U For	66
DI, DN, DP, DQ, DL Sgr	74
BM Sgr	86
AO Cen	96
RR CrA	104
BL Sco	112
TX Cen	122
W Psc	132
SU Idr	140
U Cha	148
UU Vel	156
Z Oct	160
TU Lib	168
RS Tel	174

SY Aqr ..... 210



[illegible]



RS Tel. Marked on AX 812

Arbitrary sequence marked on AX 812

Sequence  
at B 25388  
1922

- Tel

Plate	Date	J.D.	Estimate	Remarks	
AX 812	Sept 16, 1924	24045	= f - g	Elongated	10.4
AM 15601		22850	= m	the first sequence	11.2
AM 15631		22871	n.s. m seen	was too far	
AM 16020	Aug 11, 1922	23278	n.s. a seen ns	from RS Tel	
AM 16063		23307	n.s. j seen ns	the	
AX 1067		24290	n.s. n seen	h seen } sequence on	
AX 1068		24290	n.s. n seen	B 25388 was	[n
AX 1086	May 25, 1925	24296	n.s. n seen	this one finally	[n
AX 1098		24299	n.s. n seen	Poor plate used	n.s.
AX 1107	May 29, 1925	24300	n.s. n seen		[n
AX 1153	June 16, 1925	24318	n.s. n seen		n.s.
AX 1164	June 18, 1925	24320	n.s. n seen		[n
AX 1187	June 24, 1925	24326	n.s. n seen	Trailed	n.s.
AX 1196	June 25, 1925	24327	n.s. n seen		[n
AX 1246	July 25, 1925	24357	n.s. n seen	Trailed	n.s.
AX 1250	July 27, 1925	24359	n.s. n seen		[n
AX 1267	Aug. 8, 1925	24371	n.s. n seen		n.s.
AX 1274	Aug 11, 1925	24374	n.s. n seen		n.s.
AX 1332	Sept 17, 1925	24411	n.s. n seen		n.s.
AX 1364	Oct 9, 1925	24433	n.s. n seen		n.s.
AX 1373	Oct 16 1925	24440	n.s. n seen		[n
AM 15730		23176	= j - R	f	n.s.
AM 15782		23191	= m	g	[n
AM 15852		23219	= j	f	n.s.
AM 15862		23221	= j	f	n.s.
AM 15868	June 16, 1922	23222	= j - R	h? sequence faint	n.s.
AM 15892		23233	= j - R		n.s.
AM 15916		23236	= j - R	i	n.s.



R.S. Tel  
Plate

Date

g.D.

Estimate Remarks

Sequence  
25388  
v g

- Tel.

Am 15920

23237

=j-k

g-h

[m

Am 15921

23237

=j-k

f-g

[n

Am 15948

23250

=k

h-

[n

Am 15999

23268

=j-k

g

[m

AX 1275

Aug 11, 1925

24374

sus.

v.

[n

~~AX 1307~~~~24402~~~~sus.~~

Trails

~~[n~~

AX 1308

24402

[En

v

[n

AX 15796

23194

j-k

e-f

sus

Am 15803

23197

j

e-f

n.s.

Am 15853

23219

j

f

n.s.

Am 15995

23267

j

g-h

sus

Am 15998

23268

i

f

sus.

Am 16222

23533

f

e-f

n.s.

Am 16223

23533

f

e

sus.

Am 16288

23575

i

e-f

n.s.

Am 16295

23576

f

e

n.s.

Am 16318

23610

f

e

n.s.

Am 16353

23640

f

e-f

n.s.

Am 16361

23647

e-f

e-

n.s.

Am 16393

23666

f

e

sus.

Am 16414

23673

f-g

e-

n.s.

Am 16424

23692

f

e

n.s.

AX 474

23900

e

e-f

n.s.

AX 484

23902

e-f

e-f

n.s.

AX 527

23918

e-f

de Trails

n.s.

AX 608

23959

e

e

n.s.

AX 614

23960

e

e

n.s.

AX 622

23961

e

e

n.s.

AX 640

23964

e

e

n.s.



Sequence on  
B 25388

R.S. Tel.

- Tel

Plate	Date	G.D.	Estimate	Remarks	
AX 652		23967	e	e-e	sur.
AX 682		23972	f	d-e	n.s.
AX 689		23974	f	et	n.s.
AX 712		Rel.	Mag. d=8.6		n.s.
AX 713		e 2.3	e 9.0	e-f 9.6	n.s.
AX 762		f 3.5	f 10.2	f-g 10.4	n.s.
AX 773		g 3.8	g 10.5		n.s.
AX 805		h 3.7	h 10.4		n.s.
AX 806		i 4.0	i 10.7		n.s.
AX 862		j 4.1	j 10.8		n.s.
AX 865		k 4.2	k 10.9		n.s.
AX 1577		l 4.2	l 10.9		[n
AX 1578		m 4.5	m 11.2		[n
AX 1617		n 5.2	n 11.9		[n
AX 1624				Trailed	[n
AX 1640				Trailed	[n
AX 1649				Trailed	sur.
AX 1657					[n
AX 1671				Trailed	n.s.
AX 1706					[n
AX 1735		24700	d-e x	et	[n
AX 1746		24704	e-f	e	n.s.
AX 1761		24707	e		[n
AX 1775		24711	d-e x	et	[n
AX 1792		24713	d-e x	et	[n
AX 1798		24716	f-g	et	n.s.
AX 1836		24739	e-f	e	n.s.
AX 1837		24739	e-f	d-e	[n
AX 1855		24755	e-f	et	n.s.

RS Telescopic  
First sequence



R.S. Fel.

Sequence on  
B125388

- Tel

Plate	Date	g.D.	Estimate	Remarks	
AX 652		23967	e	e	rus.
AX 682		23972	f	d-e	n.s.
AX 689		23974	f	et	n.s.
AX 712					n.s.
AX 713					n.s.
AX 762					n.s.
AX 773				Trailed	n.s.
AX 805					n.s.
AX 806					n.s.
AX 862					n.s.
AX 865					n.s.
AX 1577					n.s.
AX 1578					[n]
AX 1617					[n]
AX 1624				Trailed	[n]
AX 1640					[n]
AX 1649				Trailed	rus.
AX 1657					[n]
AX 1671				Trailed	n.s.
AX 1706					[n]
AX 1735		24700	d-e	x et	[n]
AX 1746		24704	e-f	e Trailed	n.s.
AX 1761		24707	e		[n]
AX 1775		24711	d-e	x et	[n]
AX 1792		24713	d-e	x et	[n]
AX 1798		24716	f-g	et Trailed	n.s.
AX 1836		24739	e-f	e	n.s.
AX 1837		24739	e-f	d-e Trailed	[n]
AX 1855		24755	e-f	et	n.s.

No 3

-41° 44' 04" 38.4 -41 28

-41° 28' 55" 37.5 -41 23 8.7

B 19156

74

plus Bl. 72, 160

Lines broad.



Sequence on  
B125388

R.S. Sel.	Plate	Date	J.D.	Estimate	Remarks	- Sel
	AX 652		23967	e	e-e	pus.
	AX 682		23972	f	d-e	n.s.
	AX 689		23974	f	et	n.s.
	AX 712		23988	f	ef	n.s.
	AX 713		23991	f	e	n.s.
	AX 762		24019	e-f	et	n.s.
	AX 773		24024	e-f	de Trailed	n.s.
	AX 805		24035	e	et	n.s.
	AX 806		24035	e-f	e	n.s.
	AX 862		24047	e-f	de	n.s.
	AX 865		24076	f	et	n.s.
	AX 1577		24626	e-f	e	n.s.
	AX 1578		24626	f	e	[n]
	AX 1617		24626	f	e	[n]
	AX 1624		24648	e-f	e Trailed	[n]
	AX 1640		24651	e-f	e	[n]
	AX 1649		24654	d-e	x Trailed	pus.
	AX 1657		24656	e	et	[n]
	AX 1671		24669	e	et Trailed	n.s.
	AX 1706		24683	e	e	[n]
	AX 1735		24700	d-e	x et	[n]
	AX 1746		24704	e-f	e Trailed	n.s.
	AX 1761		24707	e		[n]
	AX 1775		24711	d-e	x et	[n]
	AX 1792		24713	d-e	x et	[n]
	AX 1798		24716	f-g	et Trailed	n.s.
	AX 1836		24739	e-f	e	n.s.
	AX 1837		24739	e-f	de Trailed	[n]
	AX 1855		24755	e-f	et	n.s.



R. S. Tel.		Sequence on B 25388		- Tel.
Plate	Date	J.D.	Estimate	Remarks
AX 1862		24759	e-f	res.
AX 1891		24767	e	[n]
AX 1969		24814	d-e x	[n]
B 11759	Aug 7, 1894	13048	h	n.s.
B 16572	July 1, 1896	13742	e	n.s.
B 19176	May 22, 1897	14067	e	[n]
B 21282	April 26, 1898	14406	e	res.
B 21552	May 31, 1898	14441	b phy	[n]
B 21920	Sept. 3, 1898	14536	b x	excellent [n]
B 23060	June 16, 1899	14822	a x	[n]
B 24374	Oct. 13, 1899	14941	a x	[n]
B. 25178	April 26, 1900	15136	j-h	[n]
B 25530	June 4, 1900	15175	h	[n]
B 26082	Sept 12, 1900	15275	e	[n]
B. 26118	Sept 13, 1900	15276	f-g	[n]
B 28623	Oct. 3 1901	15661	e-f	[n]
B 30500	July 31, 1902	15962	k x	[n]
B 33585	May 3, 1904	16604	f-g x	[n]
B 34025	June 8, 1904	16640	f approx e-f	[n]
B. 6109	May 29, 1891	11882	e x	n.s.
MT 4417	Aug 15, 1919	22186	e-f	[n]
MT 4571	Aug 24, 1919	22195	f x	[n]
MT 4581	Aug 25, 1919	22196	f-g x	[n]
MT 4670	Aug 28, 1919	22199	e	[n]
B 41502	June 26, 1910	18849	n.s. n recur	[n]
B 42313	May 19, 1911	19176	n.s. n recur	[n]
B 5311	May 28, 1890	11516	e-f	[n]
AX 763	Aug 21, 1924	24019	f	[n]
B 14040	July 9, 1895	13384	f-g x	[n]



R. S. Tel.		Arbitrary Sequence		Waras	Sequence on B25388	B11633 - Tel	
Plate	Date	J.D.	Estimated	Remarks			
B 11633	July 20, 1894	13030	$g-h=f-g \times \frac{1}{2}$			[g]	
B 13750	June 12, 1895	13357	$f=d-e \times \frac{1}{2}$			[f]	
B 19483	June 9, 1897	14085	$b=c-e \times \frac{1}{2}$			[b]	
B 21079	March 26, 1898	14375	$g-h=f-g \times \frac{1}{2}$			n.s.	
B 22511	April 6, 1899	14751	$f=d-e \times \frac{1}{2}$	Blurred		n.s.	
B 23481	July 15, 1899	14851	$f=d-e \times \frac{1}{2}$	"		n.s.	
B 25423	May 23, 1900	15163	$m-n=m-o \times \frac{1}{2}$	"		n.s.	
B 30362	July 14, 1902	15945	$m-n=m-o \times \frac{1}{2}$			[g]	
B 3811	July 13, 1889	11197	$e=c-e \times \frac{1}{2}$			n.s.	
B 39057	May 29, 1908	18091	$c-d=c-e \times \frac{1}{2}$			n.s.	
B 42310	May 19, 1911	19176	n.s. $g$ <sup>seen</sup>			n.s.	
B 3943	Aug. 5, 1889	11220	$c=c-e \times \frac{1}{2}$			[g]	
A 2597	Aug 3, 1897	14140	$e-f=c-e \times \frac{1}{2}$			[n]	
A 2612	Aug 4, 1897	14141	$e-f=c-e \times \frac{1}{2}$	Blurred		n.s.	
A 3194	July 23, 1898	14494	$f=d-e \times \frac{1}{2}$			[n]	
A 3226	Aug 13, 1898	14515	$f=d-e \times \frac{1}{2}$	Trailed		[n]	
A 5631	Sept 5, 1901	15633	$f=d-e \times \frac{1}{2}$			[n]	
A 5643	Sept 10, 1901	15638	$f=d-e \times \frac{1}{2}$			[n]	
A 5651	Sept 12, 1901	15640	$f=d-e \times \frac{1}{2}$			[n]	
A 5688	Oct 1, 1901	15659	$f=d-e \times \frac{1}{2}$			[n]	
A 6788	June 29, 1904	16661	$g=f-g \times \frac{1}{2}$			[n]	



R. S. Tel

Plate

Date

J. D.

Estimate

Remarks

B 3716

July 3, 1889.

11187

a +

sus. &amp; seen

B 5420

11533

e

e

sus. &amp; seen

B 25343

May 18, 1900

15158

e

e

sus. &amp; seen

B 25517

June 1, 1900

15172

d x

et

sus. "

B 28736

Oct 10, 1901

15638

f

f

edge

n.s.

B 41379

May 29, 1910

18821

h.s. seen

sus.

B 40380

May 30, 1909

18457

e

E

sus.

AM 2037

16281

g

f+

AM 4886

17728

e

h

AM 5593

18115

e

f

AM 9012

19924

e

f+

AM 9929

20325

e

e-

AM 10043

20356

e

et

AM 10462

20609

e

e-f

4170

AM 10605

20651

f

e

AM 10624

20653

e

et

AM 10684

20664

e

et

AM 10710

20668

e

e

AM 10717

20669

e

e

AM 10929

20711

e

e

4732

AM 10984

20723

e-

e

AM 10985

20723

f

e

AM 10993

20724

f

e-f

AM 11073

20739

e-f

et

AM 11078

20741

e-f

e-f

AM 11305

20775

f

f?

AM 11888

21018

f-f

et

AM 11903

21021

e-f

et



Sequence  
from Be 5388Sequence  
from Be 5388

7.

RS Tel. Plate	JD	Estimate	RS Tel Plate	JD	Estimate
AM 11944	21025	e-f	AM 107	14891	e
AM 12286	21077	e-f	AM 125	14898	e-f
AM 12291	21078	e-f	AM 506	15191	e
AM 12309	21081	e-f	AM 592	15261	e-f
AM 12582	21151	e-f	AM 827	15541	e
AM 12599	21154	e-f	AM 869	15557	e
AM 12614	21155	e-f	AM 882	15560	e
AM 13007	21333	e-f	AM 949	15599	e
AM 13055	21344	e-f	AM 981	15607	e
AM 13255	21391	e-f	AM 1001	15618	e
AM 13277	21394	e-f	AM 1073	15659	e
AM 13295	21397	e-f	AM 1094	15666	e-f
AM 13479	21447	e-f	AM 1099	15668	e-f
AM 13485	21449	e-f	AM 1201	15854	thin, no spec
AM 13498	21452	e-f	AM 1210	15866	no spec
AM 13507	21454	e-f	AM 1327	15911	no spec
AM 13516	21456	e-f	AM 1345	15913	no spec
AM 13677	21516	e-f	AM 1364	15915	no spec
AM 13688	21523	e-f	AM 1390	15926	no spec
AM 14023	21749	e-f	AM 1491	15971	no spec
AM 14038	21751	e-f	AM 1632	16033	h
AM 14261	21810	e-f	AM 1653	16044	g
AM 14267	21812	e-f	AM 1854	16208	e
AM 14352	21834	e	AM 1875	16226	e-f
AM 14791	22133	e-f	AM 1994	16268	e-f
AM 14881	22172	e-f	AM 2005	16270	e
AM 14939	22192	e-f	AM 2050	16283	e
AM 15418	22551	e-f	AM 2075	16293	e-f
AM 15535	22607	e-f	AM 2178	16337	e

cont. on page 174



Marked on AX 812  
R. Y. Cr. A. Marked on AX 812

R.W. Feb

Arbitrary Sequence

Plate	Date	J. D.	Estimate	Remarks	
AX 812	Sept 16, 1924	24045	En n seen	Elongated	b
AX 1275	Aug. 11-12, 1925	24374-75	En n seen		b
AX 614		23960	k		e
AX 622		23961	j-k		e
AX 652		23967	k		f-g
AX 713		23991	En		f-g
AX 763		24019	En		f
AX 806		24035	n		b
AX 1068		24290	En		c
AX 1107		24300	En		b
AX 1164		24320	[En		b
AX 1196		24327	n		b
AX 1250		24359	m		c
AX 1308		24402	k		a
AX 1373		24440	n		b
AM 15601		22850	n.s. j seen		b
AM 15631		22871	n.s. n seen		d
AM 15730		23176	n.s. j seen		e-f
AM 15782		23191	n		e
AM 15796		23194	En		d-e
AM 15803		23197	n.s.		f
AX 1775		24711	m	Trailed	e
AX 1798		24716	En	"	d-e
AX 1836		24739	n	"	e-f
AX 1855		24755	En	"	e
AX 1862		24759	n	"	f
AX 1946		24798	En		d
AX 1746		24704	n	Trailed	d



R.Y. Cr. A

R.W. Lib

Plate	Date	J.P.	Estimate	Remarks	
AX 1671		24669	m		e-f
AM 15852		23219	l		e-f
AM 15853		23219	[m		e-f
AM 15862		23221	rus. l seen		
AM 15868		23222	rus. j seen		e-f
AM 15892		23233	m m seen		
AM 15916		23236	[m		e
AM 15920		23237	l		
AM 15921		23237	[m		e-f
AM 15948		23250	n		e-f
AM 15995		23267	n	17'-45" above	
AM 15998		23268	l	mid short RW.	
AM 15999		23268	n		f
AM 16020		23278	n.s. e seen	poor plate	n.s. e seen
AM 16063		23307	n.s. j seen		[e-f
AM 16223		23533	[m		e-d
AM 16288		23575	rus. n seen faintly		
AM 16295		23576	rus. n seen		e-f
AM 16318		23610	n		
AM 16353		23640	n		
AM 16361		23647	rus. n seen		c
AM 16414		23673	n.s. m seen		e
AM 16424		23692	n.s. m seen		e-f
AM 16393		23666	rus. n seen		e
AX 474		23900	n		d-e
AX 484		23902	n		d
AX 519		23914	n	blurred	d-e
AX 640		23964	l		f
AX 682		23972	[m	blurred	blurred



10

R.V. Cr. A.	Plate	Date	J.D.	Estimate	Remarks	R.W. Tel.
	AX 1761		24707	h	stars near	a
	AX 689		23974	l-m		stars too near.
	AX 712		23988	n		f-g
	AX 762		24019	n		e
	AX 773		24024	[n	Trailed →	
	AX 805		24035	n		d-e
	AX 1577		24626	n		e
	AX 1617		24646	l		e
	<del>AX 1746</del>		24704	n	Trailed →	
	AX 1624		24648		Trailed	
	AX 1649		24654	l-m		e
	AX 862		24074		Trailed	
	AX 1067		24290	n		f
					Doubled images	
	AX 1098		24299	n		e
	AX 1153		24318	[n		stars too near
	AX 1187		24326		Trailed	
	AX 1246		24357	[n		stars too near.
	AX 1267		24371	[n		"
	AX 1274		24374	[n	Trailed & near edge	e-f
	AX 1307		24402	l	Trailed "	a
	AX 1332		24411	[n		stars too near
	AX 1364		24433	n		"
B	28623		15661	[n		j-k
B	30500		15962	n		e-f
B	33585		16604	n		off plate
B	34025		16640	n	on edge →	a
MF	4417		22186	n		off plate
MF	4571		22195	[n		



R.Y. CrA					R.W. Tel.
Plate	Date	J.D.	Estimate	Remarks	
MF 4581		22196	n	18°-48' does not show R.W. Tel.	
B 41502		18849	[n		e
B 42313		19176	[n		d
B 5311		11516	[n	18°-50'	
B 14040		13384	[n		
B 13750		13357	[n		
B 19483		14085	0 - [n-0		
B 21079		14375	n.s. o seen - [n-0		
B 22511		14751	n.s. o seen - [n-0		
B 23481		14851	g [n-0		
B 25423		15163	n.s. o seen - [n-0		
B 30362		15945	[0 = [n-0		
B 3811		11197	[0 = [n-0		
B 3943		11220	[0 = [n-0		
B 11759		13048	[n		b
B 16572		13742	[n		c
B 19176		14067	[n		e
B 21282		14406	n		e-f
B 21552		14441	[n		d
B 21920		14536	n		c
B 23060		14822	[n		e-f
B 24374		14941	[n		e-f
B 25178		15136	[n		e-f
B 25530		15175	[n		e-f
B 26082		15275	[n		e-f
B 26118		15276	[n	On edge	j-k
B 39057		18091	n.s. o seen - [n-0		
B 42310		19176	[0 = [n-0		
AX 1578		24626	e		e



12

R.Y. Cr. A

Plate

Date

J. D.

Estimate

Remarks

R. W. Tel.

AX 1640

24651

m

c

AX 1657

24656

m

d-e

AX 1706

24683

m

d-e

AX 1735

24700

n

e

AX 1792

24713

n

e

AX 1837

24739

n

e

AX 1891

24767

n

f

AX 1969

24814

n

e

B 6109

11882

[n]

e

B 11633

13030

o-g

- [n=0]

MF 4670

22199

n

A 2597

14140

[n]

A 2612

14141

a

A 3194

14494

[n]

A 3226

14515

[n]

a

A 5631

15633

[n]

A 5643

15638

[n]

A 5651

15640

[n]

A 5688

15659

[n]

A 6788

16661

m

triple → a-b



R. Y. C. A.						RW Lel	Sx Lel	Ry Lel
Plate	Date	J. D.	Estimate	Remarks				
B 3716	July 3, 1889	11187	n		a	n. S. 2nd	-	-
B 3812				leg. blurred				
B 4069	Aug 22, 1889	11237	-		e-f	n	-	-
B 5420	June 14, 1890	11533	[n		e	-	-	-
B 6110	May 29, 1891	11882		leg. off & red yellow				
B 20478	Sept 21, 1897	14189	sup.		e	-	-	-
B 17710	Oct 15, 1896	13848	[n		c	-	-	-
B 13582	June 4, 1895	13349	[n		e	-	-	-
B 22070	Oct 22, 1898	14585	[n		d-e	-	-	-
B 21224	Apr 13, 1898	14393	[n		e	-	-	-
B 22479	Apr 5, 1899	14750	[n		d-e	-	-	-
B 23969	Aug 24, 1899	14891	[n		e	-	-	-
B 25343	May 18, 1900	15158	[n		-	-	-	-
B 25517	June 1, 1900	15172	[n		d-e	-	-	-
B 25881	Sept 1, 1900	15264	n. S.		f	-	-	-
B 27437	May 27, 1901	15532	[n	edge		-	-	-
B 27648	June 11, 1901	15547	[n		e	-	-	-
B 28736	Oct 10, 1901	15638	[n		f	-	-	-
B 33630	May 4, 1904	16605	n		e	-	-	-
B 40380	May 30, 1909	18457	[n		e	-	-	-
B 41379	May 29, 1910	18821	n	edge		-	-	-











16

SV Tel.

marked on AX 812

R.Y. Tel

Arbitrary sequence

Plate	Date	J.D.	Estimate	Remarks	Estimate
AX 474		23900	n.s. n seen	faint plate	L ?
AX 484		23902	n.s. n seen	rather faint	In
AX 527		23918	m	Blurred	L
AX 601		23947	j-k	On edge	In
AX 614		23960	i	good	rev.
AX 622		23961	i-j	good	rev. n seen
AX 640		23964	n.s. n seen	rather faint on edge	n.s.
AX 652		23967	i	good	rev. ?
AX 682		23972	j-k	Blurred	In
AX 689		23974	j-k	Blurred faint	rev
AX 712		23988	j	faint	n.s. n seen
AX 713		23991	j-k	rather faint	rev.
AX 762		24019	n.s. n seen	SV on edge faint	n.s. n seen
AX 763		24019	In n seen	faint	n.s.
AX 773		24024	rev. ? n seen faintly	faint	n.s. n seen
AX 805		24035		SV on edge poor	n.s. seen
AX 806		24035	n.s. n seen faintly	faint	n.s.
AX 812		24045	rev.	marked	In n seen
AX 862		24074	n.s. n seen	faint	rev.
AX 865		24076	n.s. {n seen faintly}		n.s.
AX 1067		24290	n.s. n seen faintly	faint	rev.
AX 1068		24290	n.s. n seen	good	In
AX 1086		24296	n.s. n seen	Double	n.s.
AX 1098		24299	{SV on edge n.s.}	faint	n.s.



S.V. Tel.					R.V. Tel.
Plate	Date	J.D.	Estimate	Remarks	Estimate
AX 1107		24300	n.s. n seen	good	In
AX 1153		24318	n.s. n seen	fair	In
AX 1164		24320	n.s. n seen	good	In
AX 1187		24326	n.s. n seen	blurred	In
AX 1196		24327	n.s. n seen	good	In
AX 1246		24357	In	trailed	j-k
AX 1250		24359	n-	good	j-k
AX 1267		24371	j	fair	j-k
AX 1274		24374	l?	faint	j-k?
AX 1275		24374	j-k	good	k-l
AX 1307		24402	i	{ brown edge trailed	n
AX 1308		24402	i	good	l
AX 1332		24411	j-k	trailed	m
AX 1364		24433	j-k	trailed	In
AX 1373		24440	j		In or n.s.
AX 1577		24626		{ brown edge trailed	n
AX 1578		24626	l	good plate	n-
AX 1617		24646	l	{ brown edge	In
AX 1624		24648	i	trailed	m
AX 1640		24651	j-k	good	In
AX 1649		24654	m	{ brown edge trailed	In
AX 1657		24656	h	good	In
AX 1671		24669		{ brown edge trailed	In
AX 1706		24683	In	good	In
AX 1735		24700	av.	good	In
AX 1746		24704	n.s. n faint	trailed	n.s.
AX 1775		24711	n.s. ...	{ brown edge trailed	In
AX 1792		24713	n.s. n seen	good	In
AX 1798		24716	n.s. n seen	fair	In



V. Tel. Plate	Date	J. D.	Estimate	Remarks	R. Y. Tel. Estimate
AX 1836		24739	n.s. n seen	trailed	
AX 1837		24739	n.s. n seen	good	In
AX 1855		24755	n.s. n seen	fair	In
AX 1862		24759	n.s. n seen	poor on edge trailed	sur.
AX 1891		24767	n.s. n seen	good	In
AX 1946		24798	n.	slightly trailed	m
AX 1969		24814	j-l	good	j
MF 4173		22159	—	poor plate	m.s. a seen
MF 4417		22156	—	fair	In
MF 4571		22195	—	fair	Low
MF 4581		22196	—	fair	Low
MF 4670		22199	—	fair	In
AM 15631		22871	n.s. ? n seen very faintly	faint	n.s.
AM 15730		23176	n.s.	faint	n.s.
AM 15782		23191	n.s. n seen faintly	faint	n
AM 15784		23191	n.s. n seen	rather faint	n
AM 15796		23194	n.s.	" "	l
AM 15797		23194	n.s. n seen	fair	l-m
AM 15803		23197	n.s. n seen faintly	faint	l-m
<del>AM 15813</del>		<del>23199</del>	<del>j-l</del>	<del>faint</del>	<del>sur.</del>
AM 15843		23209	n.s. ? n seen faintly	faint	n.s.
AM 15852		23219	off	faint	n
AM 15853		23219	n.s. n very faint	faint	sur.
AM 15868		23222	n.s. l	very faint	n.s.



S.V. Tel					R.Y. Tel
Plate	Date	J. D.	Estimate	Remarks	Estimate
AM 15878	23226	23226	n.s. l seen faintly	faint	n.s.
AM 15892	23233	23233	off	very faint	n.s. l seen
AM 15893	23233	23233	n.s. n seen faintly	faint	n.s.
AM 15910	23235	23235	res. n seen	"	n.s.
AM 15916	23236	23236	n	fair	n.s.
AM 15920	23237	23237	off	faint	n.s. n seen faintly
AM 15921	23237	23237	n	"	n.s. n seen faintly
AM 15935	23248	23248	j-k	"	n.s.
AM 15948	23250	23250	j-k	"	n.s.
AM 15970	23255	23255	f-g	"	n.s. n seen faintly
AM 15995	23267	23267	off	"	n.s.
AM 15998	23268	23268	off	"	n.s.
AM 15999	23268	23268	[e	"	n.s. very
AM 16024	23279	23279	e-f	"	n.s.
AM 16060	23306	23306	h	"	n.s. very
AM 16063	23307	23307	j - j seen	"	n.s. j seen
AM 16069	23311	23311	j-k	"	n.s. n seen
AM 16099	23337	23337	res. n seen faintly	"	n.s.
AM 16223	23533	23533	h-i	rather good	[n
AM 16237	23536	23536	h-i	"	res. n faint
AM 16263	23565	23565	n.s. j seen	foot	n.s.
AM 16288	23575	23575	off	faint	n.s. n very faint
AM 16289	23575	23575	res	low edge →	n.s. n seen
AM 16295	23576	23576	n.s. n very faint	"	n.s.
AM 16318	23610	23610	off	"	n.s. n seen faintly
AM 16320	23610	23610	n.s. n seen	rather good	n.s.
AM 16353	23640	23640	off	"	j-k (n faint)
AM 16354	23640	23640	n.s. n seen	good	j-k
AM 16361	23647	23647	n.s. n seen	fair	j-k



S.V. Tel.

Plate	Date	J.D.	Estimate	Remarks	R.V. Tel. Estimate
Am. 16365		23648	n.s. n very faint	Blurred	f-g.
A.M. 16387		23664	n.s. n " "	fair	h
Am 16393		23666	n.s.	faint	j-k
AM 16414		23673	n.s. h seen	trailed	j-k
Am 16420		23688	l l seen	fair	[l
Am 16424		23692	n.s. h seen	trailed	n.s. h seen
Am 16426		23697	f-g	trailed	n.s. n seen very faintly
B 3716		11187	n.s. n seen	On edge	—
B 3943		11220	—	trailed	l
B. 4069		11237	n.s. n seen	—	—
B 5311		11516	—	—	[n
B 6108	May 29, 1891	11882	n.s. j seen	yellow	n.s. j seen
B 6109		11882	n.s. n seen	—	n.s. n seen
B 11759		13048	n.s. n seen	faint	n.s. n seen
B 12172	Sept. 15, 1894	13087	[n	—	n.s. n seen faintly
B 12854	Mar 6, 1895	13259	n.s. h seen	faint	—
B 13583	June 4, 1895	13349	e-f	Sequence on edge	n
B 14040		13384	—	trailed	j-k
B 16572		13742	n.s.	faint	n.s. n seen faintly
B 17587	Oct 7, 1896	13840	j-k	leg on edge	—
B 17711	Oct 15, 1896	13848	m	" " "	[n
B 19176		14067	n	fair	n.s. n seen
B 20361	Sept 15, 1897	14183	n.s. n seen	—	—
B 21223	April 13, 1898	14393	—	seg. on edge	m ?
B 21282		14406	—	—	[n
B 21552		14441	[n	SV 4R Y on edge	n.s. n seen
B 21920		14536	—	" " "	[n
B 22072	Oct 22, 1898	14585	n.s. n seen	—	—



S. V. Tel.					R. Y. Tel.
Plate	Date	J. D.	Estimate	Remarks.	Estimate
B 22480	Apr. 5, 1899	14750	—		n.s. n seen
B 23060		14822	—		m
B 23065		14822	n.s. n seen		—
B 23073X	June 17, 1899	14823	n.s. n seen	leg. on edge	m ?
B 23534	July 18, 1899	14854	—		m ?
B 24374		14941	—		[I] n n seen
B 24413	Oct 14, 1899	14942	f-g		—
B 25178		15134	—		[n
B 25342		15158	—		n.s. n seen
B 25530		15175	—		n.s. n seen
B 26082		15275	—		[n
B 26084	Sept 12, 1900	15275	n.s. n seen		m
B 25497X		15169	e	good	n.s. n seen
B 26296	Sept 25, 1900	15288	n.s. n seen?		—
B 27563	June 5, 1901	15541	ans. n seen		
B 28567	Sept 20, 1901	15648	j-l	good	—
B 28623		15661	—	good	n.s. n seen
B 29448	April 26, 1902	15866	—		n.s. n seen
B 29606	May 2, 1902	15872	—		n.s. or n.s. n seen
B 29988X	June 10, 1902	15911	—		n.s. n seen
B 30500		15962	—	On edge	n.s. n seen
B 31954		16269	j-l	R. Y. on edge	—
B 33585		16604	—		n.s. n seen
B 34025		16640	—		n.s. n seen
B 37696		17756	—		[I] n n seen
B 41502		18849	[n		[I] n
B 42310		19176	[n		[n
B 42441		19225	—	very faint	n.s. n seen very faint











24

X Sub

Marked out X 627

Wise York

Arbitrary  
Plate

sequence marked out X 627

Date

J. D.

Estimate

Remarks.

Estimate

AX 578	June 2, 1924	23939	i-j	Good	d-e h
AX 616	June 23, 1924	23960	i	Slightly trailed	d-e h
AX 627	June 25, 1924	23962	g-h	Good	d-e g-h
AX 653	June 30, 1924	23967	g-h	Slightly trailed	e h
AX 684		23972	f	Good	d-e h
AX 714		23991	Le	Slightly trailed	e g-h
AX 758		24017	e	"	f e f
AX 768		24021	d-e	Good	f g d-e
AX 800		24034	e-f		g-h e
AX 807		24035	e f		g [e
AX 864		24075	i-f	Good	d-e h-i
AX 866		24076	j	"	e h-i
AX 889		24086	k	"	d-e i
AX 906		24089	j-k	faint	d i
AX 912		24091	j-k	"	d i
AX 1069		24290	h-i		d g
AX 1165		24320	j-k	Good	d-e f
AX 1174		24324	k-l	Good	e e
AX 1197		24327	c		d e
AX 1251		24359	c		d f-g
AX 1255		24360	c	Good	e f
AX 1276		24374	j	excellent	f-g g-h
AX 1299		24391	h	trailed	f-g i
AX 1309		24402	g-h		g i-j
AX 1333		24411	f	Good	g j
AX 1365		24433	h	"	h-i j
AX 1374		24440	a	"	g l
AX 1641		24651	b	"	f? d-e



X <sup>2nd</sup>					W <sup>2nd</sup>	Y <sup>2nd</sup>
Plate	Date	J.D.	Estimate	Remarks	Estimate	
AX 1654		24655	a	Good	e	e
AX 1700		24681	B	"	e	h
AX 1707		24683	a	"	e	h-i
AX 1765		24709	d		c	j
AX 1776		24711	a	"	d	j
AX 1794		24713	[d	"	d	j-k
AX 1828		24733	h	"	e	[a
AX 1838		24739	h-i	"	[e	l
AX 1878		24763	[k	"	g-h	l
AX 1892		24767	[k	defect ->	g-h	[l
AX 1915		24783	[l	Good	h	l
AX 1918		24786	l	"	h	[l
AX 1920		24787	[l	"	g-h	[l
AX 1947		24798	[l		g-h	l
AX 1972		24815	l		g-g	l
AX 2045		25181	f-g		e	h-i
AX 2059		25196	i		d	h



26

X Ind.  
Plate

Date

J. D.

Estimate

Remarks

Wrd Yrb

Estimate

AM 15666	22934	n.s. e seen	Poor	c	n.s.
AM 15666	23192	n.s. j seen	"	f	i
AM 15804	23197	n.s. j seen	faint	f	n.s.
AM 15821	23205	n.s. h seen	"	g	n.s.
AM 15887	23232	n.s. h seen	"	g	n.s.
AM 15904	23234	n.s. i seen	"	f-g	n.s.
AM 15912	23235	n.s. i seen	"	f-g	n.s.
AM 15913	23235	n.s. i seen	"	f-g	n.s.
AM 15941	23249	i i seen faintly	"	f	n.s.
AM 15943	23249	i i seen very faintly	"	f	n.s.
AM 15949	23250	j seen	"	e	seen
AM 15971	23255	n.s. i seen faintly	"	f	n.s.
AM 16025	23279	h h seen faintly	"	e-f	n.s.
AM 16033	23282	n.s. g seen	"	e	n.s.?
AM 16070	23311	B	Good	d	j faint
AM 16072	23312	B	"	d-e	i faint
AM 16096	23335	a	"	c	g
AM 16062	23306	a	"	d-e	i seen faint
AM 16109	23339	b	"	b	fg
AM 16139	23377	i i seen faintly	Trailer	e-f	g-h
AM 16146	23388	-	Superficial	-	g
AM 16322	23610	h-i	Excellent	d	i
AM 16338	23618	i	Trailer	e	h-i
AM 16355	23640	n.s. j seen		f	h
AM 16366	23648	n.s. j seen		f-g	h
AM 16377	23650	seen. j seen	Slightly trailed	f	h
AM 16405	23668	n.s. j seen		d-e	h
AM 16410	23670	n.s. i seen		Id	f-g
AM 16427	23697	n.s. h seen	Trailer	d	e-f



X Ind

Plate

AN 16431

Date

J. D.

23699

Estimate

Li i seen fty

Remarks

Trailed

W Ind Y Ind

Estimate

d

e



X Ind.

Plate

Date

g. D.

Estimate

Remarks

W ind Y d

Estimate

B 10048

12676

b

Good

h

—

B 13948

13378

b

Good  
You edge

b

e?

B 25761

15231

j

Fairly

f

i-j?

B 26138

15277

sus. &amp; very v. apt.

fairly

f-g

n.s.

B 27667

15550

b

Fairly

e

?

B 28314

15621

l

c

n.s. beam

B 30351

15943

l

c-d

n.s. beam

B 11249

12971

i

W on edge

e?

k

B 13917

13377

b

e?

d

B 22959

14806

sus. left

e?

i

B 23549

14854

g

f?

e

B 24292

14930

c

e?

h

B 25635

15198

f-g

f?

d

B 27954

15589

B

d?

j-k

B 30224

15928

l

f?

l

B 30503

15962

j-l

e?

l

B 32077

16296

b

d?

i

B 34734

16713

l

g?

e-f

B 41694

18871

h-i

h

h-i



1925phae.proj.2482W

X Ind.  
Plate

Date

J.D.

Estimate

Remarks

W Ind.  
Estimate











Y Paw

Marked on AX 1894

V Oct

Arbitrary sequence marked on AX 1894

Plate	Date	J. D.	Estimate	Remarks	Estimate
? AX 578		23939	b	Trailed became not ad center	k
? AX 627		23962	b]		[m
AX 647		23965	a	Good	m
? AX 684		23972	E		sw m seen
AX 734		23997	a	Good	[m
AX 764		24019	E	Good	[m
? AX 768		24021	E		n.s. m seen
? AX 800		24034	b		n.s. m seen fly
AX 801		24034	E	Good	[m
? AX 864		24075	E		n.s. m seen
? AX 889		24086	b		n.s. m seen
AX 902		24088	a	Good	sw m seen fly
? AX 1174		24324	E		sw m seen
AX 1175		24324	b	Good	[m
? AX 1255		24360	b		sw m seen
AX 1256		24360	E	Good	[m
? AX 1299		24391	E		n.s. m seen fly
AX 1326		24406	b	Good	m
? AX 1333		24411	E		sw m seen
? AX 1365		24433	b		sw m seen
? AX 1413		24495	c	Dark	g-b
? AX 1654		24655	b		sw m seen fly
AX 1659		24658	b-c	Good	[m
? AX 1707		24683	E		sw m seen
AX 1715		24686	C	Good	sw m seen
? AX 1776		24711	E		sw m seen
AX 1777		24711	c	Good	sw m seen
AX 1825		24732	c	Good	sw m seen



Y Pav Plate	Date	J.D	Estimate	Remarks	V O.T. Estimate
? AX 1828		24733	E		ans m sen
? AX 1878		24763	b		h-i
AX 1894		24767	c	Good	h-i
? AX 1918		24786	c		h-i
? AX 1920		24787	b		h
? AX 1947		24798	b-c		h-i
AX 1948		24798	E	Good	h-i
AX 2033		25177	a	Good	[m
AX 2084		25210	a)	Good	[m



34

Y Pav

Plate

Date

J. D.

Estimate

Remarks

V Oct

Estimate

AM 15620		22868	a-b = E	faint	n.s. f seen
AM 15789		23192	a-b = E		n.s. i seen
AM 15804		23197	a-b = E		n.s. i seen
AM 15889		23232	a-b = E	Good	n.s. i seen
AM 15904		23234	a-b = E		n.s. f seen
AM 15913		23235	a-b = E		n.s. i seen
AM 15943		23249	a-b = E		n.s. j seen
AM 15944		23249	a-b = E		n.s. k seen
AM 15949		23250	a		n.s. l seen
AM 15961		23253	[a		i i seen
AM 16004		23269	a		n.s. j seen
AM 16033		23282	[a		n.s. g seen
AM 16072		23312	a		n.s. h seen
AM 16076		23317	a		—
AM 16077		23317	a-b = E		g
AM 16109		23339	a-b = E		i
AM 16115		23341	[a		g-h
AM 16139		23377	a-b = E		n.s. k seen
AM 16282		23573	[a]		n.s. j seen
AM 16322		23610	a		i
AM 16366		23648	a-b = E		m
AM 16367		23648	a-b = E		n.s. j seen
AM 16377		23650	a-b = E		m
AM 16401		23667	a		n.s. k seen
AM 16405		23668	a-b = E		n.s. i seen
AM 16431		23699	a-b = E		n.s. j seen
AM 16439		23702	[a]		n.s. i seen
AM 16494		23768	[a]		n.s. j seen



Y Par  
Plate

Date

T. D.

Estimate

Remarks

V Oct.  
Estimate



Y Par

Plate

B 16242  
B 20815

B 23180

B 23229

B 25518

B 25525

B 25977

B 26061

B 26492

B 27943

B 28321

B 31895

B 3445

B 34694

Date

J.D.

13721  
14251

14832

14835

15172

15173

15267

15274

15318

15588

15621

16267

16684

16711

Estimate

Remarks

V Oct

Estimate

n.s. m seen  
n.s. m seen

m

[m

[m

n.s. m seen

i-j

j

m

m

n.s. m seen

n.s.

g-h

m

B 4302

B 17875

B 19357

B 21535

B 22941

B 25667

B 26213

B 27454

B 27847

B 31847

B 37992

11274

13876

14078

14438

14805

15203

15281

15532

15576

16254

17804

n.s. m seen

sun. m seen

h

n.s. m seen

n.s. m seen

n.s. m seen

n.s. m seen

g-h

l

n.s. m seen

m



1925phae.proj.2462N

Y Par  
Plate

Date

J. D.

Estimate

Remarks

V<sub>05</sub>  
Estimate

B 30156

15925

c

B 30244

15929

b-j

B 30323

15940

b-j

B 31839

16254

b-j

B 31865

16257

b-j

B 34443

16684

b-j

B 34495

16685

b-j

B 32557

16359

b-j

B 36116

16991

b-c

B 36562

17067

b-j

B 39147

18102

E

B 40467

18483

b-j

B 41542

18851

E











W mic marked on AX 2045 (Page 57 just picture) U. Gravis

Arbitrary sequence marked on AX 2045

Plate	Date	J.D	Estimate	Remarks	Estimate
AX 605		23949	n.s. i seen	trailed	g 11.10
AX 616		23960	n.s.	Good	g 11.10
AX 635		23963	n.s. k seen	trailed	g 11.10
AX 653		23967	n.s. k seen	Good	g 11.10
AX 666		23969	n.s. j seen	trailed	j-g 11.00
AX 714		23991	n.s. j seen	Good	j-g 11.10
AX 727		23993	n.s. j seen	"	j-k <sup>13.86</sup> 11.30
AX 758		24017	n.s. j seen	"	e-f 10.9
AX 795		24033	n.s. j seen	"	f-g 11.0
AX 807		24035	n.s. j seen	"	f-g 11.05
AX 866		24076	n.s. j seen	"	h-i 12.00
AX 870		24079	n.s. i seen	trailed	g 11.10
AX 906		24089	i-j	Good	g 11.10
AX 912		24091	i-j	"	i-j 12.40
AX 1069		24290	n.s. j seen	"	j-k <sup>13.50</sup> 11.30
AX 1095		24298	n.s. j seen	trailed	g 11.10
AX 1148		24317	n.s. j seen	Good	e-f 11.0
AX 1165		24320	k	"	e-f 10.9
AX 1182		24325	n.s. k seen	trailed	f 10.94
AX 1197		24327	j-k	Good	e-f 10.9
AX 1251		24359	g-h	"	g-h 11.18
AX 1276		24374	g-h	"	f 10.94
AX 1309		24402	i-j	"	f 10.94
AX 1318		24404	i-j	trailed	g-h 11.18
AX 1362		24432	n.s.	trailed	j-h 11.18
AX 1374		24440	k k ft	Good	g 11.10
AX 1641		24651	i-j	"	i-j 12.05
AX 1655		24655	i-j	trailed	j-g 11.0



W mic

Plate	Date	J.D	Estimate	Remarks	U Grabs Estimate
AX1700		24681	j-k	Good	e-f 10.9
AX1710		24684	n.s. j seen	Healed	g 11.10
AX1765		24709	h	Good	g 11.10
AX1766		24709	n.s. j seen	Healed	g-g 11.0
AX1794		24713	n.s. k seen	Good	g-h 11.18
AX1819		93966	10 45.7 +16 35	F8	g-g 11.0
AX1838		2175		855	g-g 10.9
AX1892					g-h 11.18
AX1900					f-g 11.0
AX1915					i-k 13.0
AX1954					g-h 11.18
AX1972					i 12.72
AX2010					g-h 11.18
AX2017					f-g 11.0
AX2059					g 11.10
AX2071		25202	j	Healed	g 11.10
AX2045		25181	i-j		f 10.94
AX578		23939		On edge	f 10.94
AX627		23962		"	f-g 11.0
AX684		23972		"	f-g 10.94
AX768		24021		"	f-g "
AX800		24034		"	f-g "
AX864		24075		"	f-g 11.0
AX889		24086	i-j		f-g "
AX1174		24324			g-h 11.70
AX1255		24360	h-i		g 11.10



W mic					U Grains
Plate	Date	J.D	Estimate	Remarks	Estimate
AX1700		24681	j-k	Good	e-f 10.9
AX1710		24684	n.s. j seen	Trailed	g 11.10
AX1765		24709	h	Good	g 11.10
AX1766		24709	n.s. j seen	Trailed	h-g 11.0
AX1794		24713	n.s. k seen	Good	g-h 11.18
AX1819		24731	n.s. j seen	Trailed	f-g 11.0
AX1838		24739	n.s. k seen	Good	f 10.9
AX1892		24767	n.s. j seen	"	g-h 11.18
AX1900		24769	n.s. j seen	Trailed	f-g 11.0
AX1915		24783	n.s. j seen	Good	j-k <sup>1386</sup> 11.30
AX1954		24800	n.s. j seen	Trailed	g-h 11.18
AX1972		24815	n.s. j seen	Good	j 12.72
AX2010		25152	i-j	Trailed	g-h 11.18
AX2017		25154	i-j	"	f-g 11.0
AX2059		25196	j-k	Good	g 11.10
AX2071		25202	j	Trailed	g 11.10
AX2045		25181	i-j		f 10.94
AX578		23939		On edge	f 10.94
AX627		23962		"	f-g 11.0
AX684		23972		"	f 10.94
AX768		24021		"	f "
AX800		24034		"	f "
AX864		24075		"	f-g 11.0
AX889		24086	i-j	"	f-g "
AX1174		24324		"	g-h 11.70
AX1255		24360	h-i	"	g 11.10



42

W mic  
Plate

Date

J. D

Estimate

Remarks

U Gravis

Estimate

AX 1299	24391	i		g-h 11.18
AX 1333	24411	j		f-g 11.0
AX 1365	24433			f-g 11.0
AX 1654	24655	i-j		g 11.10
AX 1707	24683	n.s.		f-g 11.0
AX 1776	24711	"		g 10.94
AX 1828	24733	"		h-f 10.9
AX 1878	24763	"		f-g 11.0
AX 1918	24786	"		g 10.94
AX 1920	24787	"		g 10.94
AX 1947	24798	"		i-j 12.70

MF 2631	21864	n.s. j seen		g-h 11.18
MF 2707	21866	n.s. j seen		g-h "
MF 2719	21867	n.s. i seen		h 11.10
MF 2790	21870	n.s. i seen		h "
MF 2830	21871			g 11.10
MF 2895	21875			g-h 11.18
MF 4715	22200			g 10.94
MF 6689	22548			"
MF 7028	22577			f-g 11.0



W. Wier

Plate

Date

J. D

Estimate

Remarks

U. Gravis

Estimate

8	AM 15821	23205	n.s. g seen	Faint	n.s. <sup>msc</sup> 11.10
0	AM 15822	23205	n.s. f seen	"	n.s. g seen <sup>msc</sup> 10.94
0	AM 15887	23232	n.s. i seen	"	n.s. f seen
10	AM 15912	23235	n.s. i seen	"	f-g 11.0
0	AM 15941	23249	n.s. i seen	"	g-h 11.18
24	AM 15950	23250	n.s. g seen	"	g 11.10
9	AM 15971	23255	n.s. g seen	"	g g seen <sup>msc</sup> 11.10
0	AM 16025	23279	n.s. g seen	"	f-g 11.0
24	AM 16062	23306	n.s. g seen	"	f-g 11.0
24	AM 16070	23311	i	"	f 10.94
10	AM 16100	23337	n.s. i seen	"	h 11.26
	AM 16146	23388	n.s. h seen	"	g-h 11.26
	AM 16323	23610	i	"	f 10.94
	AM 16338	23618	i-j	"	g 11.10
18	AM 16355	23640	h	"	f-g 11.0
	AM 16389	23664	n.s. h seen	"	g <sup>msc</sup> 11.10
10	AM 16410	23670	n.s. i seen	"	n.s. h seen <sup>msc</sup> 11.26
	AM 16427	23697	n.s. g seen	"	g 11.10
0	AM 16432	23699	n.s. h seen	"	g 11.10
18					Eg 11.15
24					or less



W mic

Plate	Date	J D	Estimate	Remarks	U Gruis Estimate
B 3846	July 18, 1889	11202	j-k		j-k <sup>1386</sup> 113.0
B 5409	June 12, 1890	11531	-		j-k <sup>1386</sup> 113.0
B 11250	May 22, 1894	12971	[j]		f-g 11.0
B 13916	July 2, 1895	13377	n.s. j seen		g-h 11.18
B 13947	July 3, 1895	13378	n.s. j seen		h-i 11.00
B 16812		13752	h-i		j 12.02
B 22960		14806	i		h-i 11.00
B 26259		15283	e		h-i 10.94
B 26617		15341	n.s. i seen		i 11.00
B 26822		15376	n.s. k seen		h-i 11.20
B 27569		15541	i		[h 11.26
B 29673		15884	n.s. j seen		h-i 11.10
B 30497		15961	n.s. k seen		h-i 11.10
B 32067		16295	i		[h 11.10
B 32083		16297	j		g 11.13
B 37938		17795	n.s. k seen		e-j 12.02
B 40673		18515	n.s. j seen		h 11.21
B 41800		18907	i-j		h 11.26
B 25636		15198	n.s. j seen		n.s. 12.72 n.s. j seen



W. W. W.

Plate	Date	J.D.	Estimate	Remarks	U. W. W. Estimate
AM 56		14870		Slide 2838	f-g 11.0
AM 76		14874			f-g 11.0
AM 109		14891			f-g 11.10
AM 126		14898			f-g 11.0
AM 200		14938			f-g 11.10
AM 240		14953			f-g 11.0
AM 248		14954			f-g 11.0
AM 516		15198			f-g 11.0
AM 540		15224			f-g 11.10
AM 567		15231			f-g 11.10
AM 605		15263			f-g 11.18
AM 834		15542			f-g 11.18
AM 843		15543			f-g 11.18
AM 963		15603			f-g 11.0
AM 1074		15659		Slide 159	f-g 11.18
AM 1220		15869		for	f-g 11.10
AM 1306		15906			f-g 11.10
AM 1337		15912			f-g 11.10
AM 1355		15914			f-g 11.18
AM 1391		15926			f-g 11.18
AM 1496		15973		omit	f-g 11.18
AM 1633		16033			f-g 11.18
AM 1655		16045			f-g 11.18
AM 1751		16093			f-g 11.18
AM 1903		16239			f-g 11.18
AM 1982		16267			f-g 11.18
AM 2009		16272			f-g 11.18
AM 2063		16288			f-g 11.10



W mis Plate	Date	J.D.	Estimate	Remarks	Ugruis Estimate
A.M. 2170		16331			g 11.10
AM 2202		16340			g-h 11.18
AM 2213		16344			g-g 11.0
AM 2230		16355			g-g 11.0
AM 2302		16396			g-g 12.78
AM 2317		16398			h-i 11.40
AM 2342		16408			g 11.10
AM 2404		16461			g 11.10
AM 2558		16589			g-g 11.0
AM 2647		16613			h 11.26
AM 2704		16635			g 11.15
AM 2779		16655			g 11.10
AM 2847		16682			g 11.10
AM 2899		16694			g 11.10
AM 2966		16712			g 12.40
AM 2980		16715			g 11.15
AM 3013		16727			g 11.26
AM 3076		16752			g 10.94
AM 3101		16755			g 11.15
AM 3130		16766			g 10.94
AM 3195		16790			g 11.10
AM 3240		16802			g 11.10
AM 3486		16963		llh 3029	g 10.94
AM 3539		16979			g-g 11.0
AM 3590		17001			g 11.10
AM 3713		17008			g-h 11.18
AM 3777		17068			g 10.94
AM 3886		17105			g 11.0
AM 3930		17124			g 11.10



W. Mies				U. Genie	
Plate	Date	J. D	Estimate	Remarks	Estimate
AM 3990		17174			f 10.98
AM 4177		17325			f 10.94
AM 4252		17354			f-g 11.0
AM 4284		17371		Slide 3042 poor	f-g 11.0
AM 4336		17380			f-g 11.0
AM 4374		17401			f-g 10.94
AM 4459		17429			f-g 10.94
AM 4521		17446			f-g 10.94
AM 4543		17451			h? nov 1202
AM 4604		17489			f-g 11.0
AM 4657		17504			g 11.10
AM 4685		17528			g 11.10
AM 4781		17688			f-g 11.0
AM 4854		17718			f-g 11.0
AM 4880		17727		Slide 3067	f-g 11.10
AM 4897		17730			f-g 11.0
AM 4914		17735			f-g 10.94
AM 4974		17760			f-g 11.0
AM 5066		17803			f-g 10.94
AM 5092		17813			f-g 10.94
AM 5111		17819			f-g 10.94
AM 5209		17865			g-h 11.18
AM 5234		17880			g 11.10
AM 5477		18081		Slide 2987 poor	g 11.10
AM 5530		18098			g 11.10
AM 5608		18119			f-g 11.0
AM 5658		18133			f-g 11.0
AM 5710		18155	i		f-g 10.94
AM 5728		18158	[i		h 11.26



W mic  
Plate

Date

J D

Estimate

Remarks

U gruis

Estimate

Am 5816

18198

g-h 11.18

Am 5824

18200

f 10.94

Am 5883

18242

fg 11.10

Am 6098

18435

g 11.10

Am 6171

18453

n. 5 g seen<sup>ns</sup> 11.10

Am 6266

18479

g 11.10

Am 6284

18482

g-g 11.0

Am 6304

18487

i<sup>ns</sup> 1202

Am 6370

18505

f-g 11.0

Am 6436

18523

f-g 11.0

Am 6476

18535

fg 11.10

Am 6494

18539

g-g 11.0

Am 6577

18561

fg 11.10

Am 6678

18596

g 11.10

Am 6690

18600

j 12.70

Am 6713

18604

f 10.94

Am 7185

18887

slide 2869

f-g 11.0

Am 7223

18911

f-g 11.0

Am 7325

18956

g 11.10

Am 10767

20688

fg 11.10

Am 10783

20690

f-g 11.0

Am 10906

20708

g 11.10

Am 11105

20749

g-h 11.18

Am 11123

20751

g-g 11.0

Am 11158

20755

n. 5 i seen<sup>ns</sup> 1202

Am 11169

20756

g 11.10

Am 11404

20803

fg 11.10

Am 11413

20805

f-g 11.0

Am 12109

21046

leaf 10.9



	Plate	Date	J. D	Remarks	V grains Estimate
8	AM 12154		21052		g-h 11.18
4	AM 12249		21068		g-g 11.0
0	AM 12429		21125		g-g 10.94
0	AM 12463		21127		g-g 11.0
11.10	AM 12486		21129		g-g 10.9
0	AM 12524		21136		g-g 11.0
0	AM 12781		21187		g-g 11.0
2	AM 13450		21438		g-g 11.0
0	AM 14239		21805		g-g 11.0
0	AM 14377		21843		g-g 11.0
0	AM 14435		21862		g-g 11.0
0	AM 14741		22110		g-g 11.10
0	AM 15025		22229	slide 587	g-g 11.0
0	AM 15307		22520		g 11.10
10	AM 15715		22574		
94	AM 2358		15689		g-g 10.94
0	AM 10694		20666		g-g 11.10
0	AM 10957		20713		g-g 10.94
10	AM 10978		20721		g-g 11.0
0	AM 11068		20728		n.s. g seen 11.10
0	AM 11294		20774		Li 12.3
0	AM 11702		20994		g 10.94
8	AM 12047		21037		g brighter than 11.0
	AM 12057		21038		g-g 11.0
202	AM 12080		21043		g-g 11.0
0	AM 12380		21102		g-g 10.94
0	AM 12395		21105		g-g 10.94
0	AM 12583		21151		g-g 11.0
9	AM 12615		21155		g-g 10.94



W. mic					U. grains
Plate	Date	J D	Estimate	Remarks	Estimate
AM 12627		21156			f-g 11.0
AM 13024		21335			f-g 11.0
AM 13542		21468			f-g 10.94
AM 13678		21516			f-g 10.94
AM 14248		21807			f-g 10.94
AM 14256		21809			f-g 10.94
AM 14277		21816		11 reduction sheets 5 more to do 10 in all	f-g 10.94
AM 14355		21834			f-g 11.0
AM 14366		21836			f-g 10.94
AM 14474		21869			f-g 11.0
AM 14490		21871			f-g 11.0
AM 14793		22133			f-g 11.10
AM 14882		22172			f-g 10.94
AM 15393		22544			f-g 11.0
You look the minima to here & W. 0.001 to here.					
AM 17		14862			f-g 11.0
AM 98		14878			f-g 11.0
AM 130		14899			f-g 10.9
AM 581		15234			f-g 10.94
AM 632		15267			f-g 10.94
AM 702		15325			f-g 10.94
AM 820		15533			e-y 10.9
AM 899		15571			f-g 10.94
AM 939		15590			f-g 10.9
AM 947		15591			f-g 10.94
AM 1038		15633			f-g 11.0
AM 1253		15885			f-g 11.0
AM 1280		15897			f-g 10.94
AM 1450		15941			f-g 11.0



W. mii		J. D.	Estimate	Remarks	U. g. mii	
Plate	Date				Estimate	
Am 1677		16061			f	10.94
Am 1938		16249			g	11.10
4 Am 2086		16297			g	11.10
4 Am 2102		16302			h-i	11.70
4 Am 2123		16310			e-f	10.9
4 Am 2138		16312			e-f	10.9
4 Am 2246		16359			e-f	10.9
Am 2276		16375			e-f	10.9
4 Am 2291		16379			msc 11.26	
Am 2592		16603			f	10.94
Am 2628		16607			f] bter	10.9
Am 2715		16636			f	10.94
4 Am 2727		16639			f-g	11.0
Am 2780		16655			f] bter	10.9
Am 2817		16668			f] ...	10.9
Am 2870		16684			f-g	11.0
Am 2927		16698			f-g	10.94
9 Am 2974		16713			f	10.94
4 Am 3158		16783			f	10.94
4 Am 3483		16962			e-f	10.9
4 Am 3516		16976			e-f	10.9
9 Am 3601		17004			f	10.94
4 Am 3633		17010			e-f	10.9
0.9 Am 3649		17018			f] bter	10.9
94 Am 3786		17069			f-g	11.0
0 Am 3803		17076			f	10.94
0 Am 3844		17094			f	10.94
94 Am 3875		17098			e-f	10.9
1.0 Am 3937		17125			e-f	10.9



W mic plate	Date	J. D	Estimate	Remarks	U Grav. Estimate
AM 4304		17 375			f 10.94
AM 4375		17401			f 10.94
AM 4397		17404			f 10.9
AM 4481		17432			n.s. <sup>ns</sup> 12.02
AM 4930		17745			f 10.94
AM 4957		17758			le-f 10.9
AM 5022		17786			f 10.9
AM 5042		17792			f 10.9
AM 5122		17822			f-g 11.0
AM 5157		17836			f 10.9
AM 5216		17866			f 10.94
AM 5478		18081			fg 11.10
AM 5493		18087			f 10.9
AM 5666		18144			f 10.9
AM 5691		18149			f 10.94
AM 5734		18159			f 10.9
AM 5832		18201			f 10.94
AM 5886		18248			f 10.94
AM 6089		18434			f 10.94
AM 6315		18494			f 10.9
AM 6394		18510			f 10.94
AM 6516		18544			f 10.94
AM 6595		18567			f 10.94
AM 6607		18569			f 10.94
AM 6695		18601.512			f 10.94
AM 6755		18616			f 10.94
AM 6929		18818			le-f 10.9
AM 6958		18822			ef 10.9
AM 7064		18855			f 10.9



	W Min.					Ugris
	Plate	Date	J.D	Estimate	Remarks	Estimate
4	AM 7464		19205			f-g 11.0
4	AM 7550		19233			f-g 10.94
9	AM 7654		19253			f-g 11.0
2.02	AM 7679		19264			f-g 11.10
4	AM 8310		19562			<del>f-g</del> f-h
9	AM 8398		19589			f-g 11.0
9	AM 8584		19646			f-g 10.94
9	AM 9242		19973			f-g 10.9
0	AM 9353		20000			f-g 10.98
9	AM 9899		20308			f-g 10.9
94	AM 9992		20340			f-g 10.94
10	AM 10101		20384			f-g 10.9
9	AM 10193		20421			f-g 11.0
9	AM 10238		20434			f-g 10.9
94	AM 10263		20444			f-g 10.94
9	AM 10271		20447			f-g 10.9
94	AM 11175		20757			f-g 10.94
94	AM 14396		21847			f-g 11.0
4	AM 14400		21851			f-g 10.94
9	AM 15306		22520			f-g 10.98
4	AM 15483		22578			f-g 11.10
4	AM 675		15283			f-g 11.0
4	AM 10932		20711			f-g 11.10
4	AM 11307		20775			f-g 11.10
4	AM 11349		20779			f-g 11.10
94	AM 12033		21035			f-g 11.0
9	AM 12035		21035			f-g 11.0
9	AM 12046		21037			f-g 11.0
9	AM 12056		21038			f-g 11.0



54

W mic					U gruis
Plate	Date	F. D	Estimate	Remarks	Estimate
AM 12311		21081			g 11.10
AM 12351		21094			g-g 11.0
AM 12388		21104			g 10.98
AM 12394		21105			g-g 11.0
AM 12593		21153			g 11.10
AM 13023		21335			g-g 11.0
AM 13519		21456			g 11.10
AM 13524		21457			g 11.10
AM 13534		21465		377 stars there.	g 11.10



Plate Date

S.D

Estimate

Remarks

Uguis  
Estimate



56

Period is

Transferred from  
log on AX 2045

V Genis

1.88048 (Hertzsprung)

Plate	J D	mag
MT 15022	2426303.293	f-h 11.10
15719	26540.519	
15724	26542.565	f-h 11.10
15939	572.464	f-h 11.10
15955	573.536	h 11.26
16026	593.252	h 11.26
16028	593.316	f-h 11.10
16030	381	f-h 11.10
16032	446	h 11.26
16034	513	f-h 11.10
16065	598.436	h 11.26
16130	627.372	h 11.26
16133	628.361	(f-h) 13.0
16137	629.368	h 11.26
16163	657.251	f-h 11.10
16183	659.272	f-h 11.10
16269	685.267	

Better omit  
g  
g appears  
to be a  
variable  
See MT  
12430 for mag  
of MT 16030  
from

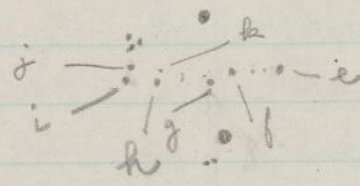
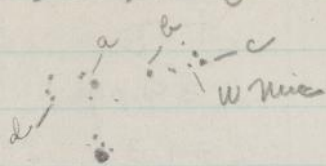
1386 1376  
anyway

See page 212 for mag. det.

MT 12399 25528.244 j-h 13.86 13.90



Original seg for U Geminis  
marked on AX 2045  
North



U Geminis

South



X mic Marked on AX901 and B 22958

Arbitrary sequence marked on AX901 and B 22958

Plate	Date	JD	Estimate	Remarks
AX 536		23919	i-j	
AX 567		23934	kj	
AX 602		23947	[k	
AX 603		23949	[k	
AX 604		23949	n.s. k seen	
AX 605		23949	k	
AX 616		23960	n.s. j seen	
AX 635		23963	[k	
AX 641		23964	n.s. k seen	
AX 653		23967	n.s. k seen	
AX 665		23969	n.s. k seen	
AX 666		23969	n.s. k seen	
AX 679		23971	n.s. k seen	
AX 714		23991	n.s. k seen	
AX 726		23993	n.s. k seen	
AX 727		23993	n.s. k seen	
AX 758		24017	n.s. k seen	
AX 761		24018	n.s. k seen	
AX 794		24033	n.s. k seen	
AX 795		24033	n.s. k seen	
AX 866		24076	[k]	
AX 872		24081	i	
AX 901		24088	i	
AX 906		24089	i	
AX 912		24091	h-i	
AX 1069		24290	[k	
AX 1081		24294	n.s. k seen	
AX 1094		24298	[k	
AX 1095		24298	[k	



X Min Plate	Date	J. D	Estimate	Remarks
AX 1147		24317	j-k	
AX 1148		24317	j-k	
AX 1165		24320	j	
AX 1169		24322	j	
AX 1181		24325	i-j	
AX 1182		24325	i-j	
AX 1197		24327	i-j	
AX 1205		24328	[i]	
AX 1226		24352	e]	
AX 1247		24357	e]	
AX 1251		24359	e]	
AX 1276		24374	j	
AX 1285		24378	j	
AX 1290		24381	j-g	
AX 1306		24401	i-j	
AX 1309		24402	i-j?	
AX 1317		24404	j	
AX 1318		24404	j	
AX 1362		24432	[k	
AX 1374		24440	n.s. k seen	
AX 1622		24647	j	
AX 1641		24651	j	
AX 1655		24655	k	
AX 1700		24681	[Lk	
AX 1701		24681	n.s. k seen	
AX 1709		24684	[Lk	
AX 1710		24684	n.s. k seen	
AX 1747		24704	n.s. k seen	
AX 1765		24709	n.s. k seen	



X Min Plate	Date	F.D	Estimate	Remarks
AX 1766		24709	n.s. k seen	
AX 1771		24710	n.s. k seen	
AX 1793		24713	n.s. k seen	
AX 1794		24713	n.s. k seen	
AX 1808		24728	n.s. k seen	
AX 1818		24731	n.s. k seen	
AX 1819		24731	n.s. k seen	
AX 1831		24735	n.s. k seen	
AX 1838		24739	n.s. k seen	
AX 1848		24745	n.s. k seen	
AX 1857		24755	n.s. k seen	
AX 1870		24761	n.s. k seen	
AX 1892		24767	[L] k	
AX 1899		24769	n.s. k seen	
AX 1900		24769	n.s. k seen	
AX 1907		24772	[L] k	
AX 1915		24783	[k]	
AX 1942		24794	k	
AX 1953		24800	[L]	
AX 1954		24800	[L]	
AX 1970		24814	[L]	
AX 1972		24815	[L]	
AX 2009		25152	k	
AX 2010		25152	[k]	
AX 2016		25154	[k]	
AX 2017		25154	[k]	
AX 2032		25177	[k]	
AX 2037		25179	[k]	
AX 2042		25180	[k]	



X mic

Plate	Date	J.D	Estimate	Remarks
AX 2045		25181	IR	
AX 2059		25196	n.s. k seen	
AX 2060		25197	n.s. k seen	
AX 2071		25202	n.s. k seen	

AM 675	15283	e]	
AM 10932	20711	n.s. j seen	
AM 11307	20775	e	
AM 11349	20779	e-f	
AM 11918	21022	f	
AM 11934	21024	e-f	
AM 12033	21035	[g	
AM 12035	21035	g	
AM 12046	21037	[g	
AM 12056	21038	g	
AM 12311	21081	n.s. e seen	
AM 12357	21094	n.s. k seen	
AM 12388	21104	n.s. j seen	
AM 12394	21105	n.s. c seen	
AM 12589	21152	n.s. j seen	
AM 12593	21153	n.s. c seen	
AM 12994	21332	n.s. k seen	
AM 13023	21335	n.s. j seen	
AM 13519	21456	g	



62

X mic Plate	Date	F.D	Estimate	Remarks
AM 13524		21457	g	
AM 13534		21465	e	
AM 15825		23205	i	
AM 15822		23205	i-j?	
AM 15887		23232	n.s. i seen	
AM 15912		23235	n.s. i seen	
AM 15941		23249	n.s. j seen	
AM 15950		23250	n.s. i seen	
AM 16025		23279	n.s. i seen	
AM 16062		23306	n.s. i seen	
AM 16070		23311	n.s. i seen	
AM 16096		23335	n.s. i seen	
AM 16100		23337	n.s. i seen	
AM 16146		23388	e]	
AM 16323		23610	p-g	
AM 16338		23618	e]	
AM 16355		23640	e-d	
AM 16363		23647	e]	
AM 16389		23664	[f	
AM 16410		23670	g]	
AM 16432		23699	n.s. i seen	



X mic	Plate	Date	F. D	Estimate	Remarks
	B 6187		11886	n.s. i seen	
	B 8528	Apr 18, 1892	12350	n.s. i seen	slide 631
	B 11814		13052	n.s. j seen	
	B 17623		13845		
	B 21422		14426	n.s. l seen	
	B 22269		14617	[k	
	B 22958		14806	[j	
	B 23223		14835	[i	
	B 23511		14853	j-k	
	B 23883		14884	[k	
	B 25752		15225	i-j	
	B 26095		15275	e-d	
	B 26616		15341	n.s. k seen	
	B 29724		15886	n.s. k seen	
	B 31924		16268	[i	
	B 32057		16292	[k	
	B 32327		16321	[j k	
	B 32335		16323	e	slide 3345
	B 32496		16348	n.s. l seen	
	B 37306		17697	[b	



Plate	Date	Field	Observations	Remarks
A 12166		23295	12.3.15	
A 12189		23310	12.3.15	
A 12189		23311	12.3.15	
A 12228		23325	12.3.15	
A 12240		23338	12.3.15	
A 12289		23332	12.3.15	
A 12249		23351	12.3.15	
A 12373		23567	12.3.15	
A 12375		23567	12.3.15	
A 12432		23585	12.3.15	
A 12509		23610	12.3.15	



DP 100, 100 200, 100 200, 100 200, 100 200

100 200, 100 200, 100 200, 100 200, 100 200



66

U for. Worked on B19819 +

Arbitrary sequence marked on AX

910TB 23954

Plate	Date	FD	Estimate	Remarks
AX 352		23761	n.s. e seen	Pov
AX 798		24033	e-m	
AX 818		24047	n.s. e seen	
AX 859		24066	n.s. e seen	
AX 880		24082	n.s. m seen	
AX 909		24089	n.s. n seen	
AX 910		24089	n.s. n seen	
AX 928		24118	n.s. n seen	
AX 939		24134	n.s. m seen	
AX 970		24168	n.s. n seen	
AX 1340		24412	n.s. n seen	
AX 1348		24415	n.s. j seen	
AX 1400		24491	n.s. n seen	
AX 1423		24498	n.s. m seen	
AX 1424		24498	n.s. m seen	
AX 1436		24503	" n "	
AX 1457		24516	" m "	
AX 1479		24525	" n "	
AX 1489		24528	" m "	
AX 1501		24533	" e "	
AX 1534		24554	" m "	
AX 1547		24564	m-n	
AX 1865		24759	n.s. n seen	
AX 1872		24761	n.s. n seen	
AX 1888		24766	n.s. m seen	
AX 1910		24772	n.s. n seen	
AX 1924		24787	n.s. n seen	
AX 1933		24790	n.s. n seen	
AX 1958		24801	n.s. n seen	



U For Plate	Date	JD	Estimate	Remarks
AX 1967		24804	n.s. n seen	
AX 1978		24821	n.s. n seen	
AX 2026		25158	"	
AX 2040		25179	[n	
AX 2051		25183	n	
AX 2067		25201	k-l	
AX 2074		25202	k	
AX 2101		25230	d-e	
AX 2106		25234	d-	
AY 1814		25189	n.s. h seen?	Poor



68

U for Plate	Date	J. D	Estimate	Remarks
AM 16052		23291	ns g-h seen	
AM 6788		18631	ns. i seen	
AM 6803		18647	ns j seen	
AM 10287		20461	f-g	
AM 11109		20749	f-g	
AM 11266		20767	h	
AM 12530		21136	ns. g seen	
AM 11364		20783	j	
AM 11489		20847	ns l seen	
AM 12660		21159	ns h seen	
AM 12812		21202	ns j seen	
AM 13786		21664	ns. g seen	
AM 14497		21872	ns h seen	
AM 16676		24139	ns. g seen	
AM 16091		23326	i	
AM 16122		23346	i	
AM 16135		23372	[l	
AM 16158		23404	ns. m seen	
AM 16384		23663	[g	
AM 16415		23674	h	
AM 16487		23771	ns. j seen	
AM 16507		23785	ns. l seen	foot
AM 16535		23792	ns. k seen	
AM 16558		23797	ns. c seen	
AM 16583		23812	ns. k seen	
AM 16610		23820	ns h seen	



U for plate	Date	J. D	Estimate	Remarks
AM 16648		24120	n.s. l seen	
AM 16667		24137	n.s. h seen	
AM 16695		24165	n.s. f seen	



70

U for  
plate

Date	S. D	Estimate	Remarks
B 11935	13055	n.s. m seen	
B 12434	13139	fh	
B 14346	13412	k	
B 16995	13762	h	
B 17190	13787	h	
B 17802	13873	n.s. k seen	
B 18648	13997	n.s. m seen	
I 19624	14252	n.s. m seen	
B 19819	14116	e-f	
B 20026	14147	c	
B 20225	14168	n.s. l seen	
B 20629	14202	n.s. l seen	
B 20812	14249	n.s. k seen	
B 22115	14596	n.s. h seen	
B 23954	14885	n.s. m seen	
B 23994	14891	n.s. m seen	
B 24267	14928	n.s. l seen	
B 22347	14639	n.s. l seen	
B 24490	14970	n.s. m seen	
B 25944	15266	n.s. m seen	
B 25992	15267	n.s. h seen	
B 35066	16766	n.s. h seen	



U for Plate	Date	F.D	Estimate	Remarks
AC1837		15664	j ? seen	Faint
AC15959		20502	ns g seen	
AC16747		20757	[g ?	faint
AC17051		20832	ns. g seen	
AC17189		20869	ns. h seen	
AC17907		21126	ns h seen	
AC24444		23031	[f ? f seen	
AC24527		23052	[f ?	
AC25424		23725	ns. i seen	
AC25497		23768	ns. i seen	
AC25534		23782	ns. g seen	
AC23244		22698	ns. f seen	
AC25425		23725	ns. j seen	
AC25498		23768	ns. j seen	
AC25535		23782	ns. h seen	
I 2937		11763	ns i seen	
I 16530		13878	ns. m seen	
I 16772		13908	ns. l seen	
I 15961		13820	k ? k seen	
I 17053		13937	ns. f seen	
I 17283		13965	ns. l seen	
I 19404		14228	ns. m seen	
I 22535		14720	ns. h seen	
I 25774		15275	ns. m seen	
I 33661		17169	ns. l seen	
I 41572		23315	i-j	











Marked on same plate as sequence		DI Lyr		DM Lyr		DN Lyr <sup>(US)</sup>	
Arbitrary	Sequence	marked on	A12395	Estimate	Estimate	Estimate	A12395
Plate	Date	F D					
A 12166		23295	—			[j	
A 12184		23310	ns j seen			ns. j seen	
A 12188		23311	ns j seen			[j	
A 12208		23325	ns j seen			ns. j seen	
A 12226		23336	—			sw [j	
A 12229		23337	—			—	
A 12249		23352	ns j seen			sw [j	
A 12393		23566	j			e	
A 12395		23567	j			e	
A 12432		23585	—			—	
A 12509		23610	g-h			[g	
A 12524		23618	h			g-h	
A 12538		23621	h-i or h			g-h	
A 12542		23622	h			g-h	
A 12545		23622	[h			h]	
A 12552		23631	[h			h]	
A 12554		23631	h-i			h]	
A 12556		23632	h-i			—	
A 12558		23634	—		here x	h	
A 12560		23634	h-i			h]	
A 12625		23663	[i			[i	
A 12632		23664	[i			i-j	
A 12677		23676	[i			i-j	
A 12685		23677	[j			i-h	
A 12690		23678	[j			i-h	
A 12693		23678	[j			i-h	
A 12716		23693	[j			j]	
A 12723		23695	j			j	



DP Lgr	BM Lgr	DP Lgr (69)	D.L Lgr
A12690	follows in this book	A12395	A12208
Estimate	Estimate	Estimate	Remarks
sub I h		ns. i seen	—
ns. h seen		—	—
ns. h seen		—	—
sus? I h		ns. i seen	[ ]
ns. h seen		ns. i seen	—
ns. h seen		sub Ii	—
ns. h seen		h-i	d
ns. g seen		e	—
ns. h seen		e	—
—		—	—
ns. g seen		ns. h seen	—
ns. h seen		ns. h seen	—
ns. g seen		—	—
ns. h seen		ns. i seen	—
ns. h seen		ns. i seen	—
ns. h seen		ns. i seen	f
ns. h seen		ns. i seen	f
ns. h seen		—	—
ns. h seen		ns. i seen	—
ns. h seen		ns. i seen ?	—
ns. h seen		—	—
[f]		—	—
[h]		—	—
[c]		ns. h seen	—
c		—	—
c		—	—
b]		ns. h seen?	—
b]		ns. h seen	—
[		—	—



Plate	Date	J.D	DI Lgr. Estimate	DM Lgr. Estimate	DN Lgr. Estimate
A 12729		23697	n.s. h seen		n.s. j seen
A 12731		23698	n.s. h seen		n.s. h seen
A 12738		23699	[j		sw j
A 12745		23700	n.s. h seen		n.s. j seen
A 12753		23702	[j		n.s. j seen
A 12762		23703	[j		n.s. i seen
A 12770		23704	[j		n.s. h seen
A 12779		23705	[j		n.s. i seen
A 12794		23708	[j		sw j
A 12799		23712	n.s. h seen		
A 12822		23727	j		n.s. i seen
A 12825		23728	n.s. j seen		n.s. i seen
A 12826		23728	n.s. h seen		n.s. i seen
A 12846		23737	n.s. h seen		n.s. g seen
A 12853		23739	n.s. j seen		n.s. j seen

44

A 12872	24317
AX 602	23947
" 665	23969
794	24033
" 1181	24325
1247	24357
1317	24404
1361	24432
1709	24684



D.P. Lgr. Estimate	B.M. Lgr. Estimate	D.P. Lgr. Estimate	Remarks	D.L. Lgr.
b]		n.s. h seen		—
a-b		n.s. f seen		—
a-b		n.s. h seen		[h
a-b		n.s. f seen		—
a-b		n.s. h seen		h-i
a-b		n.s. h seen		—
[a		n.s. h seen		[h
[a		n.s. h seen		—
[a		sus. f seen		h-i?
—		—		—
b]		—		h-i
b-c		sus h		[h
b-c		n.s. g seen		[h
[d		—		h]??
d-e		g		g

not the true  
nod max

" "

" "

" "

" "

" "

" "

" "



Plate	Date	J.D	DI Sp. Estimate	DM Sp. Estimate	DN Sp. Estimate
MF 4487		22191	n.s. f seen		n.s. g seen?
MF 6356		22525	[c]		n.s. f seen
MF 6580		22541	[c]		n.s. e seen
MF 6603		22543	c-d		n.s. d seen
MF 6651		22546	[c]		n.s. g seen
MF 7024		22577	d		n.s. e seen
B 5944	1891 May 17	11670	n.s. c seen		
9863	1893 July 21		n.s., c n.s.		
9864	July 21	11666	n.s. c seen		
11709	1894 July 31		—		
15745b	1896 May 9		c n.s.		
19976	1897 Aug 6	14143	n.s. g seen?		
31657	1903 May 20	16255	n.s. e seen		
31892	June 1	16267	n.s. g seen		
32615	June 19	16285	n.s. g seen		
40757	1909 Aug 23		n.s. c seen		
12932	1899 May 30		n.s. e seen		
17371	1896 Sep 5	13808	n.s. e seen		



	DP Lys Estimate	BM Lys Estimate	DQ Lys Estimate	Remarks	D.L. Lys
?	ns. b seen		—	DL too faint	—
en	ns. a seen		—	for MF plates	—
en	ns. b seen		—		—
—	—		ns. (faint pl.)		—
—	ns. b seen?		ns. e seen		—
—	b] ?		—		—



Plate	Date	J.D	DI Lg Estimate	DM Lg Estimate	DN Lg Estimate
B 9889		12667	n.s. e seen		n.s. g seen
B 13938		13378	n.s. f seen		n.s. f seen
B 14093		13385	n.s. g seen		—
B 16293		13723	n.s. f seen		n.s. f seen
B 19517		14086	n.s. g seen		n.s. g seen
B 22014		14571	—		—
B 23415		14847	n.s. c seen		—
B 23697		14863	n.s. i seen		n.s. i seen
B 27488		15533	[g		g
B 27649		15547	[g		—
B 30483		15960	g		[g
B 32358		16327	n.s. h seen		g-h
B 37544		17727	n.s. g seen		—
B 40410		18467	n.s. g seen		—
A 2721		14181	Swg ?		n.s. g seen
A 4792		15307	n.s. g seen		n.s. g seen
A 4812		15310	n.s. g seen		n.s. h seen
A 5627		15632	n.s. i seen		n.s. j seen
A 7414		17053	n.s. g seen		n.s. i seen
A 8493		17823	n.s. j seen		n.s. i seen
A 8486		17818	n.s. g seen		n.s. j seen
A 9854		18593	n.s. h seen		—



DP Lgr Estimate	BM Lgr Estimate	DP Lgr Estimate	Remarks	DL Lgr. <sup>20.</sup> (73)
ns. b seen		—		[h
ns. b seen		—		—
—		—		—
ns b seen		—		[d
—		ns. f seen		[h
—		—	Poor plate	—
—		—		—
g		ns. g seen		[d
ns. f seen		ns. f seen		[g
—		—		—
d		ns g seen		[g
ns. f seen		ns. f seen		—
—		—		—
—		—		—
ns. c seen		ns. d seen very flt		d]
ns. c seen		d]	DI on edge	h]
ns. f seen		e		g-h
[a <sup>balunda</sup> max		[h	variables are marked on this plate	d]
[b		ns. h seen		e]
[b		—		[h
[f		—		[h
—		—		—



Plate	Date	J D	D I Lgr Estimate	D M Lgr Estimate	D W Lgr Estimate
AX 1164		24320	ns. g seen		
1196		24327	n.s. g not seen		
1250		24359	n.s. C seen		
1275		24374	n.s. C seen		
1308		24402	n.s. e seen		
1373		24440	n.s. e seen		
1578		24626	n.s. e seen		
1640		24651	n.s. g seen		
1657		24656	n.s. g seen		
1706		24683	n.s. d seen		
1735		24700	n.s. C seen		
1747		24704	n.s. g seen		
1792		24713	n.s. d seen		
1793		24713	n.s. g seen		
1837		24739	n.s. d seen		
1818		24731	n.s. g seen		
1857		24755	n.s. g seen		
1891		24767	n.s. g seen		
1899		24769	n.s. g seen		
1942		24794	n.s. g seen		
1953		24800	n.s. g seen		
2016		25154	n.s. g seen		
2032		25177	n.s. g seen		
2037		25179			
AX 901		24088	= e		
1147		24317			
872		24081			
726		23993			
1094		24298			



DP Lyr  
EstimateBM Lyr  
EstimateDQ Lyr  
Estimate

Remarks

D. L. Lyr

c ?  
d ?  
e ?  
f ?  
g ?  
h ?











86

B.M. Agr. marked on AX 726

Arbitrary sequence marked on AX 726

Plate	Date	J.D	Estimate	Remarks
AX 528				
AX 536		23919	n.s. j seen	
AX 602		23947	j	
AX 603		23949	sus j	
AX 616		23960	ns j seen	On edge
AX 622		23961	j	
AX 641		23964	i-j	
AX 652		23967	i-j	
AX 665		23969	[i]	
AX 689		23974	i-	
AX 713		23991	h	
AX 726		23993	g	
AX 758		24017	h	
AX 763		24019	i	
AX 794		24033	i-j	
AX 806		24035	j	
AX 865		24076	sin	
AX 872		24081	[j]	
AX 901		24088	[j]	
AX 906		24089	n.s. i seen	
AX 912		24091	ns i seen	
AX 1068		24290	sus [j]	
AX 1069		24290	[j]	
AX 1107		24300	sus [j]	
AX 1147		24317	[j]	
AX 1165		24320	j	
AX 1197		24327	j ?	On edge
AX 1247		24357	i-j	
AX 1251		24359	i-j	
AX 1276		24374	j	



B M Lgr. Plate	Date	J D	Estimate	Remarks
AX 1285		24378	[j]	
AX 1181		24325	[j]	
AX 1309		24402	[j]	On edge
AX 1317		24404	[j]	
AX 1361		24432	[i]	
AX 1373		24440	[j]	
AX 1374		24440	[j]	On edge
AX 1641		24651	[j]	
AX 1700		24681	[j]	
AX 1709		24684	[j]	
AX 1765		24709	[j]	
AX 1838		24739	[j]	
AX 1892		24767	[j]	
AX 1915		24783	[j]	
AX 1972		24815	[i]	On edge
AX 2045		25181	[i]	
AX 2059		25196	[i]	
AX 1164		24320	[j]	
AX 1196		24327	[j]	
AX 1250		24359	[i-j]	
AX 1275		24374	[h-g]	
AX 1308		24402	[j]	
AX 1578		24626	[i-j]	
AX 1640		24651	[j]	
AX 1657		24656	[j]	
AX 1706		24683	[j]	
AX 1735		24700	[j]	
AX 1747		24704	[h-g] seen	



88

BM Age  
Plate

Date

J.D

Estimate

Remarks

AX 1792

24713

[i]

AX 1793

24713

[i]

AX 1837

24739

[i]

AX 1818

24731

[i]

AX 1857

24755

[i]

AX 1891

24767

[i]

AX 1899

24769

[i]

AX 1942

24794

[i]

AX 1953

24800

[h]

AX 2016

25154

[i]

AX 2032

25177

[i-j]

AX 2037

25179

[i]

AM 6326

18496

ns. i seen

AM 6361

18503

ns. i seen

AM 6395

18510

ns. i seen

AM 6408

18512

h?

AM 6507

18542

ns. i seen

AM 6655

18591

g

AM 7078

18858

ns. f seen

AM 7086

18859

ns. f seen

AM 7109

18863

ns. h seen

AM 7159

18883

ns. f seen



BM <i>lgr.</i>	Plate	Date	J.D	Estimate	Remarks
	AM 1470		15945	ns. i seen	
	AM 3720		17039	ns i seen	
	AM 4920		17738	ns. i seen	
	AM 9239		19973	ns f seen	
	AM 9938		20328	ns. f seen	
	AM 10606		20651	ns. i seen	
	AM 10718		20669	ns. i seen	
	AM 10976		20721	ns f seen	
	AM 10994		20724	ns i seen	
	AM 11317		20776	h?	
	AM 12032		21035	Sus i	
	AM 12298		21079	ns i seen	
	AM 12338		21092	ns. i seen	
	AM 12363		21099	ns i seen	
	AM 12386		21104	ns h seen	
	AM 12637		21157	ns. g seen	
	AM 15788		23192	[h	
	AM 15844		23209	h-g	
	AM 15886		23232	h	
	AM 15894		23233	ns h seen	
	AM 15940		23249	ns i seen	
	AM 15955		23251	ns. i seen	
	AM 15997		23267	ns. i seen	
	AM 16000		23268	ns. i seen	
	AM 16005		23269	ns. i seen	
	AM 16061		23306	ns. i seen	
	AM 16095		23335	ns. i seen	
	AM 16138		23377	[i	



90

B.M. Log  
Plate

Date

J.D

Estimate

Remarks

AM 16238

23536

n.s. i seen

AM 16269

23566

[i]

AM 16297

23576

[g]

AM 16321

23610

[g]

AM 16362

23647

n.s. i seen

AM 16388

23664

n.s. i seen

AM 16425

23692

n.s. i seen

AM 16430

23699

n.s. j seen

AM 5674

18145

[i]

AM 5696

18150

n.s. i seen

AM 5740

18160

i

AM 5786

18187

h-g

AM 5831

18201

g

AM 5869

18221

[i]

AM 6088

18434

[i]

AM 6132

18441

n.s. i seen

AM 6209

18467

n.s. i seen

AM 6295

18484

n.s. i seen

AM 6314

18494

n.s. i seen

B 27903

15583

for g?

B 28312

15621

[j]

B 29485

15868

n.s. j seen

B 30366

15945

B 40409

18467

[j]

Slide 2386



B.M. Lgr.	Plate	Date	J.D	Estimate	Remarks.
B 9889			12667	ns. j seen	
B 13938			13378	g	On edge
B 16293			13723	ns g seen	
B 19517			14086	ns g seen fully	
B 23697			14863	ns j seen	
B 27488			15533	[i	
B 30483			15960	h on h]	
B 32358			16327	[i	
B 9864			12666	ns f seen	
B 14502			13442	ns. i seen	
B 15048			13498	ns i seen	
B 17371			13808	ns. f seen	
B 3730			11189	[i]	
B 6155			11885	ns. i seen	
B 9216			12582	h	
B 11644			13031	ns. j seen	
B 13666			13351	f	
B 17871			13876	ns. i seen	
B 21414			14426	ns. h seen	
B 22933			14805	[h	
B 23851			14882	ns. j seen	
B 23857			14882	ns. f seen	
B 24417			14942	h-g	
B 25438			15163	e	
B 26055			15274	ns. i seen	
B 27629			15544	h	



92

B.M. Lgr. Plate	Date	F.D	Estimate	Remarks
AM 6434		18523	n.s. i seen	
AM 6449		18530	n.s. i seen	
AM 6625		18575	[i	
AM 6643		18588	h]	
AM 6947		18820	h-i	
AM 7184		18887	ns g seen	
AM 7227		18912	ns h seen	
AM 7266		18919	ns g seen	
AM 7419		19177	g	
AM 7518		19223	ns h seen	
AM 7545		19229	ns g seen	
AM 7855		19319	ns h seen	
AM 15797		23194	g]	
AM 15813		23199	h]	
AM 15843		23209	h-g	
AM 15878		23226	[g	
AM 15893		23233	[i	
AM 15910		23235	[i	
AM 15935		23248	ns. j seen	
AM 15970		23255	ns. i seen	
AM 16024		23279	ns. h seen	
AM 16060		23306	ns i seen	
AM 16069		23311	ns i seen	
AM 16099		23337	ns i seen	
AM 16237		23536	ns i seen	
AM 16289		23575	g-h	
AM 16320		23610	g-h	















Centauri marked on B29973 & AX772  
 Arbitrary sequence marked on B29973

Plate	Date	J.D.	Estimate	Remarks
B 3522		11167	c	
B 6261		11895	e-f	
B 6876		11984	g]	
B 13484		13346		Slide 705
B 14023		13384	[h	
B 15426		13635	d]	
B 15552		13657	[e	
B 15650		13673	[f	
B 15693		13684	g]	
B 15888		13694	strong green?	
B 16051		13712	no Li ion?	
B 16874		13728		
B 17256		13798	e	
B 18298		13933	n.s. h seen	
B 18529		13960	g	
B 18683		14008	c-d	
B 18946		14038	e	
B 19052		14055	f-g	
B 19410		14083	[i	
B 19679		14107	n.s. h seen	
B 20115		14156	n.s. e seen	
B 20238		14170	[f	
B 20277		14181	e	
B 21364		14412	e]	
B 21803		14479	k	
B 22467		14750	e-f	
B 22997		14811	f-g	
B 22999		14811	f-g	



## AO Centauri

Plate	Date	JD	Estimate	Remarks
B 23320		14842	n.s. f seen	
B 23462		14850	i-j	
B 24881		15100	f-g	
B 24944		15114	be-g	
B 25106		15121	e-g	
B 25175		15136	e-g	
B 25182		15137	e	
B 25699		15204	n.s. g seen	
B 25723		15206	[i]	
B 25863		15264	[i]	
B 27265		15499	e	
B 27645		15547		Slide 3477
B 27717		15557	f-g	
B 28079		15593	j	
B 29272		15843	f-g	
B 29973		15910	f-g	
B 30286		15933	f-g	
B 30524		15971	f-g	
B 32039		16289	d-e	
B 33355		16585	i-j	
B 33474		16594	[g]	
B 34080		16646	d	
B 36372		17037	e	
B 37722		17759	f-g	
B 37733		17760	f-g	On edge



O Centauri

Plate

Date

J.D.

Estimate

Remarks

AX 473

23900

no. Ij <sup>seen</sup> j <sup>fitly</sup>

AX 503

23909

i-j

AX 550

23930

no. k ?

AX 607

23959

[i

AX 639

23964

[h

AX 663

23969

h

AX 772

24024

e-f

AX 786

24026

e-d

Edge

AX 792

24033

l

AX 1060

24289

[i

AX 1048

24285

h

AX 1071

24292

[i

AX 1085

24296

h ?

AX 1136

24313

i-h

AX 1145

24317

n.s. i seen? On edge

AX 1219

24348

g]

AX 1221

24349

f]

AX 1263

24370

l

AX 1273

24374

e

AX 1302

24399

[c

On edge

AX 1573

24623

f]

AX 1574

24623

f]

AX 1601

24641

g]

AX 1609

24643

g]

AX 1613

24644

h]

AX 1638

24651

[i

AX 1664

24667

[j

AX 1670

24669

n.s. j seen?

Plate for

AX 1683

24672

n.s. j seen

AX 1689

24678

n.s. j seen?

Plate for



A O Centauri

Plate Date

J D

Estimate

Remarks

AX1726

24698

[i ?

Defect

AX1742

24703

n.s. j ser

AX1759

24707

j

AX1816

24731

[g

AX1835

24739

j g

AX1852

24753

j

AX1873

24762

j

AX1885

24766

j

AM 2845

16682

e

AM 2905

16695

[f

AM 3523

16977

[f

AM 3584

17000

[d-e

AM 3630

17010

d

AM 3702

17037

d

AM 3774

17068

[f



## A.O. Centauri

Plate	Date	J.D.	Estimate	Remarks
AM 15757		23180	ns. h seen	
AM 15764		23181	ns h seen	
AM 15817		23204	Sub, g g seen	
AM 15824		23206	[g]	
AM 15825		23206	[g]	
AM 15834		23207	[g]	
AM 15839		23209	Sub, g	
AM 15861		23221	[g]	
AM 15883		23229	[e]	
AM 15891		23233	e	
AM 15907		23235	e	
AM 15908		23235	e	
AM 15919		23237	[j]	
AM 15924		23239	[j]	
AM 15967		23255	[c]	
AM 15976		23257	c-d	
AM 15983		23261	[d]	
AM 15985		23262	c-d	
AM 15992		23266	[c]	
AM 16001		23269	c-d	
AM 16038		23284	[d]	
AM 16219		23533	Sub, j j seen	
AM 16227		23535	ns g seen	
AM 16251		23547	ns e seen	
AM 16273		23567	ns. f seen	
AM 16279		23573	ns. g seen	
AM 16280		23573	ns. g seen	
AM 16287		23575	ns. g seen	
AM 16341		23619	e	



## A.O. Centauri

Plate	Date	J.D.	Estimate	Remarks
AM 16350		23639	d	
AM 16352		23640	e-d	
AM 16385		23664	e	
AM 60		14871	ns g seen	
AM 106		14891	[g]	
AM 412		15114	f	
AM 497		15189	f	
AM 764		15499	e	
AM 840		15543	d-e	
AM 979		15607	ns h seen	
AM 1188		15847	[f]	
AM 1205		15858	f	
AM 1212		15868	e-f	
AM 1324		15911	[e]	
AM 1332		15912	e	
AM 1362		15915	e	
AM 1373		15918	e	
AM 1388		15926	[f]	
AM 1512		15983	ns i seen	
AM 1826		16166	ns h seen	
AM 1861		16222	f	
AM 1979		16267	d	
AM 2045		16282	[d]	
AM 2073		16293	e]	
AM 2507		16578	ns g seen	
AM 2607		16605	f-g	
AM 2637		16608	f	
AM 2687		16633	[f]	
AM 2737		16643	d	
AM 2815		16668	d-e	











RR Cr A washed on B 22510

Arbitrary sequence washed on B 22510

Plate	Date	F.D	Estimate	Remarks
B 22510	April 6, 1899	14751	f	RR is close to another
B 29570		15870	d]	star & very
B 16518		13740	[i	hard to separate
B 29605		15872	d	on A & plates
B 29853		15897	e]	
B 38031		17813	p-g	
B 23496		14853	[i	
B 19113		14058	[i	slide 3533
B 3861	July 20, 1889	11204	L-	
B 9281		12585	h]	slide 3531
B 42309		19176	[[i	
B 13575		13349	d-e	
B 17445		13826	[i	
B 27595		15542	g-h	
B 30360		15945	g	
B 31469		16222	[g	
B 40062		18406	d-	
B 43355		19605	h]	
B 44858		20338	g]	
B 47324		21026	[g	
B 32058		16293	[i	
B 44878		20340	f-g	
B 31404		16208	g	
B 27920		15585	d	
B 25206		15142	i	
B 20356		14183	d-c	



RR C. A.				
Plate	Date	J.D	Estimate	Remarks.
MF 8537		23911	[i	
MF 8673		23965	[i	
MF 8785		24026	f-g	
MF 9816		24411	[i	
MF 9838		24413	[i	
MF 8724		23992	[i	
MF 10141		24626	g	
MF 10146		24627	g-h	
MF 10240		24649	i	
MF 10249		24650	[i	
MF 10271		24654	[i	
MF 10279		24655	i	
MF 10284		24656	[i	
MF 10365		24681	[i	
MF 10522		24711	[i	
MF 10534		24712	[i	
MF 10572		24727	[i	
MF 10576		24728	[i	
MF 10577		24728	[i	
MF 10578		24728	[i	
MF 4538		22193	n.s. seen	
MF 6347		22525	n.s. seen	
MF 6648		22546	[i	
MF 10579		24728	[i	
MF 10574		24728	[i	
MF 9828		24412	[i	



RR Cr A  
plate

Date

J. D

Estimate

Remarks.

AX 535

23919

[g

AX 613

23960

[g

AX 645

23965

[g

AX 725

23993

[g

AX 1106

24300

d [g

AX 1284

24378

[g

AX 1316

24404

[g (very little)

AX 1360

24432

[g

AX 1575

24623

[g

AX 1625

24648

[g (very little)

AX 1650

24654

[g

AX 1757

24706

[g-

AX 1853

24754

[g-

AX 1919

24787

[g-

AX 1941

24794

[g-

AX 2015

25154

[g

AX 1761

24707

[g-

may always  
be fainter than star  
nearby  
is about h.



RR Cr A				
Plate	Date	J. D	Estimate	Remarks
AM 15745		23178	dJ	
AM 15767		23181	[d]	
AM 15795		23194	d-c	
AM 15826		23206	[d]	
AM 15842		23209	d	
AM 15869		23222	e	
AM 15909		23235	p	
AM 15931		23247	g?	
AM 15934		23248	g	
AM 15990		23265	[g]	
AM 15996		23267	[g]	
AM 16014		23275	[g]	
AM 16015		23276	[g]	
AM 16059		23306	n.s. g seen	
AM 16068		23311	n.s. g seen	
AM 16120		23346	[g]	
AM 16230		23535	[g]	
AM 16296		23576	[g]	
AM 16357		23639	[g]	
AM 16382		23662	[g]	
AM 16386		23664	[g]	



108

RRCr. A.

Plate	Date	J. D.	Estimate	Remarks
AM 4886		17728	[f]	
AM 9012		19924	[g]	
AM 10605		20651	[f]	
AM 10624		20653	[f]	
AM 10684		20664	[g]	
AM 10710		20668	[f]	
AM 10717		20669	[f]	
AM 10984		20723	[g]	
AM 11073		20739	[g]	
AM 11944		21025	[f-g]	
AM 12309		21081	[f-g]	
AM 13055		21344	[f]	



RR Cr A				
Plate	Date	J.D	Estimate	Remarks.
AX 614		23960	[g]	
AX 622		23961	[g]	
AX 652		23967	[g]	
AX 713		23991	[g]	
AX 762		24019	[g]	
AX 763		24019	[g]	
AX 806		24035	[g]	
AX 1067		24290	[g]	
AX 1068		24290	[g]	
AX 1098		24299	[g]	
AX 1107		24300	[g]	
AX 1164		24320	[g]	
AX 1196		24327	[g]	
AX 1250		24359	[g]	
AX 1275		24374	[g]	
AX 1307		24402	[g]	
AX 1308		24402	[g]	
AX 1373		24440	[g]	
AX 1578		24626	[g]	
AX 1617		24646	[g]	
AX 1640		24651	[g]	
AX 1649		24654	[g]	
AX 1657		24656	[g]	
125 62				











BL Sco. marked on Plate B 16031

Arbitrary sequence marked on plate

Plate	Date	J.D	Estimate	Remarks
AX 535		23919	ns. k seen	
AX 613		23960	ns. k seen	
AX 645		23965	ns. l seen	
AX 725		23993	[k	
AX 1049		24285	ns. k seen	
AX 1106		24300	sus l	
AX 1254		24378	k]	
AX 1316		24404	h	
AX 1360		24432	[e	
AX 1575		24623	ns. k seen	
AX 1625		24648	ns. l seen	
AX 1650		24654	ns. l seen	
AX 1757		24706	ns. k seen	
AX 1853		24754	[k	
AX 1919		24787	k]	
AX 1941		24794	f-g ?	
AX 2015		25104	ns. k seen	
AX 640		23964	l	
AX 650		23967	ns. k seen	
AX 663		23969	ns. k seen	
AX 712		23988	k]	
AX 762		24019	f]	
AX 805		24035	ns. g seen ?	
AX 1067		24290	ns. f seen	
AX 1071		24292	ns. k seen	
AX 1098		24299	ns. l seen	
AX 1219		24348	ns. l seen	
AX 1274		24374	[k	



B L Leo				
Plate	Date	J D	Estimate	Remarks
AX1307		24402	k	
AX1577		24626	n.s. seen	
AX1617		24646	n.s. seen	
AX1649		24654	n.s. seen	
AX1671		24669	n.s. seen	
AX1761		24707	e	
AX1775		24711	[e	
AX1836		24739	k-e	
AX1862		24759	k	



114

BL Sco  
plate

Date

J. D.

Estimate

Remarks

B 5952

May 18, 1891

11871

n.s. k seen

B 13993

July 8, 1890

13383

[k

B 21104

March 28, 1898

14377

n.s. k seen

B 21991

Oct 7, 1898

14570

k

B 22476

Apr. 5, 1899

14750

n.s. k seen

B 22608

Apr 21, 1899

14766

sus [k

B 23479

July 15, 1899

14851

e

B 23058

June 16, 1899

14822

h-k

B 25080

15120

n.s. k seen

B 25516

15172

[l

B 25918

15266

e-

B 27431

15532

n.s. l seen

B 28116

15599

h]

B 28255

15619

g

B 30105

15918

n.s. l seen

B 30339

15942

sus. [l

B 30359

15945

n.s. l seen

B 40484

18484

l

B 41627

18867

g

B 42306

19176

n.s. k seen

B 3833

July 17, 1889

11201

k-l

B 16031

May 30, 1896

13710

e



BL Leo

Plate	Date	J.D	Estimate	Remarks
AM 15795		23194	ns. f seen	
AM 15931		23247	[f]	
AM 15990		23265	d-e	
AM 15996		23267	d-e	
AM 16014		23275	d	
AM 16015		23276	d-e	
AM 16017		23277	d-e	
AM 16296		23576	n.s. h seen	
AM 16357		23639	g	
AM 16382		23662	d-e	
AM 16386		23664	e	
AM 14037		21751	ns. g seen	
AM 14048		21755	ns g seen	
AM 14061		21757	ns g seen	
AM 14083		21760	ns g seen	
AM 15852		23219	[g]	
AM 15862		23221 ?	ns. h seen	
AM 15892		23233	g	
AM 15920		23237	[g]	
AM 15995		23267	d-e	
AM 15998		23268	e]	
AM 15999		23268	e	
AM 16222		23533	ns. h seen	
AM 16318		23610	h	
AM 16353		23640	[e	
AM 1952		16253	ns. h seen	
AM 2085		16297	ns. g seen	
AM 2129		16311	ns. g seen	



116

BL Leo Plate	Date	J D	Estimate	Remarks
A 2308		14069	d-e	
A 5646		15639	e	
A 6308		16177	n.s. h seen	
A 7287		16965	[k	
M 7 4450		22188	n.s. l seen	
M 7 4509		22192	n.s. k seen	x
M 7 4554		22194	sun [l	
M 7 4696		22200	n.s. l seen	
M 7 6736		22551	[k	
B 40133		18427	l-g	
B 40271		18438	e	
B 40358		18456	c]	
B 43426		19634	l-g	
B 44711		20315	n.s. l seen	
B 44783		20330	n.s. k seen	
B 44861		20338	n.s. k seen	
B 44876		20339	n.s. l seen	
B 44932		20356	n.s. k seen	
B 45000		20362	sun [k	
B 45001		20362	k-e	
B 51199		21402	n.s. h seen	



BL No	Plate	Date	J. D	Estimate	Remarks
	AM 2147		16319	n.s. g seen	
	AM 2244		16359	n.s. g seen	
	AM 2572		16593	n.s. g seen	eJ
	AM 2618		16606	n.s. g seen	
	AM 2639		16608	n.s. g seen	
	AM 2713		16636	n.s. h seen	
	AM 2746		16646	n.s. l seen	
	AM 2756		16650	n.s. h seen	
	AM 2797		16663	n.s. h seen	
	AM 2854		16683	n.s. g seen	
	AM 2916		16697	n.s. g seen	
	AM 2959		16711	n.s. g seen	
	AM 3392		16922	n.s. g	
	AM 3448		16943	n.s. g seen	
	AM 3496		16968	n.s. g seen	
	AM 3537		16979	n.s. g seen	
	AM 3625		17009	n.s. g seen	
	AM 4886		17728		
	AM 12309		21081	n.s. g seen	
	AM 13055		21344	n.s. g seen	



118

BL Sco

Plate

AM 10093

AM 10902

Date	J. D	Estimate	Remarks
	20372	n.s.f seen	
	20708	n.s.g seen	
B 3728	11189	c	
B 8711	12378	[k	
B 9556	12623	[l	
B 11421	12994	n.s.k seen	
B 19482	14085	c	
B 19726	14108	c-d	















122

TX Cen Reached on B 33613 and		AX 526		
Arbitrary Sequence marked on B 33613				
Plate	Date	T. D	Estimate	Remarks
AX 473		23900	[g]	
AX 482		23902	g	
AX 503		23909	g	
AX 511		23912	n.s. g seen	
AX 517		23910	n.s. h seen	Trailed
AX 526		23918	[h]	
AX 550		23930	h	
AX 585		23941	h]	
AX 607		23959	[g]	
AX 620		23961	[h]	
AX 637		23964	n.s. h seen	Trailed
AX 681		23972	[g]	
AX 729		23996	[h]	
AX 779		24025	[g]	
AX 1011		24245	f-g	
AX 1055		24286	[g]	
AX 1079		24294	[h]	
AX 1085		24296	[g]	
AX 1136		24313	f-g	
AX 1140		24314	g	
AX 1194		24327	[h]	
AX 1221		24349	f-g	Trailed
AX 1230		24354	h]	
AX 1241		24356	h] ?	
AX 1248		24359	ses g?	
AX 1273		24374	g?	Trailed
AX 1278		24375	[h]	
AX 1565		24621	f-g	



T X Cen.				
Plate	Date	J.D	Estimate	Remarks
AX 1572		24623	g	
AX 1573		24623	g?	
AX 1596		24641	g-h	
AX 1613		24644	g	
AX 1646		24653	h]	
AX 1674		24670	h+	
AX 1745		24704	h	
AX 1759		24707	[g	
AX 1826		24733	[h	
AX 1835		24739	[g	
AX 1873		24762	g-g	



124

TX Cen

Plate	Date	J D	Estimate	Remarks
B 3403		11158	h-	
B 11201		12970	h	
B 19303		14077	[g	
B 21240		14398	f-g	
B 22524		14752	h-	
B 23845		14882	g-h	
B 26953		15437	h]	
B 26976		15442	g+	
B 27301		15515	h+	
B 27812		15571	h-	
B 27917		15585	h	
B 29592		15871	g	
B 30103		15918	g-h	
B 31940		16269	h	
B 35747		16937	h	
B 37731		17760	[h	
B 27708		15556	[h	
B 33613		16605	g]	
B 9330		12587	g]	
B 6439		11911	[h	
B 9660		15194	f-g	
B 9304		12586	g]	
B 11089	May 3, 1894	12952	h-	
B 11785		13051	g-h	
B 11786		13051	g-h	
B 12776		13182	h+	
B 12838		13258	sus h]	
B 15296		13569	h-h	



TX Cen Plate	Date	J D	Estimate	Remarks
B 19989		14146	g-h	
B 25717		15206	g-h	
B 26950		15415	[h	
B 27291		15513	g-h	
B 31348		16166	g-h	
B 44543		20289	g-h	
B 44608		20300	g-h	
B 46448		20960	g-h	
B 46501		20964	g-	
B 46617		20994	h	
B 46798		21007	[h	
B 49892		21331	h-h	
B 49943		21332	[h	
B 50057		21335	h-	
B 50132		21337	g-h	
B 50133		21337	g-h	
B 50188		21347	[h	
B 50334		21357	g	
B 50358		21360	g-h	
B 50389		21361	h]	



126

T X Cen

Plate

Date

J. D

Estimate

Remarks

AM 27

14865

h+

AM 454

15147

[h

AM 525

15220

h

AM 745

15474

h-

AM 775

15514

h]

AM 815

15533

[h

AM 848

15547

g-h

AM 5500

18090

g]

AM 5501

18090

[g

AM 5510

18092

[g

AM 5546

18100

n.s. g seen

AM 5630

18129

n.s. g seen

AM 5656

18133

n.s. g seen

AM 5657

18133

n.s. g seen

AM 5661

18143

g

AM 5662

18143

g -

AM 5671

18145

[g

AM 5672

18145

[g

AM 8476

19602

n.s. g seen

AM 9974

20337

n.s. g seen

AM 10390

20594

[I g

AM 10481

20612

h ?

AM 10620

20653

h +

AM 10681

20664

h -

AM 10709

20668

[h

AM 10953

20717

sus [I h

AM 11012

20727

g - h

AM 11620

20960

h +

AM 11911

21022

[h



TX Cen Plate Date	T. D	Estimate	Remarks
AM 11923	21023	[h	
AM 12302	21080	n.s. g seen	
AM 12307	21081	h]	
AM 12336	21092	n.s. g seen	
AM 12992	21332	h	
AM 13003	21333	[h	
AM 13047	21341	[g	
AM 13266	21393	[g	
AM 13273	21394	[g	
AM 13287	21395	h]	
AM 13515	21456	sw h]	
AM 13804	21686	g	
AM 13843	21695	[h]	
AM 14013	21746	h	
AM 14014	21747	h-	
AM 14019	21749	h-g	
AM 14027	21750	[g	
AM 14080	21760	[h	
AM 14350	21834	[g]	
AM 14361	21836	g-	
AM 14631	22072	[g	
AM 14775	22129	[g	
AM 14806	22136	[g	
AM 14889	22175	[g	
AM 15231	22482	[g]	
AM 15255	22492	[g	
AM 15382	22543	h]	
AM 1050	15635	n.s. g seen	
AM 1235	15872	h]	



TX Cen Plate	Date	J. D.	Estimate	Remarks
AM 1249		15885	g	
AM 1284		15898	sus [L h	
AM 1413		15933	h	
AM 1434		15940	h	
AM 1453		15942	h	
AM 1908		16240	h-	
AM 1924		16242	h+	
AM 1936		16249	h+	
AM 1971		16264	[g	
AM 2090		16298	g-h	
AM 2113		16309	h-	
AM 2259		16361	h+	
AM 2273		16375	ns g seen	
AM 2460		16496	ns h seen	
AM 2483		16557	sus [g	
AM 2555		16589	[g	
AM 764		15499	[g	
AM 840		15543	g+	
AM 1174		15842	ns g seen	traced
AM 1188		15847	ns g seen	"
AM 1205		15858	ns g seen	"
AM 1212		15868	g-	
AM 1324		15911	ns g seen	
AM 1362		15915	ns g seen	
AM 1373		15918	ns g seen	
AM 1388		15926	ns g seen	
AM 1512		15983	sus [g	
AM 1826		16166	ns g seen	



TX Cen Plate	Date	J D	Estimate	Remarks
AM 1979		16267	[g]	
AM 2045		16282	[g]	
AM 2169		16331	[g]	
AM 2548	April 16, 1904	16587	[g]	
AM 2607		16605	[g]	
AM 2687		16633	[g]	ns. g seen
AM 2815		16668	[g]	
AM 2845		16682	[g]	
AM 3429		16937	[g]	ns g seen
AM 3702		17037	[g]	











W Piscium		Marked on I 31199		Remarks
Plate	Date	J.D	Estimate	
I 2883				Cracked.
I 3009	Feb 6, 1891	11770	n.s. & scanty	
I 4905	Dec 1, 1891	12068	n.s. & seen "	
I 9264	Aug 15, 1893	12691	cj	
I 9469	Sept 12, 1893	12719	[f	
I 10076	Nov 26, 1893	12794	n.s. & scanty	
I 11444	Sept. 11, 1894	13083	d	
I 11572	Oct. 10, 1894	13112	n.s. & seen	
I 12177	Jan 2, 1895	13195	l	
I 13748		13495	n.s. & seen	
I 16870		13918	n.s. & seen	
I 19452		14233		slide 1484
I 21730		14615	f-g	
I 24785		15091	n.s. & h seen	
I 26294		15376	g+	
I 28068		15730	cj	
I 29692		16107	c	
I 30979		16390	n.s. & h seen	
I 33375		17112	k-l	
I 33483		17125	[l	
I 40726		23029	l	
I 41495		23283	c	
I 31199		16444	lj	



W Piscium

Plate	Date	J. D	Estimate	Remarks
I 4301		11996	n.s.g. seen	
I 28035		15721	d7	
I 40727		23029	l-	
I 40752		23030	l-	



134

W Piscium  
Plate  
MF 1309

Date

J D  
21546

Estimate

h+

Remarks

AC 23323

22714

n.s. b seen

AC 23891

22899

n.s. b seen

AC 24093

22944

n.s. d seen

AC 24373

23004

n.s. d seen

AC 23937

22911

n.s. b seen

AC 24023

22928

n.s. c seen

AC 24212

22971

n.s. c seen

AC 24311

22989

n.s. b seen

AC 24490

23043

n.s. b seen

AC 1168

15407

n.s. f seen

AC 1256

15434

n.s. f seen

AC 1776

15652

n.s. f seen

AC 1968

15696

n.s. d seen

AC 2009

15716

d

AC 2039

15721

c]

AC 2109

15746

d

?



W Piacum				
Plate	Date	J D	Estimate	Remarks
AC 1130		15390	ns. c seen	
AC 8940		17879	ns. k seen	
AC 16717		20751	ns. b seen	
AC 16941		20808	cj	
AC 16947		20809	cj	
AC 16967		20812	c	
AC 17022		20824	c ?	
AC 17191		20870	k-	
AC 17904		21126	ns. k seen	
AC 18086		21169	e - f	
AC 18176		21184	cj	
AC 24891		23324	ns. g seen	
AC 18463		21248	[k]	
AC 19373		21535	ns. g seen	
AC 19392		21537	[k]	
AC 19666		21607	k	
AC 20991		21979	d	
AC 22223		22334	e	
AC 22263		22339		
AC 22884		22587	ns. f seen	



136

W Piscium

Plate

Date

JD

Estimate

Remarks

AY 1809

25187

k

AX 404

23796

n.s. to see

AY 184

24000

k



W Piscium	Plate	Date	J. D	Estimate	Remarks
AC 2017			15717	C	
AC 2056			15724	CJ	
AC 2144			15753	J	
AC 2332			15796	ns. g seen	
AC 2860			16029	ns g seen	
AC 2935			16048	ns. h seen	
AC 4188			16428	ns f seen	
AC 4246			16440	ns. h seen	
AC 4397			16467	J	
AC 4425			16472	J d ?	
AC 4511			16490	CJ	
AC 4536			16497	d	
AC 5376			16770	ns. h seen	
AC 5524			16789	ns g seen	
AC 5657			16817	ns. h seen	
AC 5944			16881	d	
AC 6865			17140	ns f seen	
AC 7177			17228	sub f ?	
AC 7183			17230	d	
AC 7275			17253	d -	
AC 8087			17551	ns f seen	
AC 8117			17564	ns f seen	
AC 9146			17947	ns h seen	
AC 11230			18672	ns h seen	
AC 11363			18710	f-g	











140

S U Hercules Marked on I 25894

Arbitrary Sequence marked on I 25894

Plate	Date	JD	Estimate	Remark
-------	------	----	----------	--------

I 1607		11586	g in seen	
I 1694		11607	g	
I 1722		11608	g-	
I 4065		11965	g-	
I 6547		12290	g-	
I 6609		12298	g-h	
I 8747		12656	n.s. m seen?	
I 11002		12944	[g	
I 15847		13804	n.s. m seen?	
I 18864	? July 21, 1893	12666	n.s. k seen	
I 18877		14185	n.s. l seen	
I 18916		14186	n.s. k seen	On edge
I 18918		14186	n.s. m seen?	
I 20941		14472	n.s. l seen	
I 20960		14476	n.s. k seen	
I 21257		14561	h	
I 22762		14767	n.s. m seen fly	



S U Herculis

Plate	Date	J D	Estimate	Remarks
I 22891	May 23, 1899	14798	n.s. b seen	
I 25154		15124	n.s. b seen	
I 25894		15297	g-h	
I 27000		15521	n.s. m seen?	
I 27316		15613	f-g	
I 29189		15990	g-h	
I 31861		16675	h	Excellent
I 31997		16722	n.s. b seen	
I 32002		16723	n.s. b seen	
I 41241		23185	n.s. b seen	
I 41274		23195	n.s. m seen	
I 41354		23210	h	



S U Perseus

Plate Date

JD

Estimate

Remarks

AC 501	14965	[g ?	
AC 2349	15800	ns. l seen	
AC 2549	15883	h ?	
AC 2598	15901	h ?	
AC 2677	15941	g	
AC 2871	16031	ns. l seen	
AC 3673	16258	[g	
AC 3696	16263	[g-	
AC 4813	16576	[g	
AC 4887	16605	g-	
AC 6571	17061	ns. l seen	
AC 7569	17351	ns. l seen	
AC 10473	18428	h ?	
AC 12582	19306	g	
AC 16292	20575	Oh	
AC 16469	20633	g-	
AC 17618	21004	h ?	
AC 19430	21543	h ?	
AC 13160	19561	ns. l ?	
AC 20638	21901	h ?	
AC 14919	22186	h	
AC 26298	24624	g	
AC 26719	24944	[g	
AC 24666	23117	ns. l seen	
AC 25147	23467	ns. l seen after	
AC 25206	23506	h-l	good



SV Hercules				
Plate	Date	J.D	Estimate	Remarks.
AY 56		23903	[g ?	
AY 79		23934	[g	
AY 790		24413	h s seen	
AY 822		24431	ns seen	
AY 998		24612	g	
AY 1054		24648	l	
AY 1419		24973	l	
AY 1484		25040	ns h seen	
AY 1569		25109	ns h seen	
AY 1677		25158	ns h seen	
AY 76		23932	g-h	
AY 88		23937	g	
AY 167		23992	l	
AY 276		24062	[l ?	
AY 1027		24626	g	
AY 1028		24626	g	
AY 1029		24626	g-	
AY 1040		24640	h	
AY 1357		24939	g+	
AY 1375		24943	g	
AY 1389		24949	g-	
AY 1396		24950	g	
AY 1446		24999	l	
AY 1574		25117	ns h seen	
AY 1673		25155	[l	
AY 1766		25179	l-	



144

S U Hercules	Plate	Date	J D	Estimate	Remarks
	AX 171		23637	h	
	AX 223		23676	ns k seen	
	AX 106		23553	[k ?	















148

(37 L)

Sequence marked  
on B 18947

U Chamaeleontis	Watched on	B 16223	Sequence marked
Arbitrary	Sequence marked	on B 16223	
Plate	Date	Estimate	Remarks
B 12995	JD 13294	n.s. l seen	
B 16223	13721	h	
B 18947	14038	g-h	e-f
B 19826	14121	n	
B 22878	14795	[m	
B 24808	15080	h	
B 24809	15080	h	
B 25323	15158	[n	
B 25710	15206	n.s. n seen	
B 27778	15562	n.s. n seen	
B 30391	15946	n.s. l seen	
B 31798	16253	n.s. n seen	
B 34159	16653	n.s. m seen	
B 36367	17037	n	
B 38852	18069	n]	
B 41666	18869	n.s. l seen	
B 42356	19196	l	
B 46974	21013	n.s. h seen	
B 50103	21336	n.s. m seen	
B 11003	12940	n.s. l seen	



waited on AX1758

## U Chamaeleontis

Plate	Date	J D	Estimate	Remarks
AX 494		23907	e	
AX 576		23939	k	
AX 634		23963	k	
AX 687		23974	[k	
AX 693		23975	ns. k seen	
AX 766		24021	sus [m	
AX 813		24045	ns f seen	
AX 883		24083	ns. f seen	
AX 1016		24256	[k	
AX 1059		24289	[e]	
AX 1054		24286	k-l	
AX 1097		24299	e-m	
AX 1152		24318	m	
AX 1195		24327	[m	
AX 1249		24329	ns g seen	
AX 1283		24378	ns k seen	
AX 1325		24406	ns. n seen	
AX 1603		24642	k-	
AX 1604		24642	k-	
AX 1614		24646	[k	
AX 1643		24653	[e	
AX 1662		24667	e	
AX 17		24678	[n	
AX 1703		24682	n	
AX 1721		24697	[n	sus Ig
AX 1749		24705	sus [n	
AX 1806		24728	ns. n seen	[f
AX 1822		24732	ns n seen	[f seen



150

U Charaekontis

Plate

Date

J D

Estimate

Remarks

AX 551	23930	k	
AX 581	23940	k	
AX 625	23962	l	
AX 683	23972	k-l	
AX 731	23997	n.s. m seen	
AX 1099	24299	Fl	
AX 1159	24319	n	
AX 1203	24328	Fl	
AX 1224	24352	sus l m	
AX 1266	24371	n.s. n seen	
AX 1619	24642	k	
AX 1653	24655	[k	
AX 1693	24679	m	
AX 1750	24705	n.s. m seen	
AX 1807	24728	n.s. m seen	
AX 1824	24732	n.s. n seen	
AX 1856	24755	n.s. n seen	
AX 1952	24800	n.s. k seen	
AX 2049	25183	n.s. l seen	
AX 1486	24527	n.s. n seen	
AX 1827	24733	n	If
AX 1964	24803	n.s. l seen	
AX 2034	25177	n.s. n?	If
AX 2090	25211	n.s. n seen	If
AX 1758	24707	m-n	
AX 1779	24712	n.s. l seen	
AX 558	23933	k-	
AX 1024	24262	h	



Plate	Date	J D	Estimate	Remarks
AX1052		24286	[k ?	
AX1074		24293	k	
		24531	ns l seen	
AX647		23965	ns l seen	
AX1175		24324	ns k seen	
AM15939		23249	f ?	
AM15969		23250	f ?	
AM16210		23255	g ?	
AM16210		23529	ns l seen	
AM16399		23666	sus f] ? ns ?	
AM15898		23234	e	
AM15917		23237	g	
AM15973		23256	g-	
AM16215		23532	ns l seen	
AM16599		23816	ns g seen	



152

U Chamaeleontis

Plate

Date

JD

Estimate

Remarks

AM 886

15561

n.s. k seen

AM 3583

17000

n.s. k seen

AM 4310

17376

lj

AM 4926

17745

k-

AM 5402

18055

[l

AM 5715

18157

l?

AM 6189

18457

h?

AM 10909

20709

n.s. k seen

AM 11697

20994

n.s. k seen

AM 11707

20995

n.s. m seen

AM 14860

22163

n.s. k seen



U Chamaeleontis				
Plate	Date	J.D.	Estimate	Remarks
MF 3989		22136	n.s. seen	
MF 3864		22132	[n	
MF 3429		22077	n s l seen	
A 5115		15491	[n	
A 5126		15495	[n	
A 5782		15846	[n	
A 10375		19150	k-	
A 10406		19182	m	
A 10418		19212	[n	











UU Velorum		Marked on A 3020		
Arbitrary sequence marked on A 3020				
Plate	Date	JD	Estimate	Remarks
B 16591		13743	n.s. e seen	
B 18829		14035	[c	
B 18960		14041	e] ?	Defect?
B 9287	May 2, 1893	12586	ns d seen	
B 11128		12964	ns c seen	
B 11133		12964	ns c seen	
B 11169		12968	ns c seen	
B 11505		13012	ns b seen	
B 12933		13292	ns c seen	
B 13017		13295	[e	
B 15634		13673	ns c seen	
B 15916		13698	ns c seen	
B 18327		13945	c-d	
B 20972		14300	ns c seen	
B 21178		14392	d-e	
B 21212		14393	d	
B 22462		14750	e] ?	1009
B 22836		14791	ns c seen	
B 24633		15039	d	
B 26906		15411	ns c seen	
B 26966		15441	d H e	good the trails
B 29152		15817	d-e	"
B 32894		16459	d-e	
B 35368		16823	ns d seen	
B 38613		18041	d-e	fair
B 38901		18071	e	
B 44457		20262	d-e	



V V Velorum				
Plate	Date	JD	Estimate	Remarks
A3020		14434	d-e	good
MF8418		23828	e	
MF5191		22425	e	
AX1635		24651	d	
AX1993		24830	e	
AX2088		25210	e	
AX1998		24863	[d]	
AX1593		24640	Dis [d]	
AX1584		24636	[d]	
AX529		23919	ns b seen	near by star bt.
AX475		23901	ns d seen	
AX480		23902	ns d seen	
AX505		23911	d-	
AX510		23912	[d]	
AX973		24168	ns a seen	
AX1023		24262	ns d seen	
AX1030		24270	ns c seen	
AX1039		24283	[d]	
AX1432		24502	e	
AX1510		24536	ns d seen	
AX1515		24538	ns b seen	
AX1541		24562	ns b seen	
AX1607		24643	ns b seen	
AX1642		24653	ns d seen	
AX1668		24669	ns c seen	
AX1672		24670	ns b seen	
AX1064		24290	ns. d seen	
AX1150		24318	ns d seen	



158

U V Velorum Plate	Date	JD	Estimate	Remarks
AM 16180		23489	c ?	
AM 16248		23544	ns d seen	
AM 15801		23197	[d seen	Was in spectrum at this time
B 25052		15120	d-e	
B 15657	April 28, 1896	13678	[e	fair
B 13187		13325	d-e	
B 14735	Sept 27, 1895	13464		Slide 388
B 20971		14300	c - !!	Defect on star
B 20974		14300	d	Defect on d.
B 26978		15459	[d	
B 29096		15767	ns d seen	
B 31254		16130	e	
B 40042		18406	d-e	



U V	Velocity			
Plate	Date	JD	Estimate	Remarks



160 Z Octantis marked on B 37997

Arbitrary sequence marked on B 37997

Plate	Date	JD	Estimate	Remarks
B 5684		11619	[g]	
B 22589		14765	[g]	
B 22616		14766	[g]	
B 22656		14776	[d]	
B 36533		17066	h	
B 37997		17803	[g]	
B 38766		18057	[g]	
B 39449		18168	c-d	
B 44832		20330	n s g seen?	
B 4014		11228	f	
B 9677		12638	n s g seen	
B 13888		13377	h-	
B 14284		13408	g	
B 17506		13833	[g]	
B 17779		13871	d	
B 18089		13892	f	
B 18491		13958	h-k	
B 18594		13990	sw h	
B 18723		14017	n s h seen	
B 18920		14037	h	
B 19443		14084	g	
B 19687		14107	[g]	
B 21475		14435	[d]	
B 21573		14448	d	
B 21778		14465	d+	
B 21780		14465	c-d	
B 21807		14479	c	
B 28155		15603	h	
B 32006		16282	g	



Z. Cedantes

Plate	Date	J D	Estimate	Remarks
AX 576		23939	f	fair
AX 634		23963	f	"
AX 693		23975	fg?	
AX 736		23997	g?	
AX 766		24021	h	fair
AX 883		24083	ns g seen	
AX 1054		24286	f	] Good
AX 1059		24289	g	
AX 1097		24299	g-	
AX 1152		24318	fh	] Good
AX 1195		24327	ns h seen?	
AX 1325		24406	h-	
AX 1604		24642	ns g seen	] Good
AX 1614		24646	fh	
AX 1643		24653	ns g seen	
AX 1662		24667	fh	] ?
AX 1721		24697	h-	
AX 1749		24705	ns h seen	
AX 1806		24728	ns g seen?	] ?
AX 1822		24732	ns h seen	
AX 1500		24531	fh?	
AX 1758		24707	h?	] Good
AX 519		23914	h-e	
AX 551		23930	e-	
AX 581		23940	e-e	] "
AX 625		23962	h?	
AX 683		23972	h	
AX 731		23997	fg	] "
AX 1099		24299	g-g	



Plate	Date	JD	Estimate	Remarks
AX 1159		24319	g	Excellent
AX 1203		24328	g	"
AX 1224		24352	h-	"
AX 1266		24371	n s h seen?	"
AX 1619		24647	g	"
AX 1653		24655	g	"
AX 1693		24679	g	"
AX 1750		24705	g	"
AX 1807		24728	g	"
AX 1824		24732	g-	"
AX 1856		24755	g	"
AX 1952		24800	g	"
AX 2049		25183	c	"
AX 1486		24527	d-e	"
AX 1549		24565	d+	"
AX 1827		24733	n s h seen	"
AX 1901		24769	g-	"
AX 1964		24803	g-g	"
AX 2034		25177	g	Excellent
AX 2090		25211	k-	"



Z. Oedautis		JD	Estimate	Remarks
Plate	Date			
B32647		16379	kj	
B34297		16668	R	
B35933		16962	h	



Plate

Date

J.P.

Estimate

Remarks



Date \_\_\_\_\_

57

Estimate

Remarks







Quint (see next page)

TU Februar

Plate	Date	JD	Estimate	Remarks
AX 1858		24756		
AX 1869		24761		
AY 1445		24999		
B 30307		15939		
B 25495		15169		
B 23161		14832		
B 20351		14183		
B 32332		16323		
B 32316		16320		
B 17204		13789		
B 25504		15171		
B 27474		15533		
B 3737		11190	lg	
B 3794		11196	g-1	
B 13969		13383	h-e	
B 14286		13409	h-e	
B 15429		13635	h	
B 15513		13652	with	
B 15643		13673	h	
B 16492		13738	h	ns. o seen? Defect over star
B 16973		13762	h	ns o seen
B 17138		13786	h-e	ns o seen
B 40236		18436	h-e	
B 41640		18868	p-g	
B 44525		20288	p-g	
B 25861		15264	h-e	
B 20004		14147	h	
B 3874		11206	h-h	



**T68** Fibrae marked on B 5914  
 Arbitrary sequence marked on B 5914

Plate	Date	JD	Estimate	Remarks
B 9387		12591		
B 13335		13327		
B 3404		11158	n.s. n seen	
B 3737		11190	n.s. seen	
B 3795		11196	n.s. n seen	
B 3874		11206	n.s. o seen	
B 13969	✓	13383	n.s. o seen	
B 14286		13409	n.s. o seen	
B 15429	✓	13635	n.s. o seen	
B 15513	✓	13652	0-	
B 15643	✓	13673	n.s. o seen	
A Y 1020	✓	24624	n.s. n seen fly	
A Y 1321	✓	24911	n.s. n seen	
A Y 1418	✓	24973	n.s. n seen	
I 17219		13957	n.s. n seen	
A Y 54		23902	l	
A X 498		23908	l	
A X 533		23919	n	
A Y 1445	✓	24999	l	Other var
A X 548		23929	n-o	
A X 611		23960	n.s. o seen	
A X 676		23971	n.s. o seen	
A X 737		23998	n.s. o seen	
A X 769		24023	n.s. o seen	
A X 990		24200	l	
A X 1007		24242	l	
A X 1061		24289	n.s. o seen	
A X 1091		24298	n.s. o seen	



TU Librae

Plate	Date	JD	Estimate	Remarks
B 5914		11869	l	
B 5915		11869	[l	
B 6395		11907	o	
B 11280		12972	[g	
B 13110		13309	ns n seen	
B 13120		13310	ns n seen	
B 14028		13384	ns. o seen	
B 15645	-	13673	ns o seen?	
B 15777		13691	ns o seen	
B 15781		13691	ns n seen	
B 17204	-	13789	ns o seen	
B 20351	-	14183	o	
B 21936		14540	ns n seen	
B 23161	-	14832	sub [l o	
B 23650		14862	ns. o seen	
B 25504	✓	15171	ns o seen	
B 27732		15560	g-h	
B 30307	✓	15939	[l o	
B 32316	-	16320	ns. o seen	
B 32332	-	16323	ns o seen	
B 34209		16662	ns o seen	
B 34476	July 23, 1904?	16685	l	
B 36736		17077	ns n seen	
B 36950		17098	[l o	
B 16774		13751	ns. o seen	



170

TU Librae

Plate	Date	J D	Estimate	Remarks
AX 663		23969	ns. o seen?	not distinct
AX 650		23967	ns. o seen	"
AX 786		24026	ns o seen	"
AX 1048		24285	"	good
AX 1071		24292	"	"
AX 1145		24317	"	"
AX 1219		24348	"	"
AX 1263		24370	"	"
AX 1302		24399	"	"
AX 1574		24623	"	"
AX 1601		24641	"	"
AX 1638		24651	"	"
AX 1683		24672	"	"
AX 1742		24703	"	"
AX 1816		24731	[o k'-l'	"
AX 1852		24753	l	
AX 1885		24766	l	
AX 1133		24312	ns. o seen	
AX 1185		24326	ns o seen	
AX 1211		24342	ns o seen	
AX 1616		24646	ns o seen	
AX 1720		24696	ns. o seen	
AX 1803		24727	l'-l	
AX 1832		24738	k'	
AX 1858		24756	l]	
AX 1869		24761	l~	



TU Libral Plate Date	J D	Estimate	Remarks
AX1670	24669	ns o seen	
AX1689	24678	ns o seen	
AX1835	24739	h	
AX1873	24762	l-l'	
AX1060	24289	ns o seen	
AX1085	24296	ns o seen	
AX1136	24313	ns o seen	
AX1221	24349	ns o seen	
AX1273	24374	ns o seen	
AX1573	24623	ns o seen	
AX1609	24643	ns o seen	
AX473	23900	l'	
AX503	23909	l'	
B18939	14038	ns o seen	
B27398	15530	l'-	
AX478	23901	l'-l	
B16492	13738	ns o seen?	Defied over day
B16973	13762	ns o seen	
B17138	13786	ns o seen	











174

R S Tel

Plate	Date	J D	Estimate	Remarks
AM 2199		16340	f-	27
AM 2309		16397	f-g	2
AM 2320		16400	[f-g]	ef 223
AM 2532		16583	f	e
AM 2629		16607	f-	e-
AM 2652		16614		
AM 2694		16634		
AM 2724		16639	f+	e-
AM 2739		16643	Trailed	4568
AM 2846		16682	e-f	e
AM 2873		16685	e-f	e
AM 2940		16705	f?	e
AM 2990		16724	f	ef
AM 3050		16743	f-g	et
AM 3082		16753	e-f	et
AM 3110		16759	e-f	et
AM 3124		16765	f+	e
AM 3129		16766	f+	et
AM 3406		16933	f+	et
AM 3436		16938	e	et
AM 3488		16964	f	et
AM 3507		16975	f	e
AM 3524		16977	f	e
AM 3552		16988	e-f	e
AM 3579		16999	e-f	e 3123
AM 3616		17007	f	ef
AM 3641		17017	f	e
AM 3732		17051	f-	e-
AM 4540		17450	f	e

Sequence  
in B 25388In boxy craters  
Waf. of the Plate  
valuable



Legume  
m/B 25388

RS Tel Plate	Date	JD	Estimate	Remarks
AM 4563		17465	nj Im	
AM 4613		17493	n5 m see	
AM 4660		17506	m Im	
AM 4767		17683	m-n Im	
AM 4774		17684	l-m m	
AM 4862		17719	m l	
AM 4890		17728	l k	
AM 4972		17760	j-k y	
AM 5041		17792	gh	
AM 5048		17793	h	
AM 5148		17835	gh	
AM 5208		17865	h	
AM 5386		18041	f	
AM 5409		18056	g e-y	
AM 5452		18070	g et	
AM 5537		18099	ff+ e-	
AM 5553		18102	f e-	
AM 5586		18114	l-f et	
AM 5602		18118	l e	
AM 5610		18121	l-e-g e	
AM 5617		18123	f et	
AM 5673		18145	g- e	
AM 5718		18157	l-e-f d-e	
AM 5750		18168	f e	
AM 5843		18205	ff+ et	
AM 5866		18219	l-e e-f 2816	
AM 6027		18405	ff+ d-e	
AM 6049		18419	l-e-g et	



176

RS Tel

Plate

Date

Begin

JD

Estimate

Remarks.

AM 6113

18438

e-f

et

AM 6161

18451

y

e

AM 6201

18466

y+

e

AM 6230

18472

y+

et

AM 6288

18483

y

et

AM 6298

18485

y

e

AM 6354

18502

y

e

AM 6404

18512

y

e

AM 6434

18523

y+

e

AM 6449

18530

y

e-

AM 6576

18561

y

e-

AM 6625

18575

y

e

AM 6643

18588

y

e-

AM 6947

18820

ns m seen

AM 6977

18825

ns j seen

AM 7009

18831

ns m seen

AM 7085

18859

ns j seen<sup>ns</sup>

AM 7108

18863

ns j seen

AM 7171

18885

ns j seen<sup>ns</sup>

AM 7184

18887

ns seen

AM 7227

18912

ns m seen

AM 7266

18919

ns. j seen<sup>ns</sup>

AM 7286

18924

ns seen<sup>ns</sup>

AM 8629

19658

j-k

h?

Faint plate

AM 8975

19917

i

g

AM 10765

20688

p-

et

AM 10771

20689

p+

e

AM 10813

20694

p+

et

AM 10841

20697

p

et



R S Tel

Plate Date

JD

Estimate

Remarks

AM 10921	20710	17	e	
AM 11095	20748	17	e	
AM 11112	20750	j-l	e	
AM 11146	20754	j-l	e	
AM 11156	20755	j-l	e	
AM 11450	20815	j-l	e	
AM 11690	20993	17	e+	
AM 11817	21010	17	e+	
AM 11862	21013	17	e+	
AM 12107	21046	17	e+	
AM 12128	21048	17	e+	
AM 12144	21050	17	d-e	
AM 12746	21169	17	e	
AM 12768	21181	17	e	
AM 12885	21309	17	e	
AM 12893	21311	17+	e	
AM 13401	21424	17	e+	
AM 13411	21426	17+	e+	
AM 13418	21427	17	e+	
AM 13435	21430	17	e	
AM 13441	21437	17+	e	
AM 14128	21776	17	e	
AM 14141	21783	17	e	
AM 14144	21786	17	e	
AM 14161	21789	17	e	
AM 14368	21839	e-y	d-e	
AM 14375	21843	e-p	d-e	
AM 14387	21845			
AM 14740				

Peru



178

RS Tel Plate	Date	JD	Estimate	Remarks
AM 14868		22165	e-	
AM 15291		22514	e-f	
AM 15468		22574	f	
AM 15496		22582	f	
AM 33	July 31, 1899	14867	ef+	3005
AM 15		14862	hJ	X et
AM 137		14904	hJ	X et X sequence of
AM 802		15527	hJ	X et hJ means
AM 808		15532	hJ.	X et hJ bud perhaps
AM 1028		15632	hJ	X et as bright as e
AM 1043		15634	hJ	X et or f (applies only to first sequence)
AM 1236		15872	ns j seen	sequence in B 25388
AM 1252		15885	ns j seen	in B.K.
AM 1278		15897	ns j seen	
AM 1406	June 28, 1902	15929	not there	2721
AM 1414		15933	ns j seen	
AM 1422		15934	ns j seen	
AM 1428		15938	e	
AM 1437		15940	k	ns seen
AM 1461		15943		Map of the box
AM 1487		15960	LI h	fm
AM 1488				valuable
AM 1528		16006	f	Room 37, spec. box

sequence  
from B25388



R S Tel	JD	Estimate		Remarks
Plate Date				
AM 4961	17759	[j.	f+	
AM 5063	17803	[j.	g	
AM 5358	18034	[j.	e-	
AM 5529	18098	[j.	e	
AM 7170	18885	ns seen	ns	
AM 7209	18898	ns seen	ns	
AM 7221	18911	ns seen		
AM 7638	19251	ns seen	ns	
AM 7675	19264	ns seen	ns	
AM 7743	19292	ns seen		
AM 7819	19303	ns seen	ns	
AM 8246	19547	ns seen		
AM 8263	19550	ns seen	?	
AM 8282	19558	ns seen		
AM 8294	19560	e- seen	e	
AM 8334	19567	ns seen	ns	
AM 8361	19571	ns seen		
AM 8389	19588	e	g	
AM 8462	19600	[j.	g	
AM 8494	19604	j-k	g	
AM 8606	19652	k]	g	
AM 8731	19695	k]	g	
AM 8844	19888	[j.	g	
AM 8870	19893	[j.	g	
AM 8890	19897	j-l	f+	
AM 8952	19914	j	f+	
AM 8984	19919	j-	f+	



180

R S Tel  
Plate

Date

JD

Extinction

Remarks

Sequence  
on  
B25388

AM 2299	16396	f	e-f	
AM 2523	16582	f	e-f	
AM 2541	16585	f	e	
AM 2615	16606	f	e-f	
AM 2636	16608	e-f	e-f	
AM 2655	16615	e-f	e-f	
AM 2691	16634	e-f	et	
AM 2763	16652	e-	e-	
AM 2825	16669	e-	e-f	
AM 2897	16694	e	et	
AM 3058	16744	e-	et	
AM 3112	16760	e-	et	
AM 3405	16933	e-	et	
AM 3420	16935	e	et	
AM 3434	16938	e	et	
AM 3513	16976	e	e	
AM 3575	16999	e	et	
AM 3614	17007	e-	e	
AM 3703	17037	e	e-	
AM 3762	17066	e-f	e	
AM 3810	17077	e-f	et 4786	
AM 3822	17080	e-	et	
AM 3873	17098	f	e-	
AM 3928	17124	f	e	
AM 4174	17325	e	et	
AM 4249	17353	f	e-f	
AM 4273	17363	f	h?	
AM 4329	17378	no l seen	✓	
AM 4367	17394	no m seen	✓	



Plotted to here? Sequence  
B 25388 has plots 181

RSTel				
Plate	Date	JD	Estimated	Remarks
AM 4455		17429	n.s. n seen <sup>ns</sup>	
AM 4486		17433	n.s. m seen	
AM 4590		17476	ns m seen <sup>ns</sup>	
AM 4612		17493	ns m seen	
AM 4773		17684	m	
AM 4778		17686	[m	
AM 4820		17706	m	
AM 4878		17727	k]	
AM 4888		17728	k]	
AM 11111		20750	[f	
AM 11145		20754	f-	e? Dyets
AM 11155		20755	f	e
AM 11557		20932	g	e-f
AM 11673		20990	e	et
AM 11710		20995	e	et
AM 11774		21006	e-	e]
AM 11783		21007	e	e]
AM 11802		21009	e	et
AM 11827		21011	e-	et
AM 11846		21012	e-f	e]
AM 12105		21046	e	e
AM 12117		21047	e-	et
AM 12142		21050	e-	et
AM 12507		21135	e-	et
AM 13114		21361	e+	e 3694
AM 13148		21365	[e	et
AM 13167		21368	e-	e]
AM 13187		21372	[e	e]
AM 13390		21421	e	e+



182

beginning  
BuB 25388

RS Tel Plate	Date	J D	Estimate	Remarks
AM13399		21424	e	et
AM13416		21427	e	et
AM13433		21430	e	et
AM13438		21431	e	et
AM13986		21731	e	et
AM13994		21732	e-	e
AM14127		21776	e	d-e
AM14148		21787		e
AM14456		21866	e	e
AM14461		21867		e-
AM14854		22161		et
AM14864		22164	e	et
AM15290		22514	e-	et
AM15304		22520	e	et
AM15466		22573	e	et
AM10640		20655	e	e
AM9061		19930	e-g	e-l
AM9098		19943		f+
AM9115		19945		f+
AM9162		19952		f+
AM9182		19957		f+
AM9238		19973		e-l
AM9296		19982		f+
AM9375		20008	e-g	e-g
AM9387		20012	e-g	e-g
AM9533		20043		f+
AM9554		20047		f+
AM9802		20282	e-g	e
AM9818		20286	e-g	e



Sequence on  
B 25388

RS Tel Plate	Date	JD	Estimated	Remarks
AM 9883		20304	e-	et
AM 9894		20307	e	et
AM 9898		20308	f	et
AM 9907		20313	Per	et
AM 9918		20315	e	et
AM 9926		20324	e-	e-
AM 9935		20327	e-f	e
AM 9969		20330	e	et
AM 9989		20339	e-f	et
AM 10021		20348	e-f	e-
AM 10084		20366	e-f	e
AM 10087		20367	e-f	e-
AM 10096		20373	e-f	e-
AM 10099		20384	e-f	et
AM 10138		20393	e	e
AM 10213		20426	e-f	et
AM 10736		20680	e	et



184

1925phae.

RS Tel	Sequence marked on B	25388
Plate	Date	JD
B 25388		15162
B 3534	June 13, 1889	11167
B 3812	July 13, 1889	11197
B 4984		11481
B 4990		11483
B 6110		11882
B 6130		11883
B 6131		11883
B 9282		12585
B 9283		12585
B 9690		12639
B 9691		12639
B 9692		12639
B 9694		12639
B 9695		12639
B 11939		13057
B 13534		13348
B 14047		13384
B 14495		13442
B 14497		13442
B 11419		12994
B 16157		13716
B 16166		13716
B 17710		13848
B 17833		13875
B 19324		14077
B 19577		14094
B 20478		14189
B 20491		14190

Estimate

Remarks

Leak



RS Tel				
Plate	Date	J D	Estimate	Remarks
B 21079		14375	e	
B 21224		14393	e+ ?	On edge
B 21995		14570	e	995-
B 22070		14585	e+ ?	
B 22479		14750	e+ ?	
B 22513		14751	e-f	
B 23074		14823	e ?	
B 23171		14832	e-f	
B 23481		14851	e	
B 23535		14854	e	1028
B 23667		14862	e	
B 23969		14891	e+	
B 25881		15264	e-f	
B 27437		15532	e-e	
B 27444		15532	e	
B 27153		15486	—	2165
B 27648		15547	d-e	
B 27846		15575	e-f	
B 27930		15586	e+	
B 29488		15868	u+	
B 30298		15938	h	
B 30363		15945	m	
B 30645		16016	h	
B 31578		16237	f	
B 31645		16240	e-f	
B 32352		16327	f	
B 32629		16361	f	
B 33336		16583	e-f	
B 33856		16626	e-f	
B 34234		16663	e-f	



RS Tel. Plate	Date	JD	Estimate	Remarks
B 35684		16934	e-f	
B 35849		16957	e-f	
B 36431		17039	e-f	
B 36896		17095	e-f	
B 37312		17698	R	
B 37697		17756	PT	
B 37977		17804	PT+	
B 38034		17813	f	
B 38159		17836	f	
B 38822		18065	fe	
B 39040	May 28, 1908	18090	PT	
B 11633		13030	Tej	
B 25530		15175	et	} Estimated second time
B 19483		14085	et	
B 25343		15158	e	
B 34025		16640	e-f	



RS Tel Plate	Sequence on B Date	J D	25388 Estimate	Remarks.
AM 22		14863	e+	
AM 162		14925	e+	
AM 173		14927	e+	
AM 460		15148	e+	
AM 533		15222	e+	127
AM 585		15235	e-	
AM 631		15267	e+	
AM 644		15274	e+	
AM 787		15519	eJ	
AM 816		15533	e	
AM 908		15575	e	
AM 938		15590	e+	
AM 1036		15633	eJ	
AM 1061		15646	e	
AM 1238		15872	not seen	
AM 1260		15887	not seen	
AM 1286		15898	not seen	
AM 1423		15934	not seen	
AM 1435		15940	[h or <u>Si</u>	2717
AM 1447		15941	not seen	
AM 1460		15943	e	
AM 1471		15945	h	
AM 1535		16008	h	
AM 1584		16022	not seen	
AM 1835		16183	h	
AM 1911		16240	e-	282
AM 1927		16242	e	268
AM 1959		16254	e-	
AM 2084		16297	e	



188

RS Tel  
Plate

Date

JD

estimate

AM 2101

16302

f

AM 2121

16310

e-

AM 2128

16311

e-f

AM 2243

16359

Tel

AM 2288

16379

f

AM 2571

16593

e

AM 2598

16604

e-f

AM 2627

16607

e-

AM 2712

16636

e

AM 2755

16650

e

AM 2772

16653

e

AM 2806

16667

e-

AM 2874

16685

e

AM 2914

16697

f

AM 2944

16706

e

AM 3003

16726

e-

AM 3066

16745

e

AM 3463

16957

e

AM 3479

16960

e-f

AM 3544

16981

e

AM 3586

17000

e+

AM 3690

17032

e-d

AM 3719

17039

e

AM 3784

17069

e

AM 3842

17094

e+

AM 3874

17098

e-

AM 4149

17297

e+

AM 4204

17335

e

AM 4246

17352

f



RS Tel Plate	Date	JD	Estimate	Remarks
AM 4314		17376	ns h seen	
AM 4372		17401	ns b seen	
AM 4394		17404	ns m seen	3014
AM 4464		17430	ns m seen	
AM 4558		17464	ns h seen	
AM 4639		17499	ns b seen	
AM 4809		17704	ns i seen	
AM 4919		17738	h?	
AM 4955		17758	BT	
AM 5001		17772	BT	
AM 5064		17803	g-	
AM 5171		17843	g-	
AM 5332		18026	e-	
AM 5383		18041	e	
AM 5451		18070	e	
AM 5486		18082	e	
AM 5562		18109	e-	
AM 5669		18145	e	
AM 5695		18150	et	
AM 5730		18159	et	
AM 5785		18187	et	
AM 5791		18190	e	
AM 5959		18361	e	
AM 5998		18391	ns. e not seen from plate	3019
AM 6069		18422	e	
AM 6087		18434	e	
AM 6120		18439	—	1011
AM 6143		18444	e	
AM 6160		18451	e-f	



190

R S Tel  
Plate

Date

JD

Estimate

Remarks

AM 6207	18467	e-f	
AM 6277	18481	e-f	
AM 6313	18494	f	
AM 6335	18498	f	
AM 6379	18507	e	
AM 6483	18538	e-f	
AM 6899	18791	ns e seen	
AM 6916	18804	ns g seen	
AM 7013	18832	ns g seen	
AM 7070	18856	ns i seen	
AM 7090	18860	ns i seen	
AM 7204	18897	ns. e seen	
AM 7251	18917	ns i seen	
AM 7384	19136	ns e seen	
AM 7403	19154	ns e seen	
AM 7418	19177	ns h seen	
AM 7428	19180	ns h seen	
AM 7441	19196	ns f seen	
AM 7453	19203	ns g seen	
AM 7484	19213	ns g seen	
AM 7507	19220	ns f seen	
AM 7524	19224	ns h seen	
AM 7555	19234	ns i seen	
AM 7561	19235	ns h seen	
AM 7590	19239	ns g seen	
AM 7630	19250	ns i seen	
AM 7660	19254	ns i seen	
AM 7740	19290	ns e seen	
AM 7801	19301	ns g seen	



RS Tel	Date	J D	Estimate	Remarks
AM 7845		19312	ns n seen	
AM 7862		19323	ns. g seen	
AM 8190		19540	ns g seen	
AM 8199		19541	ns h seen	
AM 8258		19548	ns h seen	
AM 8293		19560	ns c seen	
AM 8355		19569	ns h seen	
AM 8372		19575	ns i seen	
AM 8396		19589	i ?	
AM 8457		19599	ns [h] ?	
AM 8566		19634	[J]	
AM 8588		19648	[J]	
AM 8914		19903	h-y	
AM 9092		19942	y	
AM 9116		19945	e-y	
AM 9319		19987	e-y	
AM 9385		20012	e-y	
AM 9822		20287	[F]	
AM 9854		20295	[e]	
AM 9908		20313	e	
AM 9922		20316	eJ	
AM 9930		20325	e	
AM 9944		20329	e	3589
AM 9970		20336	e+	
AM 9978		20337	e+	
AM 10006		20343	e	
AM 10022		20348	e	
AM 10028		20350	e	
AM 10030		20352	e	



192

RS Tel Plate	Date	J D	Estimate	Remarks
AM10035		20353	e-	
AM10040		20355	e+	
AM10092		20372	e	
AM10097		20380	e- ?	
AM10107		20386	e-	
AM10133		20392	e	
AM10221		20429	e+	
AM10260		20441	f+	
AM10742		20681	e	
AM10781		20690	e	
AM10805		20693	e+	
AM10823		20695	eJ	
AM10833		20696	eJ	
AM10904		20708	e-d	
AM10912		20709	e-d	
AM11102		20749	e	
AM11166		20756	e-	
AM11687		20992	eJ	
AM11700		20994	eJ	
AM11787		21007	eJ	
AM11804		21009	e-d	
AM11816		21010	e-d	
AM11828		21011	e-d	
AM12118		21047	e-d	
AM12152		21051	e-d	
AM12228		21065	e	
AM12442		21126	eJ	
AM12745		21169	eJ	
AM12884		21309	eJ	



RS Tel Plate	Date	JD	Estimate	Remarks
AM13196		21374	e-f	
AM13404		21425	ef	
AM13422		21428	et	
AM13446		21438	ef	
AM14166		21790	e	
AM14231		21804	e-d	
AM14856		22161	e	
AM15296		22516	e-d	
AM15474		22577	d-e	
AM15503		22584	et	
AM10270		20447	e-	
AM10685		20664	e	
AM10711		20668	e-	
AM10724		20670	et	
AT123		18364	ef	
AT127		18365	ef	3026
AT134		18366	ef	
AT149		18368	ef	
AT156		18369	et	
AT362		18483	e	
AT471		18553	e-	
AT496		18574	e-	
AT540		18599	et	
AT704		18761	not seen	
AM1917		16241	e-	
AM1952		16253	e-f	
AM1960		16254	f	
AM2085		16297	et	
AM2109		16308	e-f	



194

RSTel  
Plate

Date

JD

Estimate

Remarks

Am 2129	16311	e-	
Am 2147	16319	g or f?	
Am 2244	16359	eff	
Am 2261	16361	e-	
Am 2280	16376	not there	27105
Am 2572	16593	e	
Am 2618	16606	fe	
Am 2639	16608	e-	
Am 2713	16636	e+	
Am 2756	16650	e	
Am 2797	16663	e-	
Am 2854	16683	e	
Am 2916	16697	e+	
Am 2959	16711	e	
Am 3002	16726	e	
Am 3392	16922	e]	
Am 3448	16943	e]	
Am 3496	16968	e]	
Am 3537	16979	e+	
Am 3625	17009	e+	
Am 3655	17019	e+	
Am 3689	17032	e-d	
Am 3802	17076	e-d	
Am 3882	17105	e-d	
Am 4205	17335	e	
Am 4269	17360	h?	
Am 4311	17376	ns seen	
Am 4365	17394	ns seen	
Am 4384	17403	ns seen	



RS Tel Plate	Date	JD	Estimate	Remarks
AM 4527		17447	ns n see	
AM 4539		17450	ns n see	
AM 4562		17465	ns n see	
AM 4620		17495	ns l see	
AM 4804		17703	ns l see	
AM 4931		17747	f	4521
AM 4954		17758	f - f	
AM 5013		17774	e - f	
AM 5024		17787	g	
AM 5090		17813	f - f	
AM 5114		17820	p + f	
AM 5340		18027	e	
AM 5390		18042	e	
AM 5444		18069	e +	
AM 5576		18111	e	
AM 5640		18130	e J	
AM 5683		18148	e +	
AM 6228		18472	e J	
AM 6338		18499	e	
AM 6343		18500	e J	
AM 6347		18501	e +	
AM 6374		18506	e - f	
AM 6454		18531	e f	
AM 6592		18565	e J	
AM 6613		18571	e +	
AM 6946		18820	ns l see	
AM 6952		18821	ns g see	
AM 7033		18848	ns f see	
AM 7063		18855	ns j see	



196

RS Tel Plate	Date	JD	Estimate	Remarks
AM 7163		18884	no h seen	
AM 7458		19204	ns g seen	
AM 7530		19225	ns g seen	
AM 7549		19233	ns g seen	
AM 7651		19253	ns g seen	
AM 7841		19314	ns g seen	
AM 8301		19561	ns g seen	
AM 8307		19562	ns g seen	
AM 8369		19572	ns g seen	
AM 8390		19588	ns g seen	
AM 8469		19601	ns e seen	
AM 8492		19604	g	
AM 8522		19617	g	
AM 8598		19650	ns e seen	
AM 8937		19911	f	
AM 8944		19912	f	
AM 8999		19922	f	
AM 9068		19931	f	
AM 9146		19950	f	
AM 9197		19959	f	
AM 9267		19977	e	
AM 9304		19985	e	
AM 9336		19989	e	
AM 9860		20297	e	
AM 9889		20306	e	
AM 9891		20307	e+	
MT 4482	Aug 20, 1919	22191	e	th up again
MT 7054	Sept 10, 1920	22578	e	?
AM 9943		20329	e+	



R S Tel Plate Date	JD	Estimate	Remarks
AM 9983	20338	e+	
AM 10088	20367	e	
AM 10093	20372	e-	
AM 10098	20384	ns e seen?	
AM 10146	20394	e	
AM 10180	20414	e	
AM 10570	20626	e	
AM 10764	20688	e-	
AM 10788	20691	e-d	
AM 10822	20695	eJ	
AM 10902	20708	e	
AM 11084	20747	e-	
AM 11276	20769	e-	
AM 11689	20993	eJ	
AM 11775	21006	eJ	
AM 11785	21007	d-e	
AM 11805	21009	d-e	
AM 11829	21011	eJ	
AM 12127	21048	e+	
AM 12208	21062	e-f	
AM 12216	21063	e-f	
AM 12235	21066	e	
AM 13400	21424	e	
AM 13417	21427	e+	
AM 13434	21430		Perm
AM 13440	21437	e-d	
AM 14154	21788	eJ	
AM 14274	21806	eJ	
AM 14682	22083	eJ	



198

RS Tel

Plate

Date

JD

Estimate

Remarks

AM 15021	22225	e]	
AM 15294	22516	e]	
AM 1470	15945	[g ?	
AM 3720	17039	e	
AM 4920	17738	e	
AM 10606	20651	e+	
AM 10641	20655	e+	
AM 10718	20669	e+	
AM 10939	20712		Body cracked plate
AM 11916	21022	e]	
AM 12032	21035	e+	
AM 12064	21039	e+	
AM 13333	21402	e+ ?	
AM 13480	21447	e+	
AM 13489	21450	e+	
AM 13503	21453	e+	
AM 13513	21455	e+	
AM 14062	21757	e]	
AM 14070	21758	e+	
AM 14281	21817	e+	
AM 14288	21819	e+	
AM 10270	20447	e	
AM 10711	20668	e	
AM 10724	20670	e	
AM 10995	20724	e-	
AM 11006	20726	e-	
AM 11904	21021	e]	
AM 11928	21023	e	
AM 11953	21024	e	



RS Tel Plate	Date	JD	Estimate	Remarks
AM12305		21080	e	
AM12349		21094	et	
AM12353		21095	et	
AM13012		21334	e]	
AM13256		21391	e	
AM13494		21451	e-	
AM13523		21457	e	
AM14262		21810	e	
AM14268		21812	et	
AM14286		21818	e	
AM14927		22188	e-	
AM14959		22197	e]	
AM4858		17719	no i seen	
AM8565		19634	?	
AM8578		19645	Fe ?	
AM10427		20605	et	
AM10623		20653	e	
AM10715		20669	et	
AM10722		20670	e]	
AM10937		20712	et	4172
AM10952		20716	Poor plate	4112
AM11915		21022	e	
AM11926		21023	e	
AM12285		21077	et	
AM12342		21093	e]	
AM12592		21153	et	
AM13022		21335	et	
AM13040		21337	e]	
AM13254		21391	e	

905



200

RS Tel

Plate	Date	JD	Estimate	Remarks
AM13488		21450	e+	On edge
AM13492		21451	e	
AM13497		21452	e]	?
AM14022		21749	e]	
AM14048		21755	e]	
AM14083		21760	d-e	
AM14200		21810	d-e	
AM14266		21812	e+	
AM14782		22131	e	
AM14807		22136	e+	
AM14885		22173	e]	
AM14958		22197	e]	
AM15376		22541	e+	
AK323	May 27, 1909	18454	e-	
AK364		18483	e	
AK367		18486	e+	
AK511		18582	e	
AK410		18516	e]	
AK380		18493	e+	
AK514		18585	e-	
AK553		18603	e-d	
AK696		18750	ns l seen	
AK744	?	18813	ns i seen	
AM5712		18156	e+	
AM5752		18171	e	
AM5778		18183	e	
AM5820		18199	d-e	
AM5854		18209	d-e	
AM6011		18395	d-e	



Aug 17

201

RS Tel Plate	Date	JD	Estimate	Remarks
AM 6114		18438	e-	
AK 233		18398	e+	
AK 282		18427	e+	
AK 288		18438	d-e	
AK 435		18529	e-	
AK 508		18576	e-	
AM 3775		17068	e+	
AM 3859		17096	e-f	
AM 3922		17121	e	
AM 4169		17324	eJ	
AM 4235		17345	eJ	
AM 4274		17363	g-h	
AM 4321		17377	ns. l seen	
AM 4331		17378	ns m seen	
AM 4369		17394	ns m seen	
AM 4457		17429	ns n seen?	
AM 4480		17432	ns n seen	
AM 73		14874	e	
AM 80		14875	e	
AM 124		14898	d-e	
AM 225		14942	d-e	
AM 366		15071	d-e	
AM 426		15117	e	
AM 555		15226	e	
AM 656		15278	e	
AM 833		15542		Valuable map of sky
AM 879		15560	e+	
AK 155		18369	eJ	
AK 198		18381	e	



202

RS Tel

Plate

Date

JD

Estimate

Remarks

A 310

18440

e-

A 359

18479

[e]

A 361

18483

[e]

A 366

18486

e-f

A 379

18493

[e]

A 395

18498

[e]

A 397

18503

e-

A 470

18553

e-

A 512

18582

e-

A 529

18596

e-

A 694

18750

ns green

A 748

18813

ns green

A 960

15602

e +

A 988

15609

e +

A 1002

15619

[e]

A 1213

15868

ns m seen

A 2212

16344

e

A 1225

15870

ns n seen?

Defects

A 1333

15912

ns green?

A 1351

15914

ns green

A 1374

15918

ns green

A 1383

15925

ns green

A 1397

15927

sus f h?

A 1498

15974

ns green

A 1640

16034

f-g

A 1829

16177

f-g

A 1852

16208

e-f

A 1862

16222

e-f

A 1895

16233

e-f



RS Tel Plate	Date	ID	Estimate	Remarks
Am 1989		16268	e-f	
Am 2024		16279	f	
Am 2051		16284	f	
Am 2177		16337	e-	
Am 2191		16339	e	
Am 5034		17789	g	
Am 5104		17816	[e	
Am 5450		18070	e	
Am 5575		18111	e+	
Am 5592		18115	e]	
Am 5607		18119	e]	
Am 5688		18149	e]	
Am 5708		18155	e]	
Am 5751		18169	e	
Am 6024		18404	e+	
Am 6055		18420	e]	
Am 6105		18436	e]	
Am 6190		18457	e]	
Am 6198		18466	e]	
Am 6239		18475	e	
Am 6287		18483	e	
Am 6348		18501	e]	
Am 6398		18511	e+	
Am 6410		18513	e	
Am 6432		18523	e+	
Am 6448		18530	e-	
Am 6481		18537	e-	
Am 6582		18562	e+	
Am 6861		18766	no e seen	



204

RS Tel  
Plate

Date

JD

Estimate

Remarks

Am 6927

~~18818~~

ns h seen

Am 6971

18824

ns m seen

Am 6975

18825

ns f seen

Am 7069

18856

ns g seen

Am 7310

18939

ns j seen

Am 7394

19149

h-

Am 7405

19157

h-i

Am 7411

19159

ns h seen

Am 7452

19203

ns n seen

Am 7461

19205

ns h seen

Am 7495

19215

ns l seen

Am 7505

19220

ns l seen

4519

Am 7515

19223

ns l seen

Am 7541

19231

ns n seen

Am 7567

19236

ns m seen

Am 7607

19241

ns h seen

Am 7625

19249

ns h seen

Am 7629

19250

ns m seen



RSTel Plate	Date	JD	Estimate	Remarks
B 7878	?		ns j seen	
B 13575		13349	e-f	
B 17445		13826	e+	
B 22028		14575	e+	
B 23413		14847	eJ	
B 27595		15542	e+	
B 30360		15945	[i]	sequence off
B 31469		16222	<del>e</del>	
B 35780		16943	eJ	
B 35817		16948	eJ	
B 36793		17080	e+	
B 36869		17094	e-	
B 36958		17096	e-	
B 37539		17732	g	
B 39091		18098	<del>e</del>	
B 40062		18406	e	
B 41606		18866	ns m seen	
B 43693		19903	e-f	
B 43713		19912	e-f	
B 44734		20316	e-	
B 44872		20339	eJ	
B 46595		20993	e+	
B 46778		21006	e+	
B 46869		21010	e+	
B 46899		21011	e	
B 47077		21019	e+	
B 47325		21026	e+	
B 47324		21026	e+	
B 47267		21025	e-	



206

RS Tel  
Plate

Date

JD

Estimate

Remarks

B 47266

21025

e

B 45484

20724

e-

B 32651

19396

e-f, near if.

B 33835

16625

e

B 3716

11187

e

B 40257

May 11, 1909

18438

e

B 40378

May 30, 1909

18457

Fe

B 40486

18484

e-

B 42440

19225

ns m seen

B 42738

19312

ns n seen

B 43511

19662

If

B 43696

19903

If

B 43716

19912

If

B 43745

19926

If

B 43770

19929

If

B 43811

19932

If

B 43812

19932

If

B 44109

19999

If

B 44534

20288

Fe

B 44545

20289

e

B 44721

20316

e

B 44725

20316

e

B 44794

20332

e

B 44795

20332

not there

3639

B 44812

20334

e

B 44873

20339

e

B 44890

20341

e

B 44947

20357

e

B 44971

20359

e



RS Tel	Plate	Date	J.D.	Estimate	Remarks
	B 44976		20359	e	near edge
	B 47189		21023	e	
	B 47268		21025	e	
	B 47269		21025	e	
	B 47326		21026	e	
	B 47328		21026	e	
	B 47329		21026	e	
	B 47329		21026	e	
	B 47537		21035	e	
	B 47712		21045	e+	
	B 48014		21067	e	
	B 48171		21094	e+	
	B 48182		21099	e+	
	B 50074		21335	e	
	B 51108		21398	✓	Box & cracked plate
	B 51208		21403	e	
	B 51498		21428	e+	
	B 51510		21429	[e	
	B 51521		21430	e	
	B 51526		21430	e	
1122					
	A 535		23919	e-	
	A 1946		24798	d-e	
	AM 16365		23648	[e	
	AM 15797		23194	e-f	
	AM 15813		23199	e-f	
	AM 15843		23209	e-f	
	AM 15878		23226	g-h	
	AM 15893		23233	g-h	



208

RS Tel  
Plate

Date

JD

Estimate

Remarks

AM 15910

23235

h

AM 15935

23248

hJ

AM 15970

23255

h

AM 16024

23279

h-

AM 16060

23306

l

AM 16069

23311

Le

AM 16099

23337

Sus Lim

AM 16237

23536

e

AM 16263

23565

e

AM 16289

23575

e-

AM 16320

23610

e-

AM 16354

23640

e

AM 16387

23664

e+

AM 16420

23688

e+

AM 16426

23697

e+

AX 613

23960

e

AX 645

23965

e

AX 725

23993

Je

AX 1049

24285

ns n seen

AX 1106

24300

ns n seen

AX 1284

24378

ns n seen

AX 1316

24404

ns n seen

AX 1360

24432

Sus Im

AX 1575

24623

e-f

AX 1625

24648

e-f

AX 1650

24654

e

AX 1757

24706

eJ

AX 1853

24754

e-

AX 1919

24787

e-f



RS Tel  
Plate  
AX 2015  
AM 907  
1169  
also.

Date

JD

25157

15575

Estimate

e-

ej

Remarks

red + blue



SY Aquarii		marked on B 13319		
Arbitrary Sequence		marked on B 13319		
Plate	Date	JD	Estimate	Remarks
B 6277	June 11, 1891	11895	g <sup>1</sup> -h	
B 6313	June 13, 1891	11897	h	
B 10192	Aug 21, 1893	12697	f-g	
B 10193	Aug 21, 1893	12697	f-g	
B 10498	Oct 25, 1893	12762	l	
B 10499	"	12762	k-l	
B 11216	May 21, 1894	12970		681
B 11254	May 22, 1894	12971	l or bter	
B 13319	May 11, 1895	13325	c-d	
B 13716	June 8, 1895	13353	d-e	
B 19388	June 3, 1897	14079	g <sup>1</sup>	
B 19787	July 6, 1897	14112	e	
B 20756	Nov. 17, 1897	14246	e-	
B 20792	Nov. 19, 1897	14248	d-e	
B 21424	Nov. 16, 1898	14426	f	
B 21626	June 10, 1898	14451	le	
B 21684	June 14, 1898	14455		961
B 22178	Nov. 11, 1898	14610 <sup>OK</sup> 5	eJ	
B 23250	July 2, 1899	14838	c-d	
B 23287	July 5, 1899	14841	e?	On edge of
B 23372	July 8, 1899	14844	e	
B 23390	July 10, 1899	14846	e-f	
B 23831	Aug 14, 1899	14881	e	
B 23888	Aug 17, 1899	14884	e	
B 24290	Oct 2, 1899	14930	f?	
B 25575		15190	g+	
B 26128		15276	dfe.?	On edge
B 26178		15280	d-e?	



3 Y Aquarii Plate Date	J D	Estimate	Remarks
B 26211	15281	b-e	
B 26395	15304	f-g ?	On edge
B 26428	15305	f-g	
B 26619	15341	f	
B 26656	15343	f+	
B 26697	15345	e-	
B 27801	15562	f	
B 27980	15590	f-g	
B 27985	15590	f-g	
B 28011	15591	f-g	
B 28149	15600	f	
B 28583	15649	d-	
B 28633	15661	c	
B 28787	15701	e+	
B 29824	15896	e-	
B 30049	15914	e	
B 30200	15927	e-f	
B 30403	15946	g	
B 31982	16272	ge	
B 32135	16302	c	
B 32228	16311	d	
B 32259	16312	d	
B 32436	16340	e+	
B 32592	16360	e	
B 32657	16396	g	
B 33941	16634	g	
B 33990	16636	[g]	
B 34056	16643	g'+	
B 34172	16654	g'	



Sy Aquarii Plate	Date	JD	Estimate	Remarks
B 34394		16682	e+	
B 34421		16683	d-e	
B 34479		16685	e	
B 34543		16694	d ?	D feed on star
B 36205		17010	f	
B 36291		17021	f-g	
B 36407		17038	g	
B 36446		17039	g+	
B 36483		17049	f-g	
B 36589		17068	f	
B 36668		17075	f+	
B 36899		17095	d-e	
B 37049		17124	d	
B 37168		17166	d-e	
B 37650		17747	f	
B 39227		18114	e-f	
B 39258		18119	f	
B 40543		18487	d-e	
B 40554		18488	d-e	
B 40663		18514	e+	
B 41496		18848	e-f	
B 41696		18871	e	
B 43940		19961	f	
B 46002		20776		cracked
B 53423		23345	f-g	
B 53427		23353	f-g	



SV Aquarii Plate	Date	J D	Estimate	Remarks
AX 290		23725	e+	
AX 293		23726	e	
AX 331		23752	f-	
AX 567		23934	f	
AX 573		23935	de-f	
AX 599		23946	e	
AX 604		23949	e	
AX 628		23962	e+	
AX 646		23965	e-f	
AX 659		23968	e+f	
AX 679		23971	e-f	
AX 720		23992	f-	
AX 761		24018	f	
AX 868		24077	gf+	
AX 890		24086	de-y	
AX 791		24032	e-	
AX 1081		24294	d-e	
AX 1101		24299	d-e	
AX 1161		24319	d-	
AX 1169		24322	d-e	
AX 1189		24326	d	
AX 1205		24328	d-e	
AX 1226		24352	c	3 Frail
AX 1290		24381	f	
AX 1306		24401	f-g	
AX 1314		24403	g+	
AX 1396		24490	g	
AX 1622		24647	g+	
AX 1658		24656	g+	



214

Sy Aquarii	Plate	Date	JD	Estimate	Remark
	AX1701		24681	g1+	
	AX1714	June 19, 1926	24686	g1	
	AX1771		24710	e-y	
	AX1772		24710	e-p	
	AX1808		24728	e	
	AX1831		24735	e	
	AX1844		24744	d	
	AX1848		24745	d	
	AX1870		24761	c	
	AX1897		24768	c	
	AX1907		24772	c	
	AX1927		24789	d	
	AX1936		24791	d-	
	AX1970		24814	e-y	
	AX2009		25152	e	
	AX2013		25153	d-	
	AX2027		25172	d	
	AX2028		25176	d+	
	AX2060		25197	[d	



Sy Aquarii  
 Plate Date

	J D	Estimate	Remarks
AC 24978	23375	e	
AC 25632	24048	d?	Faint
AC 26429	24769	c	
AC 26521	24825	f	
AM 15830	23206	f-e	
AM 15888	23232	f	
AM 15963	23253	e-f	
AM 15982	23260	f	
AM 16006	23270	f	
AM 16110	23339	g-	
AM 16316	23608	d-e	
AM 16368	23648	f	
AM 16397	23666	f	
AM 15829	23206	e+	
AM 16066	23307	e-f	
AM 16081	23318	f-f?	Faint
AM 16240	23536	f-g	
AM 16337	23618	d-f	
AM 16345	23619	e	
AM 16373	23649	e-f	
AM 16395	23666	e-f	
AM 16438	23702	e	
AM 4218	17341	d-e	
AM 4272	17360	d	
AM 4341	17384	e-	
AM 4405	17405	g	
AM 4423	17413	g+	
AM 4434	17416	g+	
AM 4476	17431	g	



SY Aquarii

Plate Date

JD

Estimate

Remarks

Am 4557

17462

f-

Am 4626

17496

3043

Am 4679

17525

f+

Am 4841

17711

g-

Am 4872

17725

g

Am 4965

17759

d-e

Am 4984

17766

d-e

Am 5006

17773

d-e

Am 5117

17820

f

Am 5176

17847

f+

Am 5194

17858

e-

Am 5244

17886

e

Am 5643

18130

g

Am 5665

18144"

g

Am 5742

18160

g

Am 5789

18188

e-

Am 5809

18197

e-

Am 5893

18254

e-

Am 6299

18485

d

Am 6305

18487

d

Am 6337

18498

d

Am 6344

18500

c

Am 6353

18502

d

Am 6363

18504

d-

Am 6396

18510

[d

Am 6424

18516

e+

Am 6456

18531

e+

Am 6590

18563

g

Am 6594

18565

f &amp; g



SY Aquarius				
Plate	Date	J D	Estimate	Remarks
AM 6612		18570	g	
AM 6661		18592	as seen	
AM 6736		18613	e - j	
AM 6741		18614	f j	
AM 6761		18617	e - j	
AM 7045		18851	e	
AM 7059		18854	[e	
AM 7117		18864	e -	
AM 7133		18867	e	



218

(9 47E)  
23 + 15For 6 series. 21<sup>h</sup>. -15 (0 07 W)  
C<sub>12</sub> Aug 29, 1919 C<sub>12</sub> seemed to go better  
than D<sub>11</sub>. Plate was better

MF 4717

C<sub>12</sub> Aug 29, 1919 MF 4712D<sub>11</sub>

1	3.9	6.59	708	3	8	7.05	same
2	4.0	6.99	708	3	8	7.38	
3	4.2	7.29		2	4.2	7.44	
4	4.2	7.59		4	3.0	7.58	
5	4.5	7.89		5	4.3	7.67	
6	5.1	8.31		6	?	7.69	
7	5.2	8.53		8	4.5	7.81	
8	4.0	8.71	8.80	7	4.8	7.91	
9	4.7	9.12	9.21	9	5.1	8.35	
9	5.0	9.16	9.25	10	5.0	8.48	
11	5.3	9.48	9.57	11	5.2	8.55	
12	5.5	9.79	9.88	12	4.5	8.90	
13	6.1	10.00	10.09	13	4.3	9.28	
15	5.9	10.05	10.14	14	5.0	9.58	
14	6.1	10.12	10.21	15	5.9	10.01	
16	6.9	10.60	10.69	16	5.9	10.02	
17	7.0	10.87	10.96	17	6.0	10.25	
17a	7.4	11.32	11.41	18	6.2	10.42	
18	7.6	11.54	11.63	19	6.7	10.43	
19	7.9	11.71	11.80	20	6.9	10.57	
19a	8.0	12.06	12.15	24	7.0	10.61	
20	8.0	12.14	12.23	22	7.0	10.62	
21	8.1	12.47	12.56	21	7.0	10.66	
21a	8.4	12.90	12.99	23	7.2	10.74	
22	8.5	13.16	13.25	25	7.6	11.36	
23	8.8	13.27	13.36	26	7.9	11.47	
24	8.9	13.70	13.79	27	8.0	11.66	
25	8.9	13.74	13.83	28	8.0	11.74	
26	9.0	13.92	14.01	29	8.1	12.09	
28	9.5	14.07	14.16	30	8.5	12.57	
27		14.26					



Aug 29, 1919 (0 26 W) Corr (-08)  
 meas. of sequence as given on page 56

(0 41 W)

219

MF 4715	21	20	-48	MF 6689	with e	6.9	✓	10.77	Rev May 11, 1920	1069
with e	68	10.73	1065	series f	7.1	11.03	1095	7.4	11.16	1108
series f	7.1	11.03	1095	MF 6680	h	7.8	✓	11.50	1142	1142
MF 4706	h	7.6	11.52	6691	i	8.5		12.15	12.07	12.07
4712	i	8.3	12.60	6684	j	9.2		12.81	12.73	12.73
4717	j	8.9	13.30	h	ns			13.25	13.17	13.17
h	ns	14.2	14.12	l	ns					
l	9.5	14.23	14.15							

(0 18 W)

MF 6304	(0 54 W)	July 14, 1920	Seq. transferred as on end cover	Rev May 11, 1920	MF 6406	e	7.2	1069	July 21, 1920	1061
with e	7.1	(-08)	10.63	10.55	series f	7.5	10.96	1088	10.86	10.86
series f	7.5		11.23	11.15	with h	7.7	11.12		11.04	11.04
MF 6296	h	7.8	12.11	12.03	series i	8.4	11.83		11.75	11.75
6301	i	8.6	12.84	12.76	6396	j	9.1	12.75	12.67	12.67
6307	j	9.1	13.27	13.19	6400	h	ns	13.3	13.22	13.22
h	ns		14.26	14.12	6407	l	9.7	13.8	13.72	13.72
l	9.8	14.7	14.26	14.12						

Av of the 4 above plates, considering the errors  
 h too faint to add in important parts.

e	10.62
f	10.94
h	11.26
i	12.02
j	12.78

Adopted final sequence  
 l (between j & h) 13.89 13.86  
 (Decided this was too faint)

Extra notes (as I interpreted)  
 letters bold series

MF 4712	D11.
cont.	
31	9.0 12.91
32	9.0 12.99
33	? 13.06
34	9.2 13.40
35	9.5 13.79

e-f	= 10.90	Σg	= 11.15
f-h	= 11.10	g-j	= 11.00
h-i	= 11.64	j-l	= 10.98
i-j	= 12.40	g-l	= 10.90
j-h	= l = 13.86		
f-g	= 11.0		
g	= 11.10		
g-h	= 11.18		



220

Aug 11, 1970

0 59 W

20.00-75

For U. S. Univ.

h(0 34 E)

2300 +15

Aug 11, 1970

+09

MT 6684

(73)

MT 6691

C<sub>12</sub>

2	?	610	(+40)	6.52	1	3.5	659	
1	3.5?	687		7.29	2	3.7	699	
4	4.4	747			3	4.0	729	
5	4.5	768			4	4.1	759	
3	4.8	769			5	4.2	789	
7	4.9	800			6	4.9	831	
8	4.9	801			7	4.9	853	
6	5.0	815			8	Edge	871	
10	5.1	845			10	4.0	912	9.21
11	5.3	855			9	4.2	916	9.25
9	4.0	863		9.05			948	9.57
12	4.1	876		9.18	11	4.5	979	9.88
13	4.9	916		9.58	12	5.0	10.00	10.09
14	4.9	933		9.75	13	5.7	10.05	10.14
15	5.4	960		10.02	15	5.8	10.12	10.21
16	5.5	962		10.04	14	5.9	10.60	10.69
17	5.9	998		10.40	16	6.9	10.87	10.96
18	6.5	1022		10.64	17	7.1	11.32	11.41
19	6.5	1033		10.75	17a	7.8	11.54	11.63
20	6.9	1043		10.85	18	7.9	11.71	11.80
21	7.0	1081		11.23	19	8.0	12.06	12.15
22	7.2	1089		11.31	19a	8.2	12.14	12.23
23	—	11.00		11.42	20	8.7	12.47	12.56
24	7.7	1117		11.59	21	9.0	12.90	12.99
25	7.9	1145		11.87	21a	9.4	13.16	13.25
26	8.1	1183		12.25	22		13.27	13.36
27	8.2	1187		12.29	23		13.70	13.79
28	8.5	1208		12.50	24		13.74	13.83
29	8.7	1229		12.71	25		13.92	14.01
30	8.5	1234		12.76	26		14.07	14.16
32	9.5	1322		13.64	28			
33	9.5	1331		13.73				



Aug 11, 1920 (050E)<sup>h</sup> 21 00 +15

21 00 +15 July 14 1920

MF 6680 C<sub>11</sub>MF 6307 C<sub>11</sub>

(1 27W)

+09

+13

1	3.8		4.1	6.81	
2	3.9		4.0	7.08	
3	4.6	4.5 think varies over these must be a var. as they are quite dry on MC 35 <sup>th</sup> there	5.0	7.70	
4	4.3		4.7	7.97	
5	5.0		5.4	8.40	
6	5.1		5.5	8.56	
7	5.2		5.9	8.95	
8	4.8	Corr may	5.0	9.17	9.30
9	5.1	9.26	5.9	9.51	9.64
10	5.4	9.60	6.0	9.62	9.75
13	5.9	9.71	6.2	10.02	10.15
11	6.0	10.11	6.5	10.04	10.17
12	6.1	10.13	6.4	10.05	10.18
14	6.1	10.14	6.6	10.18	10.31
15	6.9	10.27	7.1	10.62	10.75
16	7.5	10.71	7.7	10.93	11.06
18	7.9	11.02	7.8	11.20	11.33
17	7.8	11.29	7.8	11.26	11.39
19	8.0	11.35	8.0	11.56	11.69
20	8.1	11.65	8.1	11.63	11.76
21	8.2	11.72	8.2	12.10	12.23
23	8.8	12.19	8.7	12.10	12.23
22	8.8	12.19	8.7	12.13	12.26
24	9.0	12.22	9.0	12.64	12.77
25	9.2	12.73	9.1	12.82	12.95
26	9.7	12.91	9.5	13.15	13.28
27		13.24		13.40	13.53
28	3.5	13.49			
29			7.5		
30					
31					
32					



0 21 W

40% sub spanner = 5.2 of 101 spanner July 14, 1920

500

6.0

19 h

+15.0

MF 6301 D<sub>11</sub> July 14, 1920 MF 6296 C<sub>10</sub>

1 24 W

+13

1	4.2	705	(+0)	1	4.2	6.84	
3	?	738		3	4.4	7.36	
2	5.0	744		2	4.8	7.43	
4	?	758		4	4.9	7.49	
5	5.0	767		7	5.2	8.38	
6	?	769		5	5.3	8.53	
8	5.1	781		6	5.5	8.61	
7	5.3	791		8	5.0	9.25	9.38
9	5.5	835		9	5.5	9.57	9.70
10	5.5	848		10	6.0	9.87	10.00
11	5.7	855		11	6.7	10.25	10.38
12	4.9	890	8.91	12	7.2	10.71	10.84
13	4.9	928	9.29	13	7.5	10.96	11.09
14	5.8	958	9.59	14	7.8	11.25	11.38
15	6.1	10.01	10.02	15	7.9	11.41	11.54
16	6.1	10.02	10.03	16	8.0	11.76	11.89
17	6.5	10.25	10.26	17	8.2	12.14	12.27
18	6.8	10.42	10.43	18	8.9	12.59	12.72
19	7.0	10.43	10.44	22.2		12.75	12.88
20	7.0	10.57	10.58	19	9.4	12.99	13.12
24	7.2	10.61	10.62	20	9.5	13.12	13.25
22	7.1	10.62	10.63	22.8			
21	7.1	10.66	10.67	21			
23	7.5	10.74	10.75	22			
25	7.9	11.36	11.37	23			
26	8.0	11.47	11.48	24			
27	8.1	11.66	11.67	25			
28	8.5	11.74	11.75	26			
29	8.8	12.09	12.10	27			
30	8.9	12.57	12.58	28			
31	9.4	12.91	12.92	29			
32	9.3	12.99	13.00	30			
33	9.4	13.06	13.07	31			
34	9.4	13.40	13.41	32			
35	9.5	13.79	13.80	33			



July 21, 1920, 9<sup>h</sup> +15W MT 6396 C<sub>10</sub> (0.20 W)

(108)

July 21, 1920 21 00<sup>h</sup> +15MT 6407 C<sub>11</sub> (0.29 W)

(109)

1	4.5		1	4.5	6.81	
3	4.6		2	4.6	7.08	
2	4.9		3	5.1	7.70	
4	5.0		4	5.0	7.97	
7	5.3		5	5.7	8.40	
5	5.7		6	4.8	8.56	8.65
6	5.7	Cornmag	7	5.2	8.95	9.04
8	5.8	933	8	5.7	9.17	9.26
9	6.0	965	9	6.0	9.51	9.60
10	6.5	995	10	6.2	9.62	9.71
11	7.0	10.33	13	6.9	10.02	10.11
12	7.7	10.79	11	6.9	10.04	10.13
13	7.9	11.04	12	6.9	10.05	10.14
14	8.0	11.33	14	7.0	10.18	10.27
15	8.0	11.49	15	7.3	10.62	10.71
16	8.1	11.84	16	7.9	10.93	11.02
17	8.2	12.22	18	7.9	11.20	11.29
18	9.0	12.67	17	8.0	11.26	11.35
22a		12.83	19	8.1	11.56	11.65
19	9.3	13.07	20	8.2	11.63	11.72
20	9.5	13.20	21	8.2	12.10	12.19
22b			23	9.0	12.10	12.19
21			22	8.9	12.13	12.22
22			24	9.1	12.64	12.73
23			25	9.2	12.82	12.91
24			26	9.4	13.15	13.24
25			27		13.40	
26			28			
27						
28						
29						
30						
31						
32						



MF 6400 0 11 W. 20<sup>h</sup> - 45 (406)

July 21, 1920

4	4.7	7.48	
2	5.0	7.71	
1	5.1	7.75	
3	5.2	7.91	
7	4.9	7.91	
5	5.1	8.21	
9	4.5	8.55	8.61
8	4.5	8.56	8.62
6	4.9	8.77	8.83
11	4.9	8.91	8.97
12	5.0	9.11	9.17
13	5.0	9.12	9.18
14	5.5	9.55	9.61
16	5.7	9.60	9.66
15	6.0	9.78	9.84
17	6.2	10.01	10.07
18	6.8	10.16	10.22
19	7.1	10.63	10.69
20	7.2	10.67	10.73
21	7.5	10.85	10.91
22	7.8	11.12	11.18
23	8.0	11.49	11.55
24	8.1	11.63	11.69
25	8.8	11.87	11.93
26	8.9	12.29	12.35
27	9.0	12.41	12.47
28	—	12.45	12.51
29	9.1	12.64	12.70
30	9.2	12.83	12.89



3rd reg for U series  
transferred from  
the one worked on  
AX 2045



U series

MF 6400 E<sub>p</sub> count

31	9.3	12.92	12.98
32	9.4	13.07	
33		13.29	13.35



