

KG
11365
407

1874 April
18.
1874 Nov 3

K611365.407



Record of
C. S. Peirce's
Photometric Observations.

Vol. 18

Duplicate.

KG 11365.407



(1874phae.proj..408p)

KG 11365.407

1874

Monday, April 13th 1874 (continued)

Groups XV & XVI

35 Lyncis -
Cap 0. Pinhole 5.

+ 31.6	1.59
+ 148.0	1.57
- 149.7	1.69
- 36.8	1.26
	<hr/> 1.53

10 Ursae Majoris. **

Cap 0. Pinhole 5.

+ 61.9	0.31
+ 126.9	0.55
†† - 132.6	45 0.76
- 71.2	0.14
	<hr/> 0.44
	145 0.36

36 Lyncis.

Cap 0. Pinhole 5.

+ 26.0	2.03
+ 151.6 - - - - -	1.83
# 159.4 - - - - -	2.58
2 158.9 - - - - -	2.52
	<hr/> 1.85

F. 44

Cap o. Pinhole 5.

+ 49.4

0.68

+ 141.8

1.19

- 138.2

1.00

- 47.8

0.74

0.90

Notes on Monday, April 13th. 1874.

Groups XV & XVI.

* P. VII. 156 is the S. f. of two.

† 25 Lyncis is S. of 26.

** 10 Ursae Majoris is bluish. Judging by the naked eye 10 Ursae Majoris is considerably brighter than 31 Lyncis.

†† This measure was with pinhole 4, by accident.

Thursday, April 30th 1874

Groups XVI & XVII.

c Ursae Majoris.

Cap 2. Pinhole 5.

+ 27.7	1.89
+ 146.6	1.47
- 146.7	1.48
	<hr/> 1.51

k Ursae Majoris.

Cap 2. Pinhole 5.

+ 22.7	2.35
+ 153.1	1.96
- 158.5	2.48
	<hr/> 2.26

n. of c & k *

Cap 0. Pinhole 5.

+ 20.6	2.58
+ 158.6	2.49
- 156.3	2.25
	<hr/> 2.44

P. IX. 19[†]

Cap 0. Pinhole 5

+ 15.2

3.30

+ 160.0

2.65

- 159.1

2.54

2.83

P. VIII. 202^{**}

Cap 0. Pinhole 5.

+ 19.9

2.66

+ 157.7

2.39

- 154.3

2.06

2.37

34 Lynceis.

Cap 0. Pinhole 5.

+ 23.5

2.27

+ 153.9

2.21

- 153.2

1.96

2.15

31 Lyncis
Capo Pinhole 5
alb

$$\begin{array}{r}
 +38.4 \\
 +139.4 \\
 43 \quad -131.6 \\
 \hline
 0.72 \\
 0.98
 \end{array}
 \begin{array}{r}
 1.17 \\
 1.06 \\
 \hline
 0.98
 \end{array}$$

35 Lyncis
Capo Pinhole 5

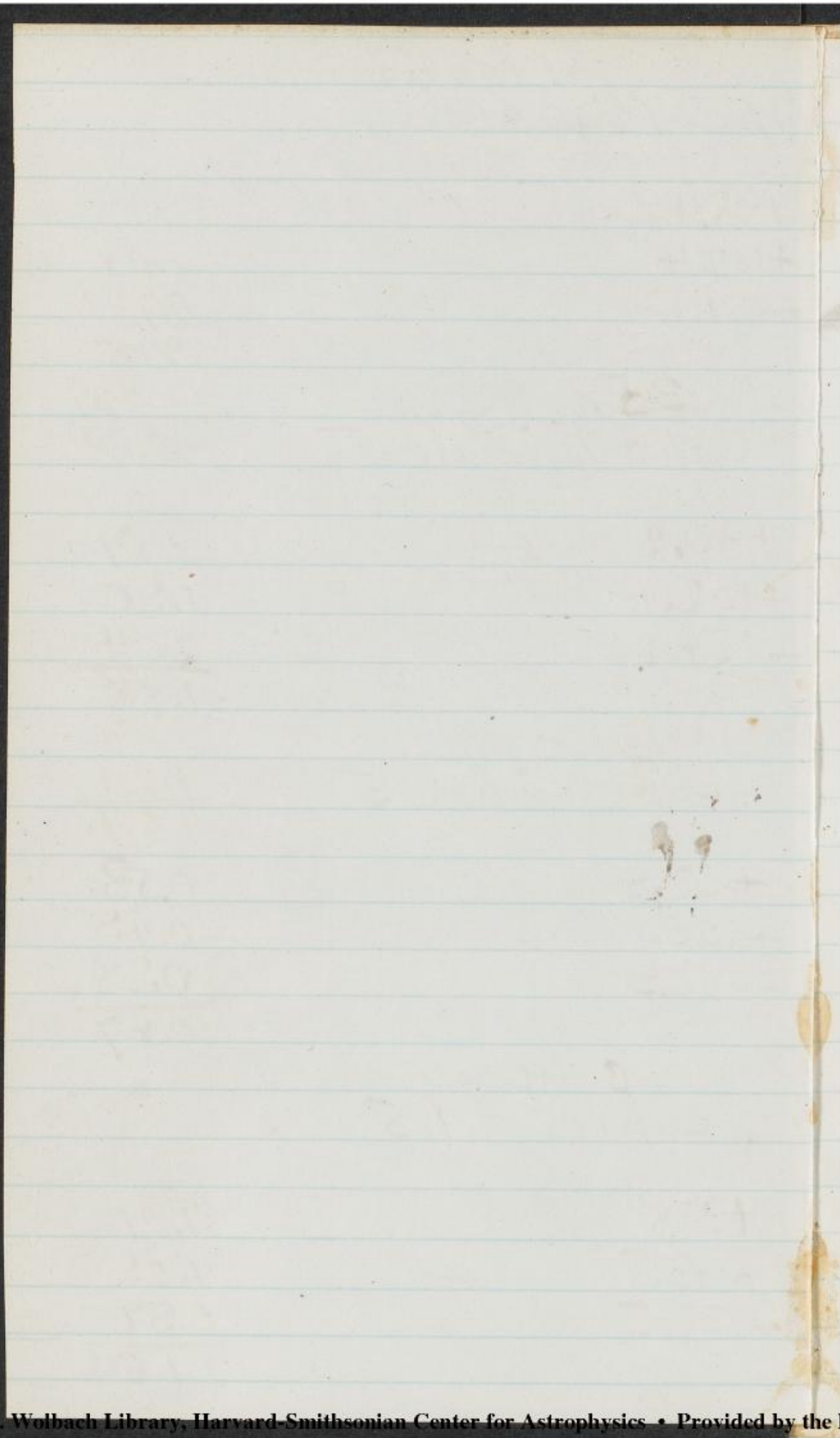
$$\begin{array}{r}
 +30.2 \\
 +152.4 \\
 -154.1 \\
 \hline
 2.04 \\
 1.88
 \end{array}
 \begin{array}{r}
 1.69 \\
 1.90 \\
 \hline
 1.88
 \end{array}$$

10 Mr. maj.
Capo Pinhole 5

$$\begin{array}{r}
 +53.9 \\
 +125.1 \\
 -120.9 \\
 \hline
 0.38 \\
 0.47
 \end{array}
 \begin{array}{r}
 0.53 \\
 0.48 \\
 \hline
 0.47
 \end{array}$$

10 Mr. maj.
Capo Pinhole 5

$$\begin{array}{r}
 +37.8 \\
 +143.6 \\
 -137.5 \\
 \hline
 0.97 \\
 1.16
 \end{array}
 \begin{array}{r}
 1.21 \\
 1.29 \\
 \hline
 1.16
 \end{array}$$



10 Mrs. mag.
Cap 2 Pinhole 5

+22.8	2.34
+156.5	2.27
-158.5	<u>2.48</u>
	2.36

Det. 10 Mrs. mag. + 38 Lynceis
Cap 0 Pinhole 5

+33.4	1.47
+144.2	1.32
-142.3	<u>1.24</u>
	1.34

36 Lynceis.

Cap 0. Pinhole 5.

+ 24.8	2.14
+ 157.2	2.34
- 157.8	2.40
	<hr/> 2.30

Notes on Thursday, April 30th. 1874.

Groups XVI & XVII

* This makes an equal Triangle with c & k .

P. ix. 19 is the following of two.

P. viii. 202 is the middle one of three, rather distant.

J
2

Saturday, May 2^d 1874.

Groups XI & XXXI.

Very clear; stars very low.

π Aurigae.*

alt. 7 Cap o. Pinhole 5.

35

+ 65.9

0.22

+ 56.0

0.46

+ 53.2

0.55

0.41

56 Aurigae.

Line
8^h 25

Cap o. Pinhole 5.

+ 24.1

2.21

41 Aurigae.

Cap o. Pinhole 5.

+ 22.9

2.33

2.66

P. V. 280

Cap o. Pinhole 5.
+ 16.8

3.06

o Aurigae.

Cap o. Pinhole 5.
+ 22.9
25.7
24.0

2.33

2.06

2.22

2.20

o Bootae.

Cap o. Pinhole 5.
+ 45.0

0.85

1874phae.pro...408P
 ϵ Bootae.

Cap 0. Pinhole 5.
+ 23.4

2.28

κ Bootae.

Cap 0. Pinhole 5.
+ 35.0

1.37

13 Bootae.

Cap 0. Pinhole 5.
+ 15.4

3.27

Between 13 & 2

Cap 0. Pinhole 5.
+ 28.1

1.86

2 Bootae.

Cap 0. Pinhole 5.
+ 43.3

0.93

9 H. Bootae.

Cap 0. Pinhole 5.
+ 26.9

1.96

1874phae.proj...408P

P. XIII 289⁺

Cap 0. Pinhole 5.
+ 14.6

3.40

Notes on Saturday, May 2^d 1874
Groups XI + XXXI.

* To the unassisted eye π Aurigae
does not appear brighter than θ Bootae.

+ P. XIII. 289 is the v. of a large triangle.

J
8

Saturday, May 2^d 1874

Groups XIV & XVI.

Recorder had difficulty in hearing.
 $\psi 7$ Aurigae.

Time Alt. 7 Cap 0. Pinhole 5.
 $8^h 54^m 37$ + 28.3

1.84

$\psi 5$ Aurigae.

Cap 0. Pinhole 5.
 + 29.1

1.78

$\psi 4$ Aurigae.

Cap 0. Pinhole 5.
 + 32.5

1.53

64 Aurigae.

alt. 7 Cap 0. Pinhole 5
 40 + 18.5

2.83

66 Aurigae.

alt. 7 Cap 0. Pinhole 5.
 41 + 25.0

2.12

31 Lynceis. *

Cap 0. Pinhole 5.
 + 45.1

0.85

10 Ursae Majoris.

Cap 0. Pinhole 5.
+ 41.6

1.01

35 Lynceis.

Cap 0. - Pinhole 5.
+ 29.6

1.74

36 Lynceis.

Cap 0. Pinhole 5.
+ 31.1

1.63

F. 44

Cap o. Pinhole 5.
+ 34.9

1.38

Note.

* 31 Lyneis is reddish.

Saturday May 2^d. 1874

Groups. XVII & XVIII.

ε Ursae Majoris.

Cap 2. Pinhole 5.

+ 33.2

1.49

+ 148.1

1.57

- 144.9

1.36

- 39.5

1.12

1.38

κ Ursae Majoris.

Cap 2. Pinhole 5.

+ 24.3

2.19

+ 153.1

1.96

- 150.9

1.78

- 37.2

1.24

1.79

ε Ursae Majoris

Cap 0. Pinhole 3

+ 42.6

0.96

+ 140.5

1.12

- 133.0

0.77

- 58.0

0.41

0.85

κ Ursae Majoris.

Cap 0. Pinhole 3.

+ 30.7	1.66
+ 143.8	1.30
- 143.1	1.26
- 37.7	1.21
	<hr/> 1.36

P. VIII 202 *

Cap 0. Pinhole 5

+ 23.4	2.28
+ 153.9	2.03
- 151.8	1.85
- 29.2	1.77
	<hr/> 1.98

34 Lynceis.

Cap 0. Pinhole 5.

+ 27.7	1.89
+ 148.5	1.60
+ 151.4	1.82
- 147.2	1.51
- 35.5	1.34
	<hr/> 1.58

n. f. v & k.

Cap 0. Pinhole 5.

$$\begin{array}{r} + 27.5 \\ + 152.9 \\ - 157.1 \\ - 27.6 \\ \hline 1.91 \\ 1.94 \\ 1.79 \\ 1.90 \\ \hline 1.88 \end{array}$$

P. IX. 19. **

Cap 0. Pinhole 5.

$$\begin{array}{r} + 19.9 \\ + 160.3 \\ - 158.3 \\ - 23.4 \\ \hline 2.66 \\ 2.68 \\ 2.45 \\ 2.28 \\ \hline 2.52 \end{array}$$

38 Lynx.

Cap 0. Pinhole 5.

$$\begin{array}{r} + 56.3 \\ + 115.5 \\ - 96.7 \\ - 91.6 \\ \hline 0.45 \\ 0.25 \\ 0.02 \\ 0.00 \\ \hline 0.18 \end{array}$$

38 Lyncis.

Cap 1. Pinhole 5.

+ 45.5	0.83
+ 136.8	0.93
- 126.0	0.52
- 51.9	0.59
	<hr/> 0.72

P. IX. 115.

Cap 1. Pinhole 5.

+ 24.6	2.16
Cap 0 + 146.3	1.45
- 144.1	1.32
- 45.5	0.83
	<hr/> 1.44

42 Lyncis.

Cap 1. Pinhole 5.

+ 22.6	2.36
Cap 0 + 152.9	1.94
- 150.5	1.75
- 32.0	1.57
	<hr/> 1.90

43 Lynx.

Cap 1. Pinhole 5.

+ 20.1

2.63

Cap 0 + 156.3

2.25

- 154.9

2.12

- 24.9

2.13

2.28

19 Leonis Minoris.

Cap 1. Pinhole 5.

+ 21.3

2.50

Cap 0. + 148.5

1.60

- 148.6

1.61

- 36.5

1.28

1.75

Notes on Saturday May 2. 1874.

Groups XVII & XVIII.

With no caps the Phot. Star is
extinguished at $+7.8^{\text{m}}$ ^{4.93} With caps 2 the
Phot. Star is extinguished at $+5.1 = 5.9^{\text{m}}$

* P. VIII. 202 is the middle one of three.

+ Observed accidentally, being 35 Lynceis. not
34

** P. IX. 19 is the p. one of two.

38 Lynceis appears to the naked eye
about $3/10^{\text{m}}$ fainter than μ Urs. maj.

8
8
8

Sunday, May 3^d 1874.

Groups XI & XXXI.

Began in the twilight.

π Aurigae.

Line Cap o. Pinhole 5.
8^h 14^m * + 57.0

0.62

+ 143.5

1.28

8 14

- 130.6

0.68

0.86

36 Aurigae.

Cap o. Pinhole 5.

+ 20.6

2.58

+ 162.7

2.99

- 154.7

2.10

2.56

41 Aurigae.

Cap o. Pinhole 5.

+ 21.3

2.50

+ 160.9

2.76

- 158.2

2.44

2.57

P. V. 280

Cap 0. Pinhole 5.

+ 18.7

2.81

+ 163.6

3.12

- 160.3

2.68

2.87

O Aurigae.

Cap 0. Pinhole 5.

+ 22.8

2.34

+ 157.4

2.36

2.35

O Bootae.

Cap 0. Pinhole 5.

+ 50.1

0.65

+ 134.0

0.81

- 132.8

0.76

0.74

ι Bootae.

Cap o. Pinhole 5.

+ 27.6

1.90

+ 157.5

1.82

- 157.8

1.85

1.86

κ Bootae.

Cap o. Pinhole 5.

+ 35.4

1.35

+ 148.4

1.59

- 139.7

1.69

1.54

Comp. ι Bootae.

Cap o. Pinhole 5.

+ 15.9

3.19

+ 163.1

3.05

- 161.9

2.88

3.04

Neis 22⁺

Cap 0. Pinhole 5.

+ 16.3

3.13

+ 165.3

3.38

- 164.5

3.25

3.25

13 Bootae.

Cap 0. Pinhole 5.

+ 23.8

2.24

+ 154.1

2.04

- 156.6

2.28

2.17

λ Bootae.

Cap 0. Pinhole 5.

+ 44.9

0.85

+ 138.9

1.02

- 135.0

0.85

0.91

9 H. Bootae.

Cap o. Pinhole 5.

+ 23.4

2.28

+ 157.9

2.41

- 162.1

2.91

2.53

Notes on Sunday, May 3^d 1874 -
Groups XI & XXXI.

* Made it as faint as possible;
possibly too faint.

+ This star was observed last
night for 13.

All the observations on Gr. 11
were made before those on
Gr. 31 were commenced.

clouds suspected in the neighbor-
hood of Gr. 31.

Sunday, May 3^d. 1874.
Groups XVII & XIX.

h. m. Moon not being up, observed
8.41 The extinction of Star, No cap + 5.3 5.87
Notwithstanding these do + 4.4 6.33
measures the field is Cap 2 + 4.3 6.10
much brighter with no cap. do + 5.3 5.87
6.07

Ursae Majoris.

Cap 0. Pinhole 3.

+ 34.3	1.41
+ 141.3	1.16
- 145.4	7.40
- 48.3	0.72
	<hr/> 1.17

Ursae Majoris.

Cap 0. Pinhole 3.

+ 32.3	1.55
+ 151.3	1.81
- 151.3	1.81
- 37.4	1.23
	<hr/> 1.60

i Ursae Majoris.

Cap 2 Pinhole 5.

$$\begin{array}{r} + 23.1 \\ + 154.1 \\ - 153.3 \\ - 31.6 \\ \hline 2.31 \\ 2.04 \\ 1.97 \\ 1.59 \\ \hline 1.98 \end{array}$$

k Ursae Majoris.

Cap 2. Pinhole 5.

$$\begin{array}{r} + 20.8 \\ + 157.5 \\ - 157.9 \\ - 21.5 \\ \hline 2.55 \\ 2.37 \\ 2.41 \\ 2.48 \\ \hline 2.45 \end{array}$$

Neis.

n. of i & k

Cap 0. Pinhole 5.

$$\begin{array}{r} + 24.4 \\ + 154.8 \\ - 155.1 \\ - 30.5 \\ \hline 2.18 \\ 2.11 \\ 2.13 \\ 1.67 \\ \hline 2.02 \end{array}$$

P. VIII. 202

Cap 0. Pinhole 5.

$$\begin{array}{r}
 + 18.0 \quad 2.90 \\
 + 159.8 \quad 2.62 \\
 - 158.2 \quad 2.44 \\
 - 25.6 \quad \underline{2.07} \\
 \quad 2,51 \quad 4
 \end{array}$$

34 Lycis.

Cap 0. Pinhole 5.

$$\begin{array}{r}
 + 22.7 \quad \text{---} \quad 2.35 \\
 + 157.8 \quad \text{---} \quad 2.40 \\
 \left\{ \begin{array}{l} - 151.1 \quad \text{---} \quad 1.79 \\ - 155.9 \quad \text{---} \quad 2.21 \\ - 153.6 \quad \text{---} \quad 2.00 \\ - 155.3 \quad \text{---} \quad 2.15 \end{array} \right. \\
 \left(\begin{array}{l} - 29.4 \quad \text{---} \quad 1.75 \\ - 28.5 \quad \text{---} \quad 1.82 \end{array} \right) \\
 \quad \underline{2.03} \quad 9 \\
 2.14
 \end{array}$$

P. IX 19.

Cap 0. Pinhole 5.

$$\begin{array}{r}
 + 15.7 \quad 3.22 \\
 * + 167.6 \quad 2.84 \\
 - 161.8 \quad 2.87 \\
 - 22.2 \quad \underline{2.40} \\
 \quad 2.83
 \end{array}$$

20.0
22.8
24.8
20.2
22.8

20.8
22.8
24.8
20.2
22.8

22.8
24.8
20.2
22.8
24.8

22 H. Ursae Maj.

Time Cap 0. Pinhole 5.
8h 59^m

+ 24.0

2.22 -

+ 155.4

2.16

- 157.7

2.39 3.

- 27.2

1.93 5

2.17 4

5 Ursae Majoris.

Cap 0. Pinhole 3

+ 36.1

1.30

+ 145.4

1.40 7

- 140.3

1.11 +

- 43.0

0.94 +
1.19 9

5 Ursae Maj.

Cap 2. Pinhole 5

+ 25.1

2.12

+ 155.1

2.13

- 154.8*

2.11

- 31.5

1.50

1.19

Comp I Ursae Maj.

Leap 0. Pinhole 5.

+ 32.2	1.55
+ 142.3	1.21
- 142.6	1.23.
- 42.6	0.96
	<hr/> 1.24

31 Ursae Maj. †

Leap 0. Pinhole 5.

+ 19.0	2.77
+ 157.5	2.37
- 157.2	2.34
- 25.4	2.09
	<hr/> 2.39

P. IX. 169

True Leap 0. Pinhole 5.

+ 24.1	2.21
+ 152.9	1.94
- 149.7	1.69
- 36.7	1.27
	<hr/> 1.75

9^h 45^m

Notes on Sunday, May 3^d 1874
Groups XVII & XIX.

* At this observation the lamps
commenced making a noise.

+ 31 Ursae Majoris is the s.p.
of two.

is the n. one of a triangle.

